

For Research Use Only

# PSMA7 Polyclonal antibody

Catalog Number: 15219-1-AP

Featured Product

11 Publications



## Basic Information

### Catalog Number:

15219-1-AP

### Size:

450 ug/ml

### Source:

Rabbit

### Isotype:

IgG

### Immunogen Catalog Number:

AG7389

### GenBank Accession Number:

BC004427

### GeneID (NCBI):

5688

### UNIPROT ID:

O14818

### Full Name:

proteasome (prosome, macropain)  
subunit, alpha type, 7

### Calculated MW:

28 kDa

### Observed MW:

28-30 kDa

### Purification Method:

Antigen affinity purification

### Recommended Dilutions:

WB 1:3000-1:15000

IP 0.5-4.0 ug for 1.0-3.0 mg of total  
protein lysate

IHC 1:200-1:1000

IF/ICC 1:200-1:800

## Applications

### Tested Applications:

WB, IHC, IF/ICC, IP, ELISA

### Cited Applications:

WB

### Species Specificity:

human, mouse, rat

### Cited Species:

human, mouse, rat

**Note-IHC: suggested antigen retrieval with  
TE buffer pH 9.0; (\*) Alternatively, antigen  
retrieval may be performed with citrate  
buffer pH 6.0**

### Positive Controls:

WB : HepG2 cells, HeLa cells

IP : mouse brain tissue,

IHC : human liver cancer tissue,

IF/ICC : HeLa cells,

## Background Information

PSMA7(Proteasome subunit alpha type-7) is also named HSPC and belongs to the peptidase T1A family. It is an  $\alpha$ -type subunit of the 20S proteasome core complex and participates in degrading proteins through the ubiquitin-proteasome pathway (UPP) which plays an important role in the regulation of cell proliferation or cell cycle control, transcriptional regulation, immune and stress response, cell differentiation, and apoptosis(PMID: 19442227).

## Notable Publications

Author	Pubmed ID	Journal	Application
Jordan J S VerPlank	29076578	Glia	WB
Han Wu	32450067	Exp Cell Res	WB
Yang Liuzhong L	23839082	Cell Physiol Biochem	WB

## Storage

### Storage:

Store at -20°C. Stable for one year after shipment.

### Storage Buffer:

PBS with 0.02% sodium azide and 50% glycerol pH 7.3.

Aliquoting is unnecessary for -20°C storage

For technical support and original validation data for this product please contact:

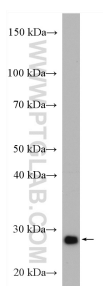
T: 4006900926

E: [Proteintech-CN@ptglab.com](mailto:Proteintech-CN@ptglab.com)

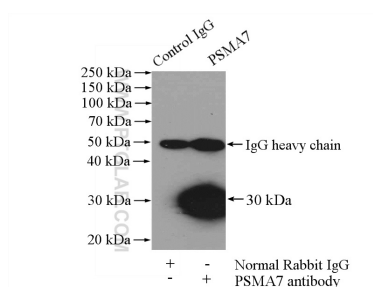
W: [ptgcn.com](http://ptgcn.com)

**This product is exclusively available under Proteintech Group brand and is not available to purchase from any other manufacturer.**

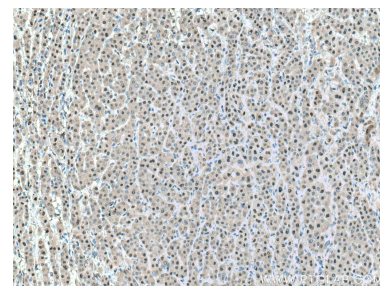
## Selected Validation Data



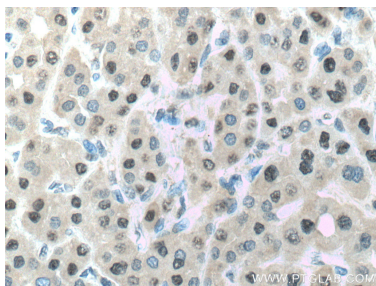
HepG2 cells were subjected to SDS PAGE followed by western blot with 15219-1-AP (PSMA7 antibody) at dilution of 1:8000 incubated at room temperature for 1.5 hours.



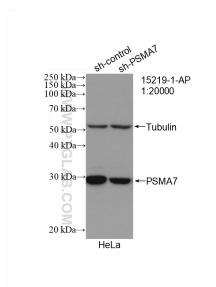
IP result of anti-PSMA7 (IP:15219-1-AP, 4ug; Detection:15219-1-AP 1:500) with mouse brain tissue lysate 4000ug.



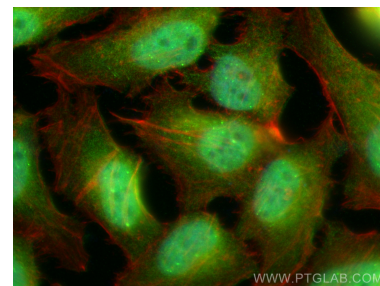
Immunohistochemical analysis of paraffin-embedded human liver cancer tissue slide using 15219-1-AP (PSMA7 antibody) at dilution of 1:1000 (under 10x lens. Heat mediated antigen retrieval with Tris-EDTA buffer (pH 9.0).



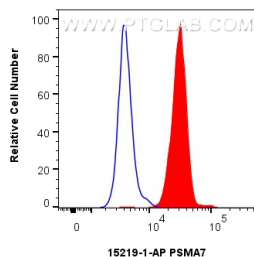
Immunohistochemical analysis of paraffin-embedded human liver cancer tissue slide using 15219-1-AP (PSMA7 antibody) at dilution of 1:1000 (under 40x lens. Heat mediated antigen retrieval with Tris-EDTA buffer (pH 9.0).



WB result of PSMA7 antibody (15219-1-AP; 1:20000; incubated at room temperature for 1.5 hours) with sh-Control and sh-PSMA7 transfected HeLa cells.



Immunofluorescent analysis of (4% PFA) fixed HeLa cells using PSMA7 antibody (15219-1-AP) at dilution of 1:400 and CoraLite@488-Conjugated Goat Anti-Rabbit IgG(H+L) (SA00013-2), CL594-phalloidin (red).



1x10<sup>6</sup> HepG2 cells were intracellularly stained with 0.25 ug PSMA7 Polyclonal antibody (15219-1-AP) and CoraLite@488-Conjugated Goat Anti-Rabbit IgG(H+L) (SA00013-2)(red), or 0.25 ug Rabbit IgG control Rabbit PolyAb (30000-0-AP) (blue). Cells were fixed with 4% PFA and permeabilized with Flow Cytometry Perm Buffer (PF00011-C).