

## CRACR2A Polyclonal antibody

Catalog Number: 15206-1-AP

Featured Product

6 Publications

## Basic Information

## Catalog Number:

15206-1-AP

## Size:

700 µg/ml

## Source:

Rabbit

## Isotype:

IgG

## Immunogen Catalog Number:

AG7358

## GenBank Accession Number:

BC004524

## GeneID (NCBI):

84766

## UNIPROT ID:

Q9BSW2

## Full Name:

EF-hand calcium binding domain 4B

## Calculated MW:

46 kDa

## Observed MW:

46 kDa, 80-90 kDa

## Purification Method:

Antigen affinity purification

## Recommended Dilutions:

WB 1:500-1:1000

IP 0.5-4.0 µg for 1.0-3.0 mg of total protein lysate

IHC 1:200-1:800

IF/ICC 1:50-1:500

## Applications

## Tested Applications:

WB, IHC, IF/ICC, IP, ELISA

## Cited Applications:

WB, IP, IF

## Species Specificity:

human

## Cited Species:

human, mouse

**Note-IHC: suggested antigen retrieval with TE buffer pH 9.0; (\*) Alternatively, antigen retrieval may be performed with citrate buffer pH 6.0**

## Positive Controls:

WB : Jurkat cells, HeLa cells, Daudi cells

IP : Jurkat cells,

IHC : human tonsillitis tissue,

IF/ICC : HEK-293 cells,

## Background Information

CRACR2A (also called CRAC regulator 2A, EFCAB4B) is a cytoplasmic Ca<sup>2+</sup> sensor predominantly expressed in lymphocytes. It has two isoforms: a long isoform of CRACR2A-a around 80-90 kDa and a short isoform of CRACR2A-c around 46 kDa. CRACR2A-c is involved in the regulation of Ca<sup>2+</sup>-NFAT signaling. CRACR2A-a exists in a GTP- and Golgi membrane-bound form in resting T cells, while it is present in subsynaptic vesicles that translocated from the Golgi region to the immunological synapse after ligation of TCRs. This antibody recognizes both of CRACR2A-c and CRACR2A-a.

## Notable Publications

| Author            | Pubmed ID | Journal     | Application |
|-------------------|-----------|-------------|-------------|
| Katarina T Miteva | 31092558  | J Cell Biol | WB, IF      |
| Jin Seok Woo      | 29987160  | J Immunol   | WB          |
| Lucia Pedicini    | 33603063  | Sci Rep     | IP, IF, WB  |

## Storage

## Storage:

Store at -20°C. Stable for one year after shipment.

## Storage Buffer:

PBS with 0.02% sodium azide and 50% glycerol pH 7.3.

Aliquoting is unnecessary for -20°C storage

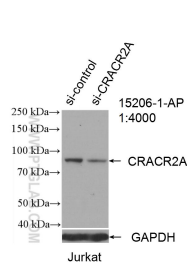
For technical support and original validation data for this product please contact:

T: 4006900926

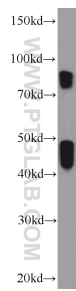
E: [Proteintech-CN@ptglab.com](mailto:Proteintech-CN@ptglab.com)W: [ptgcn.com](http://ptgcn.com)

This product is exclusively available under Proteintech Group brand and is not available to purchase from any other manufacturer.

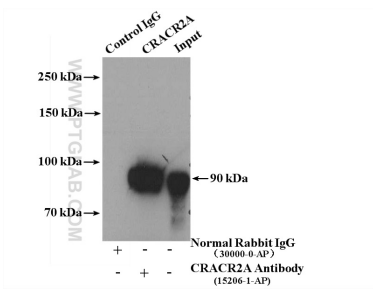
Selected Validation Data



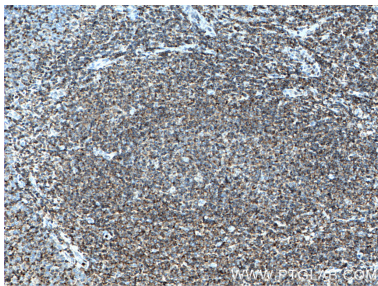
WB result of CRACR2A antibody (15206-1-AP; 1:4000; incubated at room temperature for 1.5 hours) with sh-Control and sh-CRACR2A transfected Jurkat cells.



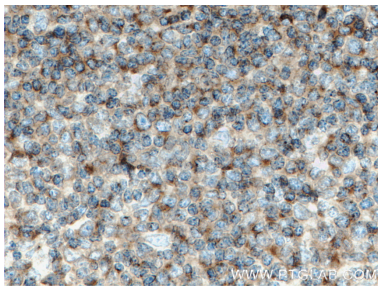
Jurkat cells were subjected to SDS PAGE followed by western blot with 15206-1-AP (CRACR2A) antibody at dilution of 1:600 incubated at room temperature for 1.5 hours.



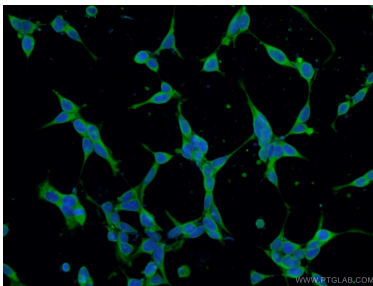
IP result of anti-CRACR2A (IP:15206-1-AP, 4ug; Detection:15206-1-AP 1:500) with Jurkat cells lysate 3200ug.



Immunohistochemical analysis of paraffin-embedded human tonsillitis tissue slide using 15206-1-AP (CRACR2A antibody) at dilution of 1:400 (under 10x lens. Heat mediated antigen retrieval with Tris-EDTA buffer (pH 9.0).



Immunohistochemical analysis of paraffin-embedded human tonsillitis tissue slide using 15206-1-AP (CRACR2A antibody) at dilution of 1:400 (under 40x lens. Heat mediated antigen retrieval with Tris-EDTA buffer (pH 9.0).



Immunofluorescent analysis of (-20°C Ethanol) fixed HEK-293 cells using 15206-1-AP (CRACR2A antibody) at dilution of 1:50 and Alexa Fluor 488-Conjugated AffiniPure Goat Anti-Rabbit IgG(H+L).