

For Research Use Only

RBPMS Polyclonal antibody

Catalog Number: 15187-1-AP

Featured Product

33 Publications



Basic Information

Catalog Number:

15187-1-AP

Concentration:

600 ug/ml

Source:

Rabbit

Isotype:

IgG

Immunogen Catalog Number:

AG7256

GenBank Accession Number:

BC003608

GeneID (NCBI):

11030

UNIPROT ID:

Q93062

Full Name:

RNA binding protein with multiple splicing

Calculated MW:

22 kDa

Observed MW:

28-30 kDa

Purification Method:

Antigen affinity purification

Recommended Dilutions:

WB 1:5000-1:50000

IP 0.5-4.0 ug for 1.0-3.0 mg of total protein lysate

IHC 1:20-1:200

IF-P 1:50-1:500

IF/ICC 1:50-1:500

Applications

Tested Applications:

WB, IHC, IF/ICC, IF-P, FC (Intra), IP, ELISA

Cited Applications:

WB, IHC, IF, IP, CoIP

Species Specificity:

human, mouse, rat

Cited Species:

human, mouse, rat

Note-IHC: suggested antigen retrieval with TE buffer pH 9.0; (*) Alternatively, antigen retrieval may be performed with citrate buffer pH 6.0

Positive Controls:

WB : HepG2 cells, mouse kidney tissue, mouse liver tissue, mouse colon tissue, mouse heart tissue

IP : mouse heart tissue,

IHC : human ovary tumor tissue,

IF-P : rat eye tissue,

IF/ICC : HepG2 cells,

Background Information

RBPMS is a member of the RNA recognition motif family of RNA-binding proteins. It has a single, putative RNA recognition motif in its N-terminus.

Notable Publications

Author	Pubmed ID	Journal	Application
Zong-Yi Zhan	36204863	Neural Regen Res	IHC
Pin Lyu	34788628	Cell Rep	IF
Minzhen Li	36423381	Biochem Biophys Res Commun	WB

Storage

Storage:

Store at -20°C. Stable for one year after shipment.

Storage Buffer:

PBS with 0.02% sodium azide and 50% glycerol, pH7.3

Aliquoting is unnecessary for -20°C storage

For technical support and original validation data for this product please contact:

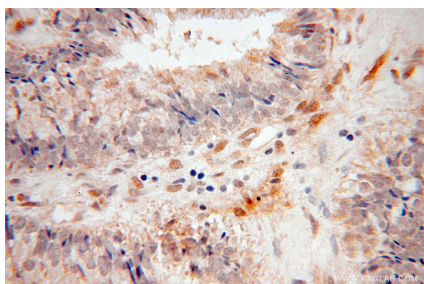
T: 4006900926

E: Proteintech-CN@ptglab.com

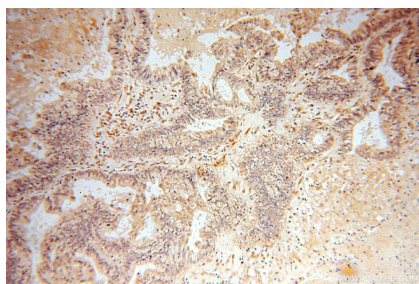
W: ptgcn.com

This product is exclusively available under Proteintech Group brand and is not available to purchase from any other manufacturer.

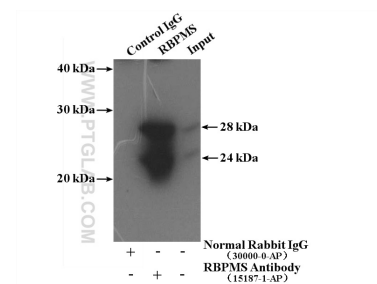
Selected Validation Data



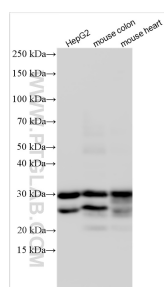
Immunohistochemical analysis of paraffin-embedded human ovary tumor using 15187-1-AP (RBPMS antibody) at dilution of 1:50 (under 40x lens).



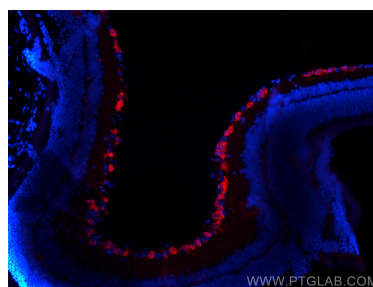
Immunohistochemical analysis of paraffin-embedded human ovary tumor using 15187-1-AP (RBPMS antibody) at dilution of 1:50 (under 10x lens).



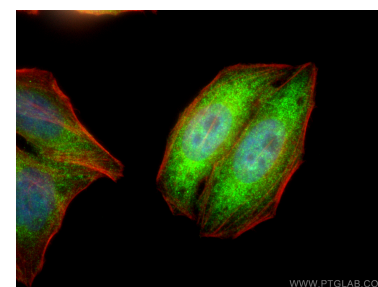
IP result of anti-RBPMS (IP:15187-1-AP, 4ug; Detection:15187-1-AP 1:400) with mouse heart tissue lysate 4000ug.



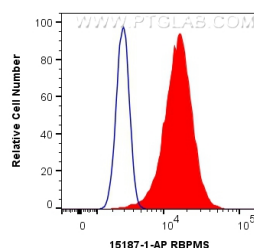
Various lysates were subjected to SDS PAGE followed by western blot with 15187-1-AP (RBPMS antibody) at dilution of 1:10000 incubated at room temperature for 1.5 hours.



Immunofluorescent analysis of (4% PFA) fixed paraffin-embedded rat eye tissue using RBPMS antibody (15187-1-AP) at dilution of 1:200 and CoraLite®594-Conjugated Goat Anti-Rabbit IgG(H+L) (SA00013-4). Heat mediated antigen retrieval with Tris-EDTA buffer (pH 9.0).



Immunofluorescent analysis of (4% PFA) fixed HepG2 cells using RBPMS antibody (15187-1-AP) at dilution of 1:200 and CoraLite®488-Conjugated AffiniPure Goat Anti-Rabbit IgG(H+L), CL594-phalloidin (red).



1X10⁶ HeLa cells were intracellularly stained with 0.4 ug Anti-Human RBPMS (15187-1-AP) (red), or 0.4 ug Isotype Control. Cells were fixed with 4% PFA and permeabilized with Flow Cytometry Perm Buffer (PF00011-C).