

For Research Use Only

NLRP2 Polyclonal antibody

Catalog Number: 15182-1-AP

Featured Product

9 Publications



Basic Information

Catalog Number:

15182-1-AP

Size:

600 µg/ml

Source:

Rabbit

Isotype:

IgG

Immunogen Catalog Number:

AG7167

GenBank Accession Number:

BC001039

GeneID (NCBI):

55655

UNIPROT ID:

Q9NX02

Full Name:

NLR family, pyrin domain containing
2

Calculated MW:

121 kDa

Observed MW:

105-110 kDa

Purification Method:

Antigen affinity purification

Recommended Dilutions:

WB 1:500-1:1000

IP 0.5-4.0 µg for 1.0-3.0 mg of total
protein lysate

IHC 1:20-1:200

Applications

Tested Applications:

IHC, IP, WB, ELISA

Cited Applications:

WB, IHC, IF

Species Specificity:

human

Cited Species:

human, mouse

**Note-IHC: suggested antigen retrieval with
TE buffer pH 9.0; (*) Alternatively, antigen
retrieval may be performed with citrate
buffer pH 6.0**

Positive Controls:

WB : A549 cells, human lung tissue

IP : A549 cells,

IHC : human placenta tissue,

Background Information

Notable Publications

Author	Pubmed ID	Journal	Application
Yanqing Yang	30183071	Eur J Immunol	WB
Shuxuan Huang	33714750	J Neuroimmunol	WB
Mengjun Zhang	34906628	Mol Cell Endocrinol	IHC

Storage

Storage:

Store at -20°C. Stable for one year after shipment.

Storage Buffer:

PBS with 0.02% sodium azide and 50% glycerol pH 7.3.

Aliquoting is unnecessary for -20°C storage

For technical support and original validation data for this product please contact:

T: 4006900926

E: Proteintech-CN@ptglab.com

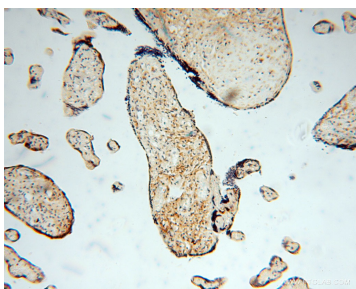
W: ptgcn.com

This product is exclusively available under Proteintech Group brand and is not available to purchase from any other manufacturer.

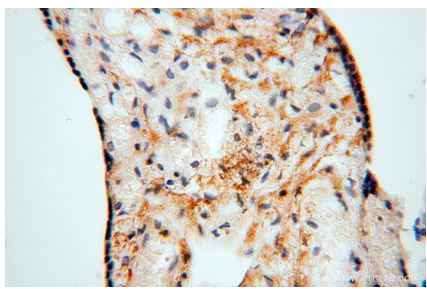
Selected Validation Data



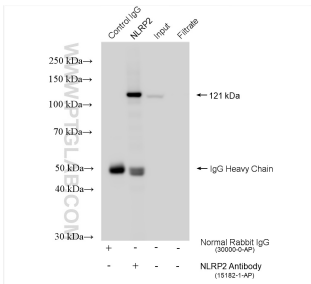
A549 cells were subjected to SDS PAGE followed by western blot with 15182-1-AP (NLRP2 antibody) at dilution of 1:500 incubated at room temperature for 1.5 hours.



Immunohistochemical analysis of paraffin-embedded human placenta using 15182-1-AP (NLRP2 antibody) at dilution of 1:50 (under 10x lens).



Immunohistochemical analysis of paraffin-embedded human placenta using 15182-1-AP (NLRP2 antibody) at dilution of 1:50 (under 40x lens).



IP result of anti-NLRP2 (IP:15182-1-AP, 4ug; Detection:15182-1-AP 1:3000) with A549 cells lysate 920 ug.