

For Research Use Only

# NDUFAF1 Polyclonal antibody

Catalog Number: 15181-1-AP 2 Publications



## Basic Information

**Catalog Number:**

15181-1-AP

**Size:**

450 µg/ml

**Source:**

Rabbit

**Isotype:**

IgG

**Immunogen Catalog Number:**

AG7162

**GenBank Accession Number:**

BC000780

**GeneID (NCBI):**

51103

**UNIPROT ID:**

Q9Y375

**Full Name:**

NADH dehydrogenase (ubiquinone) 1  
alpha subcomplex, assembly factor 1

**Calculated MW:**

38 kDa

**Observed MW:**

32 kDa

**Purification Method:**

Antigen affinity purification

**Recommended Dilutions:**

WB 1:200-1:1000

IHC 1:20-1:200

## Applications

**Tested Applications:**

IHC, WB, ELISA

**Cited Applications:**

WB

**Species Specificity:**

human, mouse, rat

**Cited Species:**

mouse

**Note-IHC: suggested antigen retrieval with TE buffer pH 9.0; (\*) Alternatively, antigen retrieval may be performed with citrate buffer pH 6.0**

**Positive Controls:**

WB : HEK-293 cells, Jurkat cells, Transfected HEK-293 cells, HeLa cells

IHC : human kidney tissue,

## Background Information

### Notable Publications

Author	Pubmed ID	Journal	Application
Wenda Xi	33691786	Stem Cell Res Ther	WB
David W Reid	28720757	Sci Rep	WB

## Storage

**Storage:**

Store at -20°C. Stable for one year after shipment.

**Storage Buffer:**

PBS with 0.02% sodium azide and 50% glycerol pH 7.3.

Aliquoting is unnecessary for -20°C storage

For technical support and original validation data for this product please contact:

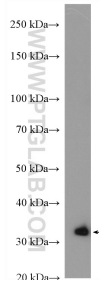
T: 4006900926

E: Proteintech-CN@ptglab.com

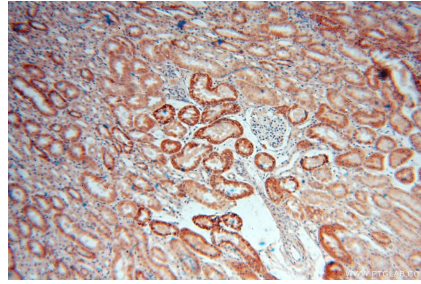
W: ptgcn.com

**This product is exclusively available under Proteintech Group brand and is not available to purchase from any other manufacturer.**

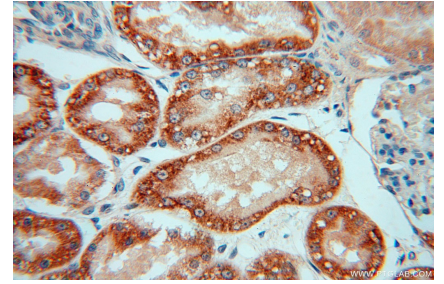
## Selected Validation Data



HEK-293 cells were subjected to SDS PAGE followed by western blot with 15181-1-AP (NDUF AF 1 antibody) at dilution of 1:300 incubated at room temperature for 1.5 hours.



Immunohistochemical analysis of paraffin-embedded human kidney using 15181-1-AP (NDUF AF 1 antibody) at dilution of 1:50 (under 10x lens).



Immunohistochemical analysis of paraffin-embedded human kidney using 15181-1-AP (NDUF AF 1 antibody) at dilution of 1:50 (under 40x lens).