

SARS Polyclonal antibody

Catalog Number: 15162-1-AP

1 Publications

Basic Information

Catalog Number:

15162-1-AP

Size:

300 µg/ml

Source:

Rabbit

Isotype:

IgG

Immunogen Catalog Number:

AG7270

GenBank Accession Number:

BC000716

GeneID (NCBI):

6301

UNIPROT ID:

P49591

Full Name:

seryl-tRNA synthetase

Calculated MW:

58 kDa

Observed MW:

58-64 kDa

Purification Method:

Antigen affinity purification

Recommended Dilutions:

WB 1:500-1:2000

IHC 1:20-1:200

IF/ICC 1:10-1:100

Applications

Tested Applications:

WB, IHC, IF/ICC, ELISA

Cited Applications:

WB

Species Specificity:

human, mouse, rat

Cited Species:

human

Note-IHC: suggested antigen retrieval with TE buffer pH 9.0; (*) Alternatively, antigen retrieval may be performed with citrate buffer pH 6.0

Positive Controls:

WB : HEK-293 cells, HeLa cells, HepG2 cells

IHC : human lung cancer tissue,

IF/ICC : HepG2 cells,

Background Information

SARS(Serine--tRNA ligase, cytoplasmic) Catalyzes the attachment of serine to tRNA(Ser). Is also probably able to aminoacylate tRNA(Sec) with serine, to form the misacylated tRNA L-seryl-tRNA(Sec), which will be further converted into selenocysteinyl-tRNA(Sec).The deduced 514-amino acid protein has a calculated molecular mass of about 59 kD.And it can form a dimer of 120kDa(PMID:2180700).It is detected a band of 65kDa in MEL cell lines(PMID:1918033).

Notable Publications

Author	Pubmed ID	Journal	Application
Ning Xu	35659036	J Hematol Oncol	WB

Storage

Storage:

Store at -20°C. Stable for one year after shipment.

Storage Buffer:

PBS with 0.02% sodium azide and 50% glycerol pH 7.3.

Aliquoting is unnecessary for -20°C storage

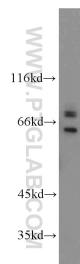
For technical support and original validation data for this product please contact:

T: 4006900926

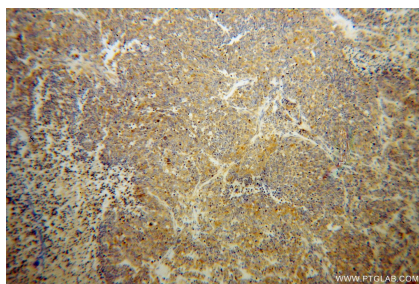
E: Proteintech-CN@ptglab.comW: ptgcn.com

This product is exclusively available under Proteintech Group brand and is not available to purchase from any other manufacturer.

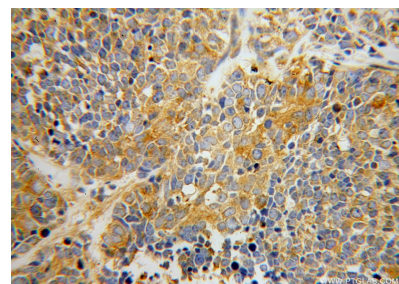
Selected Validation Data



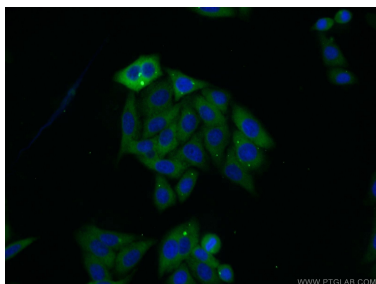
HEK-293 cells were subjected to SDS PAGE followed by western blot with 15162-1-AP (SARS antibody) at dilution of 1:1000 incubated at room temperature for 1.5 hours.



Immunohistochemical analysis of paraffin-embedded human lung cancer using 15162-1-AP (SARS antibody) at dilution of 1:100 (under 10x lens).



Immunohistochemical analysis of paraffin-embedded human lung cancer using 15162-1-AP (SARS antibody) at dilution of 1:100 (under 40x lens).



Immunofluorescent analysis of HepG2 cells using 15162-1-AP (SARS antibody) at dilution of 1:25 and Alexa Fluor 488-conjugated AffiniPure Goat Anti-Rabbit IgG(H+L).