

SFXN3 Polyclonal antibody

Catalog Number: 15156-1-AP

Featured Product

4 Publications

Basic Information

Catalog Number:

15156-1-AP

Size:

700 µg/ml

Source:

Rabbit

Isotype:

IgG

Immunogen Catalog Number:

AG7203

GenBank Accession Number:

BC000124

GeneID (NCBI):

81855

UNIPROT ID:

Q9BWM7

Full Name:

sideroflexin 3

Calculated MW:

36 kDa

Observed MW:

36 kDa

Purification Method:

Antigen affinity purification

Recommended Dilutions:

WB 1:1000-1:6000

IHC 1:250-1:1000

IF/ICC 1:10-1:100

Applications

Tested Applications:

WB, IHC, IF/ICC, ELISA

Cited Applications:

WB, IHC

Species Specificity:

human, mouse, rat

Cited Species:

human, mouse

Note-IHC: suggested antigen retrieval with TE buffer pH 9.0; (*) Alternatively, antigen retrieval may be performed with citrate buffer pH 6.0

Positive Controls:

WB : C6 cells, Neuro-2a cells, rat brain tissue, NIH/3T3 cells, HeLa cells, mouse brain tissue, SH-SY5Y cells

IHC : mouse brain tissue,

IF/ICC : BxPC-3 cells,

Background Information

SFXN3, a mitochondrial membrane protein, is a member of sideroflexin family. Serum anti-SFXN3 autoantibody was elevated in early stage of the oral squamous cell carcinoma significantly, indicating its clinical value for diagnosis of oral squamous cell carcinoma.

Notable Publications

Author	Pubmed ID	Journal	Application
Brian J Sandri	30742544	Am J Respir Crit Care Med	WB
Mariluz Soula	32778843	Nat Chem Biol	WB
Jingke Xie	37650635	Nucleic Acids Res	WB

Storage

Storage:

Store at -20°C. Stable for one year after shipment.

Storage Buffer:

PBS with 0.02% sodium azide and 50% glycerol pH 7.3.

Aliquoting is unnecessary for -20°C storage

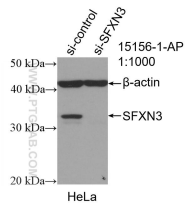
For technical support and original validation data for this product please contact:

T: 4006900926

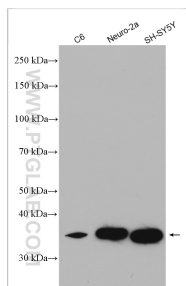
E: Proteintech-CN@ptglab.comW: ptgcn.com

This product is exclusively available under Proteintech Group brand and is not available to purchase from any other manufacturer.

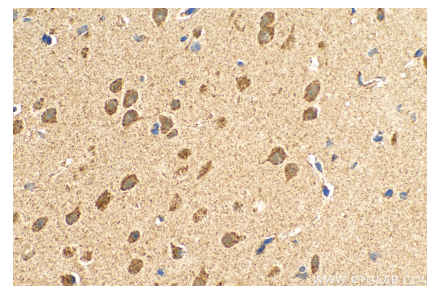
Selected Validation Data



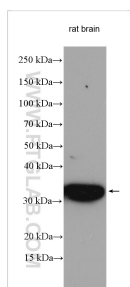
WB result of SFXN3 antibody (15156-1-AP; 1:1000; incubated at room temperature for 1.5 hours) with sh-Control and sh-SFXN3 transfected HeLa cells.



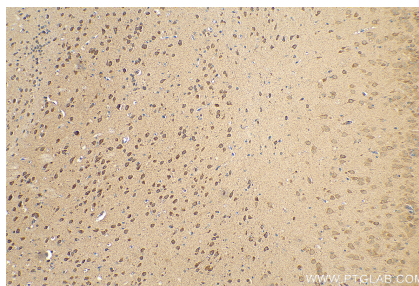
Various lysates were subjected to SDS PAGE followed by western blot with 15156-1-AP (SFXN3 antibody) at dilution of 1:3000 incubated at room temperature for 1.5 hours.



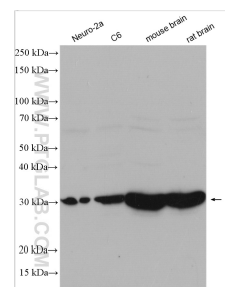
Immunohistochemical analysis of paraffin-embedded mouse brain tissue slide using 15156-1-AP (SFXN3 antibody) at dilution of 1:500 (under 40x lens). Heat mediated antigen retrieval with Tris-EDTA buffer (pH 9.0).



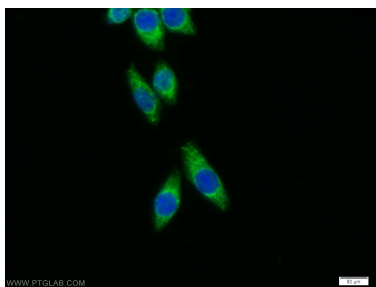
Various lysates were subjected to SDS PAGE followed by western blot with 15156-1-AP (SFXN3 antibody) at dilution of 1:3000 incubated at room temperature for 1.5 hours.



Immunohistochemical analysis of paraffin-embedded mouse brain tissue slide using 15156-1-AP (SFXN3 antibody) at dilution of 1:500 (under 10x lens). Heat mediated antigen retrieval with Tris-EDTA buffer (pH 9.0).



Various lysates were subjected to SDS PAGE followed by western blot with 15156-1-AP (SFXN3 antibody) at dilution of 1:1500 incubated at room temperature for 1.5 hours.



Immunofluorescent analysis of BxPC-3 cells using 15156-1-AP (SFXN3 antibody) at dilution of 1:25 and Alexa Fluor 488-conjugated AffiniPure Goat Anti-Rabbit IgG(H+L).