

For Research Use Only

CEP68 Polyclonal antibody

Catalog Number: 15147-1-AP

Featured Product

8 Publications



Basic Information

Catalog Number:

15147-1-AP

Size:

350 ug/ml

Source:

Rabbit

Isotype:

IgG

Immunogen Catalog Number:

AG7447

GenBank Accession Number:

BC002982

GeneID (NCBI):

23177

UNIPROT ID:

Q76N32

Full Name:

centrosomal protein 68kDa

Calculated MW:

81 kDa

Observed MW:

90 kDa, 67 kDa

Purification Method:

Antigen affinity purification

Recommended Dilutions:

WB 1:1000-1:4000

Applications

Tested Applications:

WB, ELISA

Cited Applications:

WB, IF

Species Specificity:

human

Cited Species:

human

Positive Controls:

WB : SH-SY5Y cells, HeLa cells, Jurkat cells

Background Information

CEP68, or centrosomal protein 68, is a protein-coding gene in humans. It is involved in the maintenance of centrosome cohesion, likely as part of a linker structure that prevents centrosome splitting. CEP68 is also required for the localization of CDK5RAP2 to the centrosome during interphase and contributes to the formation of CROCC/rootletin filaments. This protein is encoded by the CEP68 gene and is located on the fibers emanating from the proximal ends of centrioles. It has been associated with diseases such as Retinitis Pigmentosa 28 and is implicated in angioedema. The gene is mapped to chromosome 2 and is expressed ubiquitously in various tissues, including the brain, ovary, and others. The protein plays a crucial role in cellular functions related to the centrosome, which is a key organelle in cell division and organization. This antibody recognized two bands of 90 and 67 kDa, respectively, in good agreement with the predicted sizes of the two Cep68 isoforms (81 and 67 kDa for Cep68L and -S, respectively).

Notable Publications

Author	Pubmed ID	Journal	Application
Yuqing Xia	30404835	J Cell Sci	WB,IF
Elena Fdez	35721463	iScience	WB,IF
Delowar Hossain	34005155	J Cell Sci	WB,IF

Storage

Storage:

Store at -20°C. Stable for one year after shipment.

Storage Buffer:

PBS with 0.02% sodium azide and 50% glycerol pH 7.3.

Aliquoting is unnecessary for -20°C storage

For technical support and original validation data for this product please contact:

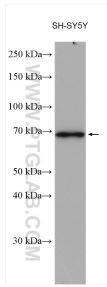
T: 4006900926

E: Proteintech-CN@ptglab.com

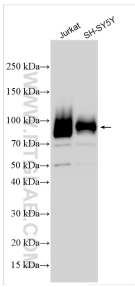
W: ptgcn.com

This product is exclusively available under Proteintech Group brand and is not available to purchase from any other manufacturer.

Selected Validation Data



SH-SY5Y cells were subjected to SDS PAGE followed by western blot with 15147-1-AP (CEP68 antibody) at dilution of 1:2000 incubated at room temperature for 1.5 hours.



Various lysates were subjected to SDS PAGE followed by western blot with 15147-1-AP (CEP68 antibody) at dilution of 1:10000 incubated at room temperature for 1.5 hours.