

For Research Use Only

RPL36 Polyclonal antibody

Catalog Number: 15145-1-AP **2 Publications**



Basic Information

Catalog Number:

15145-1-AP

Size:

450 µg/ml

Source:

Rabbit

Isotype:

IgG

Immunogen Catalog Number:

AG7437

GenBank Accession Number:

BC003052

GeneID (NCBI):

25873

UNIPROT ID:

Q9Y3U8

Full Name:

ribosomal protein L36

Calculated MW:

12 kDa

Observed MW:

12-14 kDa

Purification Method:

Antigen affinity purification

Recommended Dilutions:

WB 1:500-1:1000

Applications

Tested Applications:

WB, ELISA

Cited Applications:

WB

Species Specificity:

human, mouse, rat

Cited Species:

human, mouse

Positive Controls:

WB: PC-12 cells, BxPC-3 cells, HeLa cells, HepG2 cells, NIH/3T3 cells

Background Information

RPL36, also named as 60S ribosomal protein L36, is a 105 amino acid protein, which is a component of the large ribosomal subunit. RPL36 may be involved in the early stage of hepatocarcinogenesis, and it can be used as an independent and potential prognostic marker for resected HCC.

Notable Publications

Author	Pubmed ID	Journal	Application
Xueju Wei	35927451	Nat Cell Biol	WB
Jingming Ren	37391878	J Pineal Res	WB

Storage

Storage:

Store at -20°C. Stable for one year after shipment.

Storage Buffer:

PBS with 0.02% sodium azide and 50% glycerol pH 7.3.

Aliquoting is unnecessary for -20°C storage

For technical support and original validation data for this product please contact:

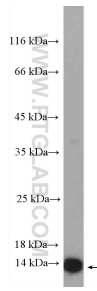
T: 4006900926

E: Proteintech-CN@ptglab.com

W: ptgcn.com

This product is exclusively available under Proteintech Group brand and is not available to purchase from any other manufacturer.

Selected Validation Data



PC-12 cells were subjected to SDS PAGE followed by western blot with 15145-1-AP (RPL36 Antibody) at dilution of 1:600 incubated at room temperature for 1.5 hours.