

For Research Use Only

GLO1 Polyclonal antibody

Catalog Number: 15140-1-AP

Featured Product

13 Publications



Basic Information

Catalog Number:

15140-1-AP

Concentration:

1200 µg/ml

Source:

Rabbit

Isotype:

IgG

Immunogen Catalog Number:

AG7314

GenBank Accession Number:

BC001741

GeneID (NCBI):

2739

UNIPROT ID:

Q04760

Full Name:

glyoxalase I

Calculated MW:

21 kDa

Observed MW:

21-25 kDa

Purification Method:

Antigen affinity purification

Recommended Dilutions:

WB 1:2000-1:10000

IP 0.5-4.0 µg for 1.0-3.0 mg of total protein lysate

IHC 1:200-1:1000

Applications

Tested Applications:

WB, IP, IHC, ELISA

Cited Applications:

WB, IF

Species Specificity:

human, mouse, rat

Cited Species:

human, mouse, rat

Note-IHC: suggested antigen retrieval with TE buffer pH 9.0; (*) Alternatively, antigen retrieval may be performed with citrate buffer pH 6.0

Positive Controls:

WB : Raji cells, HeLa cells, rat liver tissue, HepG2 cells, mouse liver tissue

IP : HepG2 cells,

IHC : human thyroid cancer tissue,

Background Information

Glo1 is known to play a role in many diseases including diabetes mellitus, Alzheimer's disease, and cancer. The molecular mass of the dimer was 46 kDa determined by gel permeation chromatography.

Notable Publications

Author	Pubmed ID	Journal	Application
Dan Tang	34815154	Phytomedicine	WB,IF
Shengya Tian	31562192	Life Sci Alliance	WB
Masahiro Watanabe	36127524	Mol Biol Rep	WB

Storage

Storage:

Store at -20°C. Stable for one year after shipment.

Storage Buffer:

PBS with 0.02% sodium azide and 50% glycerol pH 7.3.

Aliquoting is unnecessary for -20°C storage

For technical support and original validation data for this product please contact:

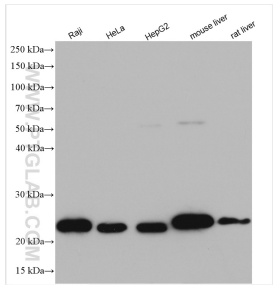
T: 4006900926

E: Proteintech-CN@ptglab.com

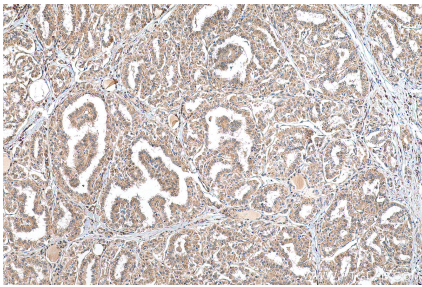
W: ptgcn.com

This product is exclusively available under Proteintech Group brand and is not available to purchase from any other manufacturer.

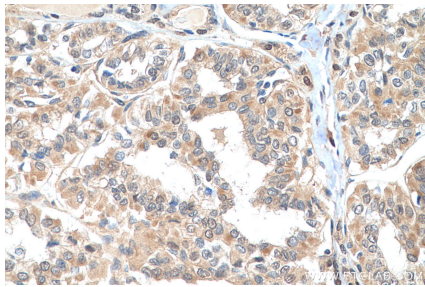
Selected Validation Data



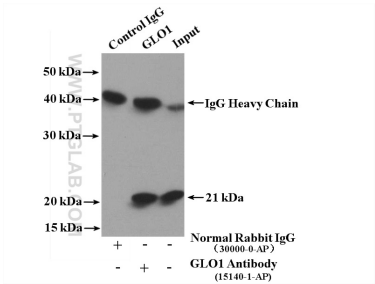
Various lysates were subjected to SDS PAGE followed by western blot with 15140-1-AP (GLO1 antibody) at dilution of 1:5000 incubated at room temperature for 1.5 hours.



Immunohistochemical analysis of paraffin-embedded human thyroid cancer tissue slide using 15140-1-AP (GLO1 antibody) at dilution of 1:8000 (under 10x lens). Heat mediated antigen retrieval with Tris-EDTA buffer (pH 9.0).



Immunohistochemical analysis of paraffin-embedded human thyroid cancer tissue slide using 15140-1-AP (GLO1 antibody) at dilution of 1:8000 (under 40x lens). Heat mediated antigen retrieval with Tris-EDTA buffer (pH 9.0).



IP result of anti-GLO1 (IP:15140-1-AP, 4ug; Detection:15140-1-AP 1:1000) with HepG2 cells lysate 1000ug.