

For Research Use Only

HSCB Polyclonal antibody

Catalog Number: 15132-1-AP **3 Publications**



Basic Information

Catalog Number:

15132-1-AP

Size:

313 µg/ml

Source:

Rabbit

Isotype:

IgG

Immunogen Catalog Number:

AG7268

GenBank Accession Number:

BC065569

GeneID (NCBI):

150274

UNIPROT ID:

Q8IWL3

Full Name:

HscB iron-sulfur cluster co-chaperone homolog (E. coli)

Calculated MW:

27 kDa

Observed MW:

27-30 kDa

Purification Method:

Antigen affinity purification

Recommended Dilutions:

WB 1:200-1:1000

IHC 1:20-1:200

Applications

Tested Applications:

IHC, WB, ELISA

Cited Applications:

WB

Species Specificity:

human, rat

Cited Species:

human

Note-IHC: suggested antigen retrieval with TE buffer pH 9.0; (*) Alternatively, antigen retrieval may be performed with citrate buffer pH 6.0

Positive Controls:

WB: rat liver tissue,

IHC: human colon cancer tissue,

Background Information

HSCB, also named as HSC20 and DNAJC20, acts as a co-chaperone in iron-sulfur cluster assembly in mitochondria.

Notable Publications

Author	Pubmed ID	Journal	Application
Mohamed Alalem	36077724	Cancers (Basel)	WB
Xiaojian Shi	38157846	Mol Cell	WB
Yuyang Liu	37917749	Science	WB

Storage

Storage:

Store at -20°C. Stable for one year after shipment.

Storage Buffer:

PBS with 0.02% sodium azide and 50% glycerol pH 7.3.

Aliquoting is unnecessary for -20°C storage

For technical support and original validation data for this product please contact:

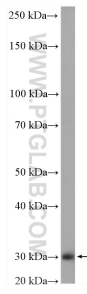
T: 4006900926

E: Proteintech-CN@ptglab.com

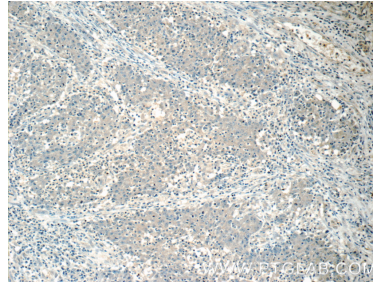
W: ptgcn.com

This product is exclusively available under Proteintech Group brand and is not available to purchase from any other manufacturer.

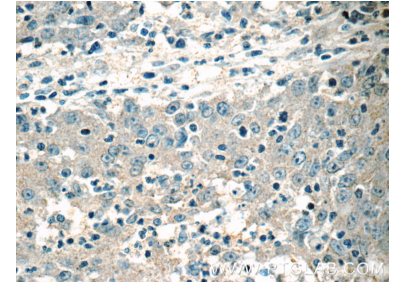
Selected Validation Data



rat liver tissue were subjected to SDS PAGE followed by western blot with 15132-1-AP (HSCB antibody) at dilution of 1:300 incubated at room temperature for 1.5 hours.



Immunohistochemical analysis of paraffin-embedded human colon cancer tissue slide using 15132-1-AP (HSCB Antibody) at dilution of 1:50 (under 10x lens).



Immunohistochemical analysis of paraffin-embedded human colon cancer tissue slide using 15132-1-AP (HSCB Antibody) at dilution of 1:50 (under 40x lens).