

For Research Use Only

ATG4B Polyclonal antibody

Catalog Number: 15131-1-AP

Featured Product

27 Publications



Basic Information

Catalog Number:

15131-1-AP

Size:

540 ug/ml

Source:

Rabbit

Isotype:

IgG

Immunogen Catalog Number:

AG7261

GenBank Accession Number:

BC000719

GeneID (NCBI):

23192

UNIPROT ID:

Q9Y4P1

Full Name:

ATG4 autophagy related 4 homolog B
(S. cerevisiae)

Calculated MW:

44 kDa

Observed MW:

44 kDa

Purification Method:

Antigen affinity purification

Recommended Dilutions:

WB 1:500-1:3000

IP 0.5-4.0 ug for 1.0-3.0 mg of total
protein lysate

IHC 1:50-1:500

Applications

Tested Applications:

WB, IHC, IP, ELISA

Cited Applications:

WB, IHC, IF, IP, CoIP

Species Specificity:

human, mouse, rat

Cited Species:

human, mouse, rat

**Note-IHC: suggested antigen retrieval with
TE buffer pH 9.0; (*) Alternatively, antigen
retrieval may be performed with citrate
buffer pH 6.0**

Positive Controls:

WB : HEK-293 cells, HuH-7 cells, HepG2 cells, Jurkat
cells, HeLa cells

IP : HeLa cells,

IHC : human pancreas cancer tissue, mouse heart
tissue

Background Information

ATG4B (autophagy 4) is also named as APG4B, AUL1, KIAA0943 and belongs to the peptidase C54 family. It is a homolog of yeast Apg4, a cysteine protease involved in autophagy and is a cytoplasmic enzyme. This protein is highly expressed in skeletal muscle, with lower expression in heart, liver, and pancreas and no expression is detected in fetal tissues by the northern blot. ATG4B is widely expressed in tumor cell lines (PMID:12446702). It has some isoforms produced by alternative splicing with molecular mass of 31-52 kDa.

Notable Publications

Author	Pubmed ID	Journal	Application
Huandi Liu	36163615	J Med Virol	WB
Luis Muniz-Feliciano	28933590	Autophagy	WB
Nan Zhang	28889000	Cancer Lett	WB

Storage

Storage:

Store at -20°C. Stable for one year after shipment.

Storage Buffer:

PBS with 0.02% sodium azide and 50% glycerol pH 7.3.

Aliquoting is unnecessary for -20°C storage

For technical support and original validation data for this product please contact:

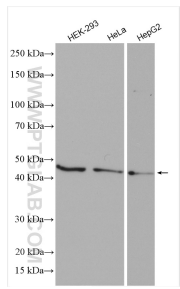
T: 4006900926

E: Proteintech-CN@ptglab.com

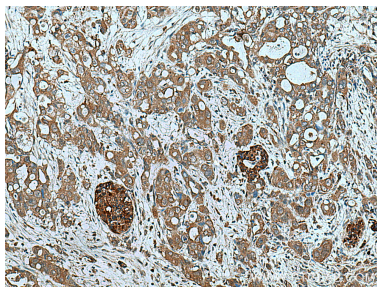
W: ptgcn.com

This product is exclusively available under Proteintech Group brand and is not available to purchase from any other manufacturer.

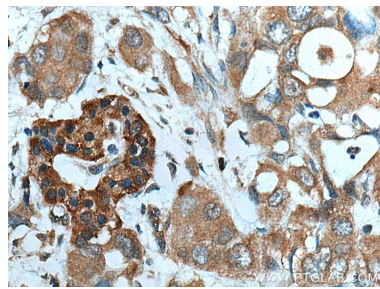
Selected Validation Data



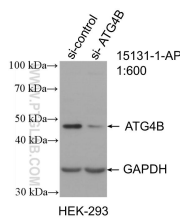
Various lysates were subjected to SDS PAGE followed by western blot with 15131-1-AP (ATG4B antibody) at dilution of 1:1500 incubated at room temperature for 1.5 hours.



Immunohistochemical analysis of paraffin-embedded human pancreas cancer tissue slide using 15131-1-AP (ATG4B antibody) at dilution of 1:200 (under 10x lens). Heat mediated antigen retrieval with Tris-EDTA buffer (pH 9.0).

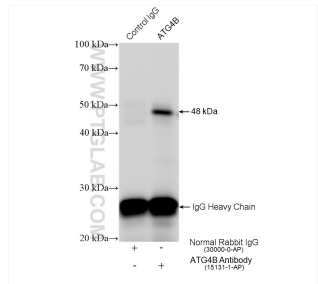


Immunohistochemical analysis of paraffin-embedded human pancreas cancer tissue slide using 15131-1-AP (ATG4B antibody) at dilution of 1:200 (under 40x lens). Heat mediated antigen retrieval with Tris-EDTA buffer (pH 9.0).



WB result of ATG4B antibody (15131-1-AP; 1:600; incubated at room temperature for 1.5 hours) with sh-Control and sh-ATG4B transfected HEK-293 cells.

WB result of ATG4B antibody (15131-1-AP; 1:1000; room temperature for 1.5 hours) with wild-type and ATG4B knockout HuH-7 cells.



IP result of anti-ATG4B (IP:15131-1-AP, 4ug; Detection:15131-1-AP 1:800) with HeLa cells lysate 1560 ug.