

For Research Use Only

NHP2 Polyclonal antibody

Catalog Number: 15128-1-AP

Featured Product

16 Publications



Basic Information

Catalog Number:

15128-1-AP

Size:

300 µg/ml

Source:

Rabbit

Isotype:

IgG

Immunogen Catalog Number:

AG7251

GenBank Accession Number:

BC000009

GeneID (NCBI):

55651

UNIPROT ID:

Q9NX24

Full Name:

NHP2 ribonucleoprotein homolog (yeast)

Calculated MW:

17 kDa

Observed MW:

17-20 kDa

Purification Method:

Antigen affinity purification

Recommended Dilutions:

WB 1:500-1:1000

IP 0.5-4.0 µg for 1.0-3.0 mg of total protein lysate

IHC 1:20-1:200

IF/ICC 1:10-1:100

Applications

Tested Applications:

WB, IHC, IF/ICC, IP, ELISA

Cited Applications:

WB, IHC, IF, IP, CoIP

Species Specificity:

human

Cited Species:

human, mouse, yeast

Note-IHC: suggested antigen retrieval with TE buffer pH 9.0; (*) Alternatively, antigen retrieval may be performed with citrate buffer pH 6.0

Positive Controls:

WB : SH-SY5Y cells, Caco-2 cells, HeLa cells

IP : HepG2 cells,

IHC : human prostate cancer tissue,

IF/ICC : HepG2 cells,

Background Information

NHP2 belongs to the H/ACA small nucleolar ribonucleoprotein (H/ACA snoRNP) complex, which catalyzes pseudouridylation of rRNA. It is required for ribosome biogenesis and telomere maintenance, and for correct processing or intranuclear trafficking of TERC, the RNA component of the telomerase reverse transcriptase (TERT) holoenzyme.

Notable Publications

Author	Pubmed ID	Journal	Application
Kim Min Sung MS	22935986	Pathology	IHC
Cai Han	35354054	Cell Rep	WB
D E MacNeil	33526451	Mol Cell Biol	WB

Storage

Storage:

Store at -20°C. Stable for one year after shipment.

Storage Buffer:

PBS with 0.02% sodium azide and 50% glycerol pH 7.3.

Aliquoting is unnecessary for -20°C storage

For technical support and original validation data for this product please contact:

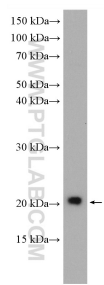
T: 4006900926

E: Proteintech-CN@ptglab.com

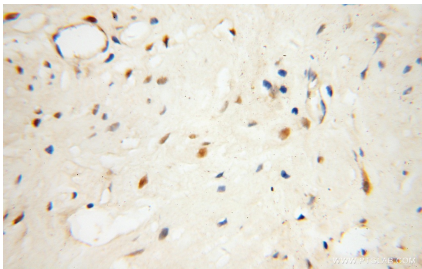
W: ptgcn.com

This product is exclusively available under Proteintech Group brand and is not available to purchase from any other manufacturer.

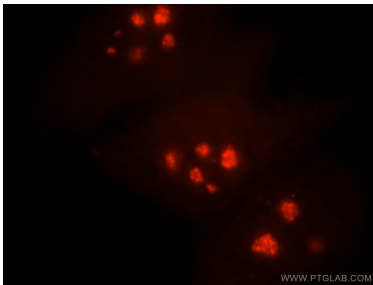
Selected Validation Data



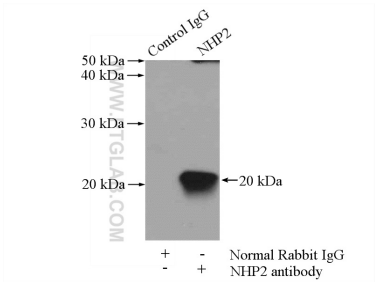
SH-SY5Y cells were subjected to SDS PAGE followed by western blot with 15128-1-AP (NHP2 antibody) at dilution of 1:600 incubated at room temperature for 1.5 hours.



Immunohistochemical analysis of paraffin-embedded human prostate cancer using 15128-1-AP (NHP2 antibody) at dilution of 1:100 (under 40x lens).



Immunofluorescent analysis of HepG2 cells, using NHP2 antibody 15128-1-AP at 1:25 dilution and Rhodamine-labeled goat anti-rabbit IgG (red).



IP result of anti-NHP2 (IP:15128-1-AP, 4ug; Detection:15128-1-AP 1:500) with HepG2 cells lysate 3600ug.