

For Research Use Only

# LMOD1 Polyclonal antibody

Catalog Number: 15117-1-AP

Featured Product

21 Publications



## Basic Information

### Catalog Number:

15117-1-AP

### Size:

750 ug/ml

### Source:

Rabbit

### Isotype:

IgG

### Immunogen Catalog Number:

AG7176

### GenBank Accession Number:

BC001755

### GeneID (NCBI):

25802

### UNIPROT ID:

P29536

### Full Name:

leiomodin 1 (smooth muscle)

### Calculated MW:

67 kDa

### Observed MW:

85 kDa, 64 kDa

### Purification Method:

Antigen affinity purification

### Recommended Dilutions:

WB 1:500-1:1000

IHC 1:50-1:500

IF-P 1:400-1:1600

## Applications

### Tested Applications:

WB, IHC, IF-P, ELISA

### Cited Applications:

WB, IHC, IF

### Species Specificity:

human, mouse, rat

### Cited Species:

human, mouse, rat

**Note-IHC: suggested antigen retrieval with TE buffer pH 9.0; (\*) Alternatively, antigen retrieval may be performed with citrate buffer pH 6.0**

### Positive Controls:

WB : mouse bladder tissue, mouse uterus tissue, HT-29 cells

IHC : human colon tissue,

IF-P : mouse heart tissue,

## Background Information

LMOD1 was initially identified as a 64-kDa autoantigen in an expression screen with sera from patients with Hashimoto's thyroiditis. Recently immunohistochemistry and immunoblotting of LMOD1 demonstrated its highly restrictive pattern of expression in SMC lineages, like adult aorta, and bladder. LMOD1 is also shown to exhibit an embryonic and adult expression pattern. These data identify LMOD1 as a new SMC-restricted gene associated with the SMC differentiated phenotype.

## Notable Publications

Author	Pubmed ID	Journal	Application
Hui Cai	36264152	Neurogastroenterol Motil	IHC
Tory P Johnson	28202777	Sci Transl Med	IF
Shreya Gupta	36505365	Front Cardiovasc Med	WB

## Storage

### Storage:

Store at -20°C. Stable for one year after shipment.

### Storage Buffer:

PBS with 0.02% sodium azide and 50% glycerol pH 7.3.

Aliquoting is unnecessary for -20°C storage

For technical support and original validation data for this product please contact:

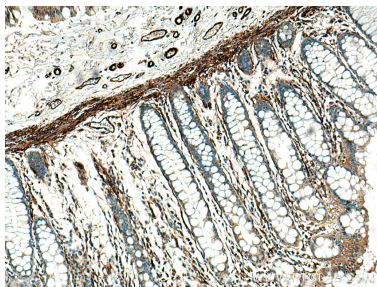
T: 4006900926

E: [Proteintech-CN@ptglab.com](mailto:Proteintech-CN@ptglab.com)

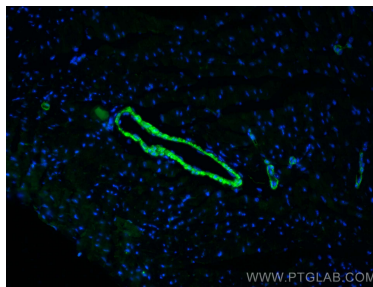
W: [ptgcn.com](http://ptgcn.com)

**This product is exclusively available under Proteintech Group brand and is not available to purchase from any other manufacturer.**

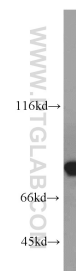
## Selected Validation Data



Immunohistochemical analysis of paraffin-embedded human colon tissue slide using 15117-1-AP (LMOD1 antibody) at dilution of 1:200 (under 10x lens). Heat mediated antigen retrieval with Tris-EDTA buffer (pH 9.0).



Immunofluorescent analysis of (4% PFA) fixed paraffin-embedded mouse heart tissue using LMOD1 antibody (15117-1-AP) at dilution of 1:800 and CoraLite®488-Conjugated AffiniPure Goat Anti-Rabbit IgG(H+L). Heat mediated antigen retrieval with Tris-EDTA buffer (pH 9.0).



mouse bladder tissue were subjected to SDS PAGE followed by western blot with 15117-1-AP (LMOD1 antibody) at dilution of 1:800 incubated at room temperature for 1.5 hours.