

For Research Use Only

# TGM2 Polyclonal antibody, PBS Only

Catalog Number: 15100-1-PBS

Featured Product



## Basic Information

<b>Catalog Number:</b> 15100-1-PBS	<b>GenBank Accession Number:</b> BC003551	<b>Purification Method:</b> Antigen affinity purification
<b>Concentration:</b> 1 mg/ml	<b>GeneID (NCBI):</b> 7052	
<b>Source:</b> Rabbit	<b>ENSEMBL Gene ID:</b> ENSG00000198959	
<b>Isotype:</b> IgG	<b>UNIPROT ID:</b> P21980	
<b>Immunogen Catalog Number:</b> AG7439	<b>Full Name:</b> transglutaminase 2 (C polypeptide, protein-glutamine-gamma- glutamyltransferase)	
	<b>Calculated MW:</b> 77 kDa	
	<b>Observed MW:</b> 77-80 kDa	

## Applications

**Tested Applications:**  
WB, IHC, IP, Indirect ELISA

**Species Specificity:**  
human

## Background Information

Transglutaminase 2 (TGM2) is a ubiquitous and multifunctional calcium-dependent enzyme belonging to the transglutaminase family. It is best known for its canonical activity of catalyzing the cross-linking of proteins by forming stable  $\epsilon$ -( $\gamma$ -glutamyl)lysine isopeptide bonds, which contributes to extracellular matrix stabilization and wound healing. Beyond this, TGM2 exhibits GTPase activity, allowing it to function as a signaling G-protein in intracellular processes. It is implicated in a wide range of physiological functions, including cell adhesion, proliferation, and apoptosis, as well as pathological conditions such as celiac disease, fibrosis, neurodegenerative disorders, and cancer metastasis, where its dysregulated expression often contributes to disease progression.

## Storage

**Storage:**  
Store at -80°C.  
**The product is shipped with ice packs. Upon receipt, store it immediately at -80°C**

**Storage Buffer:**  
PBS only, pH7.3

For technical support and original validation data for this product please contact:

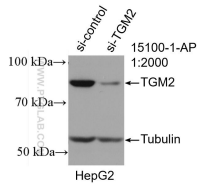
T: 4006900926

E: [Proteintech-CN@ptglab.com](mailto:Proteintech-CN@ptglab.com)

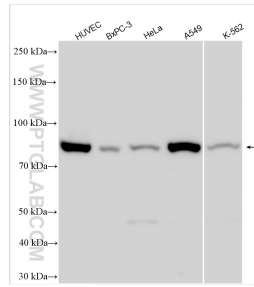
W: [ptgcn.com](http://ptgcn.com)

**This product is exclusively available under Proteintech Group brand and is not available to purchase from any other manufacturer.**

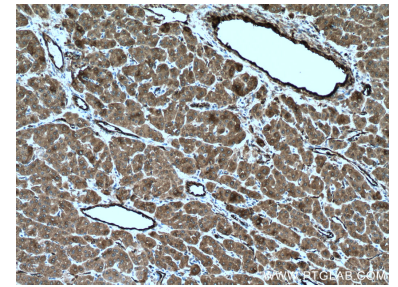
## Selected Validation Data



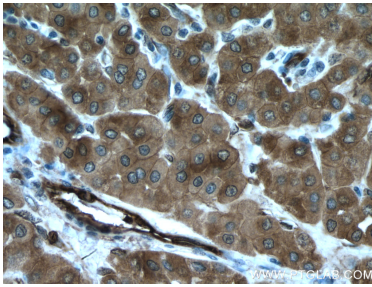
WB result of TGM2 antibody (15100-1-AP; 1:2000; incubated at room temperature for 1.5 hours) with sh-Control and sh-TGM2 transfected HepG2 cells. This data was developed using the same antibody clone with 15100-1-PBS in a different storage buffer formulation.



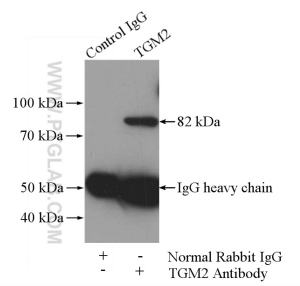
Various lysates were subjected to SDS PAGE followed by western blot with 15100-1-AP (TGM2 antibody) at dilution of 1:20000 incubated at room temperature for 1.5 hours. This data was developed using the same antibody clone with 15100-1-PBS in a different storage buffer formulation.



Immunohistochemical analysis of paraffin-embedded human liver cancer tissue slide using 15100-1-AP (TGM2 antibody) at dilution of 1:200 (under 10x lens. Heat mediated antigen retrieval with Tris-EDTA buffer (pH 9.0). This data was developed using the same antibody clone with 15100-1-PBS in a different storage buffer formulation.



Immunohistochemical analysis of paraffin-embedded human liver cancer tissue slide using 15100-1-AP (TGM2 antibody) at dilution of 1:200 (under 40x lens. Heat mediated antigen retrieval with Tris-EDTA buffer (pH 9.0). This data was developed using the same antibody clone with 15100-1-PBS in a different storage buffer formulation.



IP result of anti-TGM2 (IP:15100-1-AP, 4ug; Detection:15100-1-AP 1:400) with HeLa cells lysate 1200ug. This data was developed using the same antibody clone with 15100-1-PBS in a different storage buffer formulation.