

For Research Use Only

ATP6V1B2 Polyclonal antibody

Catalog Number:15097-1-AP

Featured Product

14 Publications



Basic Information

Catalog Number:

15097-1-AP

Size:

800 µg/ml

Source:

Rabbit

Isotype:

IgG

Immunogen Catalog Number:

AG7174

GenBank Accession Number:

BC003100

GeneID (NCBI):

526

UNIPROT ID:

P21281

Full Name:

ATPase, H⁺ transporting, lysosomal
56/58kDa, V1 subunit B2

Calculated MW:

57 kDa

Observed MW:

56-58 kDa

Purification Method:

Antigen affinity purification

Recommended Dilutions:

WB 1:5000-1:40000

IP 0.5-4.0 µg for 1.0-3.0 mg of total
protein lysate

IHC 1:50-1:500

Applications

Tested Applications:

WB, IP, IHC, ELISA

Cited Applications:

WB, IHC, IP

Species Specificity:

human, mouse, rat

Cited Species:

human, mouse, pig, monkey

**Note-IHC: suggested antigen retrieval with
TE buffer pH 9.0; (*) Alternatively, antigen
retrieval may be performed with citrate
buffer pH 6.0**

Positive Controls:

WB : A549 cells, mouse heart tissue, mouse skeletal
muscle tissue, mouse brain tissue, HeLa cells, rat brain
tissue, K-562 cells

IP : mouse brain tissue,

IHC : human colon cancer tissue,

Background Information

ATP6V1B2(V-type proton ATPase subunit B, brain isoform) is also named as ATP6B2, VPP3,HO57. It belongs to the ATPase alpha/beta chains family.V-ATPase is an heteromultimeric enzyme composed of a peripheral catalytic V1 complex attached to an integral membrane V0 proton pore complex.The quasi-ubiquitous ATP6V1B2 is one of 2 isoforms of ATP6V1 and is expressed in most cell types, where it plays a major role in organelle acidification(PMID:18667600).

Notable Publications

Author	Pubmed ID	Journal	Application
Ken G Victor	28960461	Synapse	WB
Tomas Doyle	30478388	Nat Microbiol	WB
Lanxin Yuan	34835488	Microorganisms	WB

Storage

Storage:

Store at -20°C. Stable for one year after shipment.

Storage Buffer:

PBS with 0.02% sodium azide and 50% glycerol pH 7.3.

Aliquoting is unnecessary for -20°C storage

For technical support and original validation data for this product please contact:

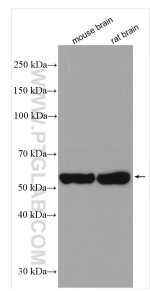
T: 4006900926

E: Proteintech-CN@ptglab.com

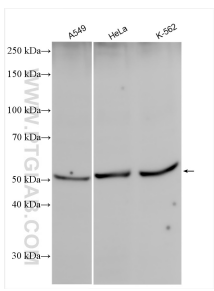
W: ptgcn.com

This product is exclusively available under Proteintech Group brand and is not available to purchase from any other manufacturer.

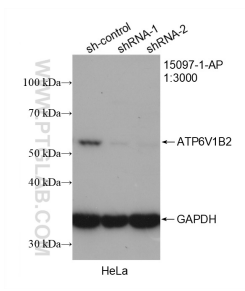
Selected Validation Data



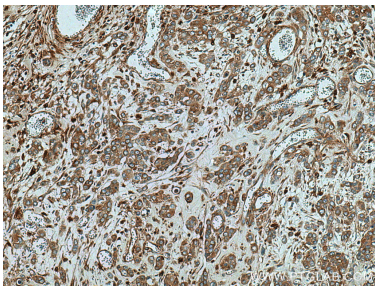
Various lysates were subjected to SDS PAGE followed by western blot with 15097-1-AP (ATP6V1B2 antibody) at dilution of 1:5000 incubated at room temperature for 1.5 hours.



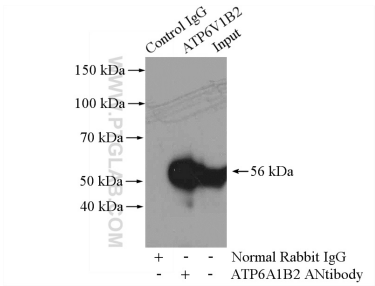
Various lysates were subjected to SDS PAGE followed by western blot with 15097-1-AP (ATP6V1B2 antibody) at dilution of 1:10000 incubated at room temperature for 1.5 hours.



WB result of ATP6V1B2 antibody (15097-1-AP; 1:3000; incubated at room temperature for 1.5 hours) with sh-Control and sh-ATP6V1B2 transfected HeLa cells.



Immunohistochemical analysis of paraffin-embedded human colon cancer tissue slide using 15097-1-AP (ATP6V1B2 antibody) at dilution of 1:200 (under 10x lens).



IP result of anti-ATP6V1B2 (IP:15097-1-AP, 4ug; Detection:15097-1-AP 1:1000) with mouse brain tissue lysate 4000ug.