

For Research Use Only

ANTXR1 Polyclonal antibody

Catalog Number: 15091-1-AP

Featured Product

4 Publications



Basic Information

Catalog Number:

15091-1-AP

Size:

400 µg/ml

Source:

Rabbit

Isotype:

IgG

Immunogen Catalog Number:

AG4626

GenBank Accession Number:

BC012074

GeneID (NCBI):

84168

UNIPROT ID:

Q9H6X2

Full Name:

anthrax toxin receptor 1

Calculated MW:

63 kDa

Observed MW:

85 kDa, 80 kDa

Purification Method:

Antigen affinity purification

Recommended Dilutions:

WB 1:500-1:1000

IHC 1:20-1:200

IF 1:50-1:500

Applications

Tested Applications:

IF/ICC, IHC, WB, ELISA

Cited Applications:

WB, IF, IHC

Species Specificity:

human, mouse, rat

Cited Species:

human, mouse

Note-IHC: suggested antigen retrieval with TE buffer pH 9.0; (*) Alternatively, antigen retrieval may be performed with citrate buffer pH 6.0

Positive Controls:

WB: mouse testis tissue, HeLa cells, mouse lung tissue, PC-13 cells

IHC: human colon cancer tissue,

IF: HeLa cells,

Background Information

Tumor endothelial marker 8 (TEM8, ANTXR1) and capillary morphogenesis protein 2 (CMG2, ANTXR2) are the two well-characterized anthrax toxin receptors, each containing a von Willebrand factor A (vWA) domain responsible for anthrax protective antigen (PA) binding (PMID: 23271637). TEM8 is a highly-conserved single-pass cell-surface protein overexpressed on tumor-infiltrating vasculature, and is thought to play a positive role in endothelial cell activities related to angiogenesis (PMID: 11559528; 15777794). The long isoforms of TEM8 have been identified as an 80-85 kDa doublet, and experimental deglycosylation reduced the molecular mass to 70 kDa, indicating that TEM8 undergoes multiple glycosylations (PMID: 14871805; 15689409).

Notable Publications

Author	Pubmed ID	Journal	Application
Yuanchun Li	34285576	Cancer Manag Res	WB
Zhiqiang Dong	34956398	Comput Math Methods Med	WB
Fei Geng	31934301	Am J Transl Res	WB,IHC

Storage

Storage:

Store at -20°C. Stable for one year after shipment.

Storage Buffer:

PBS with 0.02% sodium azide and 50% glycerol pH 7.3.

Aliquoting is unnecessary for -20°C storage

For technical support and original validation data for this product please contact:

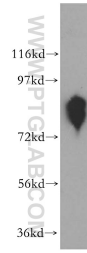
T: 4006900926

E: Proteintech-CN@ptglab.com

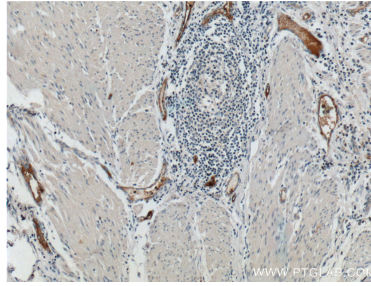
W: ptgcn.com

This product is exclusively available under Proteintech Group brand and is not available to purchase from any other manufacturer.

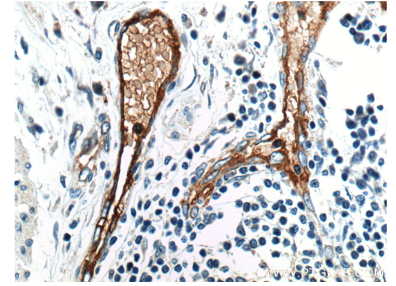
Selected Validation Data



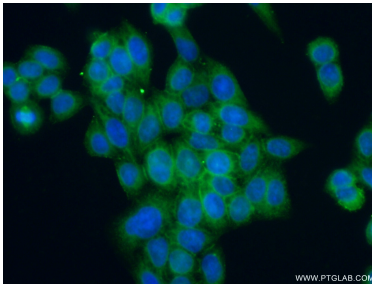
mouse testis tissue were subjected to SDS PAGE followed by western blot with 15091-1-AP (TEM8 antibody) at dilution of 1:500 incubated at room temperature for 1.5 hours.



Immunohistochemical analysis of paraffin-embedded human colon cancer tissue slide using 15091-1-AP (TEM8 antibody at dilution of 1:200 (under 10x lens).



Immunohistochemical analysis of paraffin-embedded human colon cancer tissue slide using 15091-1-AP (TEM8 antibody at dilution of 1:200 (under 40x lens).



Immunofluorescent analysis of (-20°C Ethanol) fixed HeLa cells using 15091-1-AP (TEM8 antibody) at dilution of 1:50 and Alexa Fluor 488-conjugated AffiniPure Goat Anti-Rabbit IgG(H+L).