

For Research Use Only

ALDH3A2 Polyclonal antibody

Catalog Number: 15090-1-AP **6 Publications**



Basic Information

Catalog Number:

15090-1-AP

Size:

280 µg/ml

Source:

Rabbit

Isotype:

IgG

Immunogen Catalog Number:

AG1687

GenBank Accession Number:

BC002430

GeneID (NCBI):

224

UNIPROT ID:

P51648

Full Name:

aldehyde dehydrogenase 3 family, member A2

Calculated MW:

55 kDa

Observed MW:

50-57 kDa

Purification Method:

Antigen affinity purification

Recommended Dilutions:

WB 1:1000-1:4000

IP 0.5-4.0 µg for 1.0-3.0 mg of total protein lysate

IHC 1:50-1:500

IF 1:10-1:100

Applications

Tested Applications:

FC, IF/ICC, IHC, IP, WB, ELISA

Cited Applications:

WB, IHC

Species Specificity:

human, mouse, rat

Cited Species:

human, rat, mouse

Note-IHC: suggested antigen retrieval with TE buffer pH 9.0; (*) Alternatively, antigen retrieval may be performed with citrate buffer pH 6.0

Positive Controls:

WB : HEK-293T cells, mouse liver tissue, rat liver tissue

IP : HEK-293 cells,

IHC : human liver cancer tissue,

IF : HeLa cells,

Background Information

Notable Publications

Author	Pubmed ID	Journal	Application
Wei Chen	31565850	J Cell Mol Med	IHC
Pamela A Young	30190326	J Biol Chem	WB
Kristian Nzogang Fomo	36313990	Front Med (Lausanne)	

Storage

Storage:

Store at -20°C. Stable for one year after shipment.

Storage Buffer:

PBS with 0.02% sodium azide and 50% glycerol pH 7.3.

Aliquoting is unnecessary for -20°C storage

For technical support and original validation data for this product please contact:

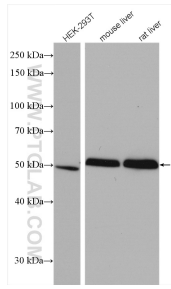
T: 4006900926

E: Proteintech-CN@ptglab.com

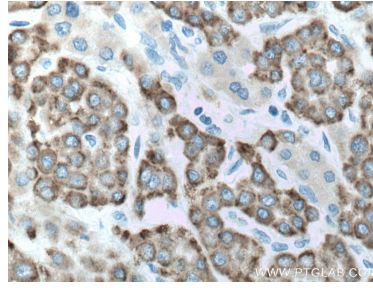
W: ptgcn.com

This product is exclusively available under Proteintech Group brand and is not available to purchase from any other manufacturer.

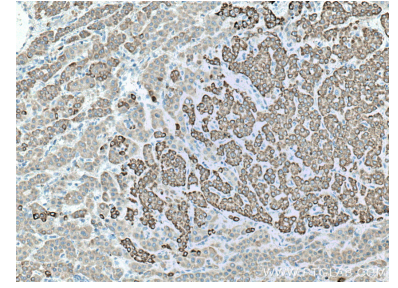
Selected Validation Data



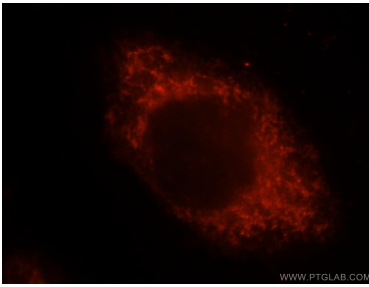
Various lysates were subjected to SDS PAGE followed by western blot with 15090-1-AP (ALDH3A2 antibody) at dilution of 1:2000 incubated at room temperature for 1.5 hours.



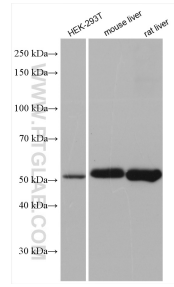
Immunohistochemical analysis of paraffin-embedded human liver cancer tissue slide using 15090-1-AP (ALDH3A2 antibody) at dilution of 1:200 (under 40x lens). Heat mediated antigen retrieval with Tris-EDTA buffer (pH 9.0).



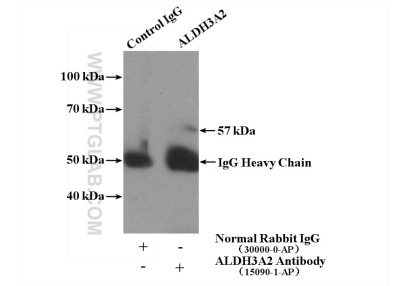
Immunohistochemical analysis of paraffin-embedded human liver cancer tissue slide using 15090-1-AP (ALDH3A2 antibody) at dilution of 1:200 (under 10x lens). Heat mediated antigen retrieval with Tris-EDTA buffer (pH 9.0).



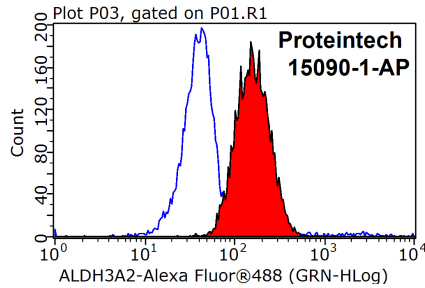
Immunofluorescent analysis of HeLa cells, using ALDH3A2 antibody 15090-1-AP at 1:25 dilution and Rhodamine-labeled goat anti-rabbit IgG (red).



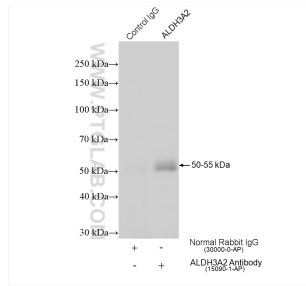
Various lysates were subjected to SDS PAGE followed by western blot with 15090-1-AP (ALDH3A2 antibody) at dilution of 1:5000 incubated at room temperature for 1.5 hours.



IP result of anti-ALDH3A2 (IP:15090-1-AP, 4ug; Detection:15090-1-AP 1:1000) with HEK-293 cells lysate 3000ug.



1x10⁶ HeLa cells were stained with 0.2ug ALDH3A2 antibody (15090-1-AP, red) and control antibody (blue). Fixed with 90% MeOH blocked with 3% BSA (30 min). Alexa Fluor 488-conjugated AffiniPure Goat Anti-Rabbit IgG(H+L) with dilution 1:1000.



IP result of anti-ALDH3A2 (IP:15090-1-AP, 4ug; Detection:15090-1-AP 1:6000) with HEK-293 cells lysate 680ug.