

For Research Use Only

SEC61B Polyclonal antibody

Catalog Number: 15087-1-AP **19 Publications**



Basic Information

Catalog Number:

15087-1-AP

Size:

400 µg/ml

Source:

Rabbit

Isotype:

IgG

Immunogen Catalog Number:

AG7169

GenBank Accession Number:

BC001734

GeneID (NCBI):

10952

UNIPROT ID:

P60468

Full Name:

Sec61 beta subunit

Calculated MW:

10 kDa

Observed MW:

10-15 kDa

Purification Method:

Antigen affinity purification

Recommended Dilutions:

WB 1:1000-1:6000

IP 0.5-4.0 µg for 1.0-3.0 mg of total

protein lysate

IHC 1:50-1:500

IF 1:50-1:500

Applications

Tested Applications:

IF/ICC, IF-P, IHC, IP, WB, ELISA

Cited Applications:

WB, IP, IF, IHC

Species Specificity:

human, mouse, rat

Cited Species:

human, monkey, mouse, zebrafish

Note-IHC: suggested antigen retrieval with TE buffer pH 9.0; (*) Alternatively, antigen retrieval may be performed with citrate buffer pH 6.0

Positive Controls:

WB: HEK-293 cells, HeLa cells, HepG2 cells, L02 cells, mouse liver tissue, rat liver tissue

IP: HepG2 cells,

IHC: human liver tissue, human cervical cancer tissue

IF: HepG2 cells, HeLa cells, mouse pancreas tissue

Background Information

The heteromeric SEC61 complex is composed of alpha, beta and gamma subunits. Oligomers of the SEC61 complex form a transmembrane channel where proteins are translocated across and integrated into the ER membrane (PMID: 10212142). SEC61B is the beta subunit of the SEC61 complex. It has been reported that SEC61B facilitates cotranslational protein transport and interacts with the signal peptidase during translocation (PMID: 9585408).

Notable Publications

Author	Pubmed ID	Journal	Application
Hideaki Morishita	31526472	Elife	IF
Suman Rimal	34663454	Acta Neuropathol Commun	WB, IP
Stefan Norlin	26438609	Diabetes	WB, IHC

Storage

Storage:

Store at -20°C. Stable for one year after shipment.

Storage Buffer:

PBS with 0.02% sodium azide and 50% glycerol pH 7.3.

Aliquoting is unnecessary for -20°C storage

For technical support and original validation data for this product please contact:

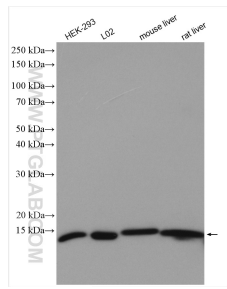
T: 4006900926

E: Proteintech-CN@ptglab.com

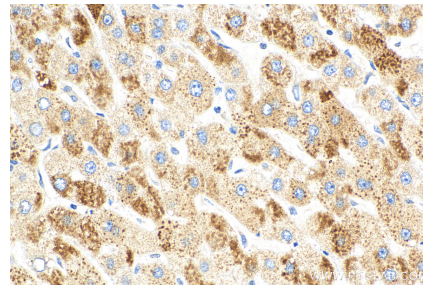
W: ptgcn.com

This product is exclusively available under Proteintech Group brand and is not available to purchase from any other manufacturer.

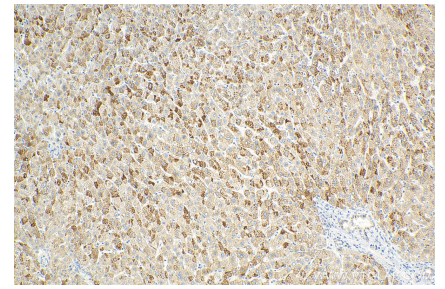
Selected Validation Data



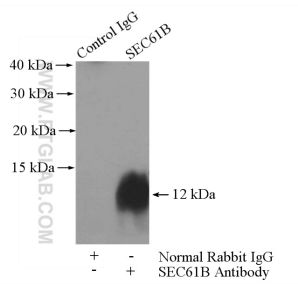
Various lysates were subjected to SDS PAGE followed by western blot with 15087-1-AP (SEC61B antibody) at dilution of 1:3000 incubated at room temperature for 1.5 hours.



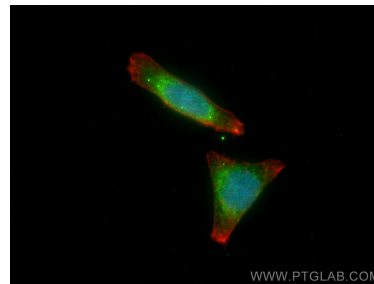
Immunohistochemical analysis of paraffin-embedded human liver tissue slide using 15087-1-AP (SEC61B antibody) at dilution of 1:200 (under 40x lens). Heat mediated antigen retrieval with Tris-EDTA buffer (pH 9.0).



Immunohistochemical analysis of paraffin-embedded human liver tissue slide using 15087-1-AP (SEC61B antibody) at dilution of 1:200 (under 10x lens). Heat mediated antigen retrieval with Tris-EDTA buffer (pH 9.0).



IP result of anti-SEC61B (IP:15087-1-AP, 4ug; Detection:15087-1-AP 1:500) with HepG2 cells lysate 1800ug.



Immunofluorescent analysis of (4% PFA) fixed HepG2 cells using SEC61B antibody (15087-1-AP) at dilution of 1:200 and CoraLite®488-Conjugated AffiniPure Goat Anti-Rabbit IgG(H+L), CL594-Phalloidin (red).