

For Research Use Only

# PCBP2 Polyclonal antibody

Catalog Number:15070-1-AP

Featured Product

15 Publications



## Basic Information

### Catalog Number:

15070-1-AP

### Size:

400 µg/ml

### Source:

Rabbit

### Isotype:

IgG

### Immunogen Catalog Number:

AG7102

### GenBank Accession Number:

BC001155

### GeneID (NCBI):

5094

### UNIPROT ID:

Q15366

### Full Name:

poly(rC) binding protein 2

### Calculated MW:

39 kDa

### Observed MW:

43 kDa

### Purification Method:

Antigen affinity purification

### Recommended Dilutions:

WB 1:1000-1:6000

IHC 1:50-1:500

IF/ICC 1:50-1:500

## Applications

### Tested Applications:

WB, IHC, IF/ICC, ELISA

### Cited Applications:

WB, IHC, IF, ColP

### Species Specificity:

human

### Cited Species:

human, rat

**Note-IHC: suggested antigen retrieval with TE buffer pH 9.0; (\*) Alternatively, antigen retrieval may be performed with citrate buffer pH 6.0**

### Positive Controls:

WB : HeLa cells, Jurkat cells

IHC : human testis tissue, human cervical cancer tissue, human colon tissue, human liver tissue

IF/ICC : HeLa cells,

## Background Information

Poly(rC)-binding protein 2 (PCBP2) is a single-stranded nucleic acid binding protein that binds preferentially to oligo dC. It is also named Heterogeneous nuclear ribonucleoprotein E2, binds also poly(rU). It negatively regulates cellular antiviral responses mediated by MAVS signaling. It acts as an adapter between MAVS and the E3 ubiquitin ligase ITCH, therefore triggering MAVS ubiquitination and degradation.(19881509) This antibody can recognize PCBP2 and PCBP1.

## Notable Publications

Author	Pubmed ID	Journal	Application
Xiaonan Wang	33037085	Mol Cancer Res	IHC,WB
Haiyan Gu	35322803	Nat Commun	WB,ColP
Changyu Chen	29744291	FEBS Open Bio	WB,IHC

## Storage

### Storage:

Store at -20°C. Stable for one year after shipment.

### Storage Buffer:

PBS with 0.02% sodium azide and 50% glycerol pH 7.3.

Aliquoting is unnecessary for -20°C storage

For technical support and original validation data for this product please contact:

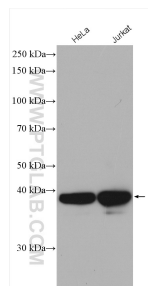
T: 4006900926

E: Proteintech-CN@ptglab.com

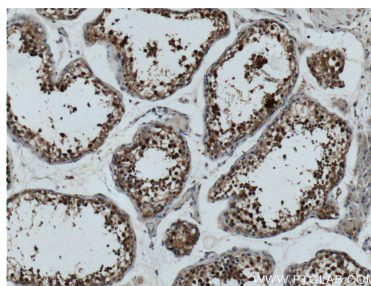
W: ptgcn.com

This product is exclusively available under Proteintech Group brand and is not available to purchase from any other manufacturer.

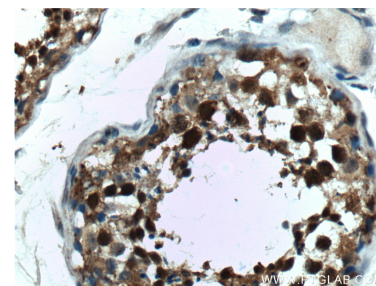
## Selected Validation Data



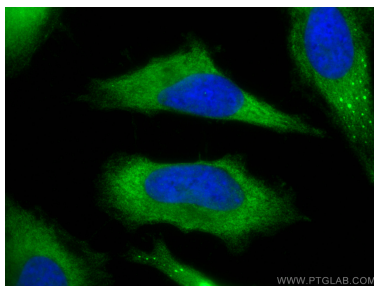
Various lysates were subjected to SDS PAGE followed by western blot with 15070-1-AP (PCBP2 antibody) at dilution of 1:4000 incubated at room temperature for 1.5 hours.



Immunohistochemical analysis of paraffin-embedded human testis tissue slide using 15070-1-AP (PCBP2 Antibody) at dilution of 1:200 (under 10x lens).



Immunohistochemical analysis of paraffin-embedded human testis tissue slide using 15070-1-AP (PCBP2 Antibody) at dilution of 1:200 (under 40x lens).



Immunofluorescent analysis of (-20°C Methanol) fixed HeLa cells using PCBP2 antibody (15070-1-AP) at dilution of 1:200 and CoraLite®488-Conjugated Goat Anti-Rabbit IgG(H+L).