

For Research Use Only

AZI2/NAP1 Polyclonal antibody

Catalog Number: 15042-1-AP **5 Publications**



Basic Information

Catalog Number: 15042-1-AP	GenBank Accession Number: BC001139	Purification Method: Antigen affinity purification
Size: 900 µg/ml	GeneID (NCBI): 64343	Recommended Dilutions: WB 1:1000-1:10000
Source: Rabbit	UNIPROT ID: Q9H6S1	IP 0.5-4.0 ug for 1.0-3.0 mg of total protein lysate
Isotype: IgG	Full Name: 5-azacytidine induced 2	IHC 1:50-1:500
Immunogen Catalog Number: AG6892	Calculated MW: 45 kDa	IF 1:200-1:800
	Observed MW: 45 kDa	

Applications

Tested Applications: IF/ICC, IHC, IP, WB, ELISA	Positive Controls: WB : HEK-293 cells, HeLa cells
Cited Applications: IF, IHC, WB	IP : HEK-293 cells, HepG2 cells
Species Specificity: human	IHC : mouse testis tissue, human pancreas tissue, human stomach tissue, human testis tissue
Cited Species: human	IF : HepG2 cells, HeLa cells
Note-IHC: suggested antigen retrieval with TE buffer pH 9.0; (*) Alternatively, antigen retrieval may be performed with citrate buffer pH 6.0	

Background Information

AZI2, also known as NAP1, is a TNF receptor (TNFR)-associated factor family member-associated NF- κ B activator-binding kinase 1-binding protein that regulates the production of IFNs. It is an adapter protein which binds TBK1 and IKKBE playing a role in antiviral innate immunity.

Notable Publications

Author	Pubmed ID	Journal	Application
Run Fang	29125880	PLoS Pathog	WB
Takako Okamoto	32580962	Cancer Res	WB
Swagatika Paul	38059900	J Cell Biol	WB

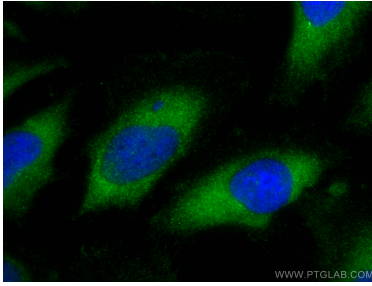
Storage

Storage:
Store at -20°C. Stable for one year after shipment.
Storage Buffer:
PBS with 0.02% sodium azide and 50% glycerol pH 7.3.
Aliquoting is unnecessary for -20°C storage

For technical support and original validation data for this product please contact:
T: 4006900926 E: Proteintech-CN@ptglab.com W: ptgcn.com

This product is exclusively available under Proteintech Group brand and is not available to purchase from any other manufacturer.

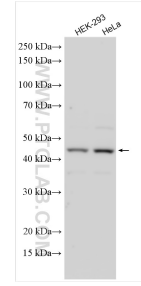
Selected Validation Data



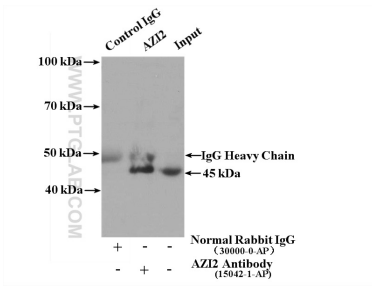
Immunofluorescent analysis of (-20°C Methanol) fixed HeLa cells using AZI2/NAP1 antibody (15042-1-AP) at dilution of 1:400 and CoraLite®488-Conjugated AffiniPure Goat Anti-Rabbit IgG(H+L).



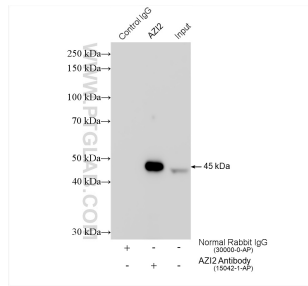
Immunofluorescent analysis of (-20°C Ethanol) fixed HepG2 cells using AZI2/NAP1 antibody (15042-1-AP) at dilution of 1:400 and CoraLite®488-Conjugated AffiniPure Goat Anti-Rabbit IgG(H+L), CL594-Phalloidin (red).



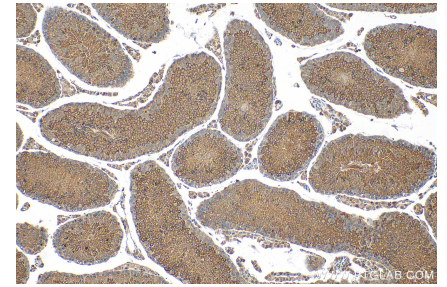
Various lysates were subjected to SDS PAGE followed by western blot with 15042-1-AP (AZI2/NAP1 antibody) at dilution of 1:15000 incubated at room temperature for 1.5 hours.



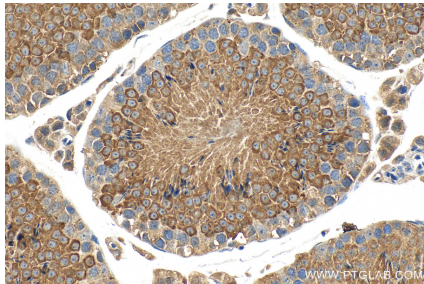
IP result of anti-AZI2/NAP1 (IP:15042-1-AP, 4ug; Detection:15042-1-AP 1:300) with HepG2 cells lysate 3000 ug.



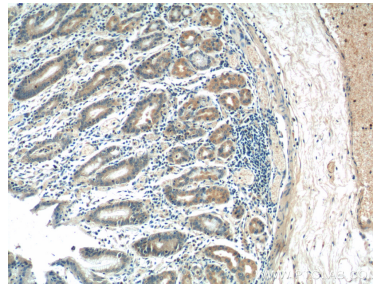
IP result of anti-AZI2/NAP1 (IP:15042-1-AP, 4ug; Detection:15042-1-AP 1:8000) with HEK-293 cells lysate 1400 ug.



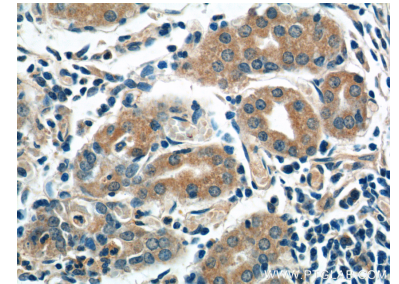
Immunohistochemical analysis of paraffin-embedded mouse testis tissue slide using 15042-1-AP (AZI2/NAP1 antibody) at dilution of 1:200 (under 10x lens). Heat mediated antigen retrieval with Tris-EDTA buffer (pH 9.0).



Immunohistochemical analysis of paraffin-embedded mouse testis tissue slide using 15042-1-AP (AZI2/NAP1 antibody) at dilution of 1:200 (under 40x lens). Heat mediated antigen retrieval with Tris-EDTA buffer (pH 9.0).



Immunohistochemical analysis of paraffin-embedded human stomach tissue slide using 15042-1-AP (AZI2/NAP1 antibody) at dilution of 1:50 (under 10x lens).



Immunohistochemical analysis of paraffin-embedded human stomach tissue slide using 15042-1-AP (AZI2/NAP1 antibody) at dilution of 1:50 (under 40x lens).