

For Research Use Only

MRPL14 Polyclonal antibody

Catalog Number: 15040-1-AP **1 Publications**



Basic Information

Catalog Number: 15040-1-AP	GenBank Accession Number: BC065005	Purification Method: Antigen affinity purification
Size: 240 µg/ml	GeneID (NCBI): 64928	Recommended Dilutions: WB 1:200-1:1000 IF 1:20-1:200
Source: Rabbit	UNIPROT ID: Q6P1L8	
Isotype: IgG	Full Name: mitochondrial ribosomal protein L14	
Immunogen Catalog Number: AG6808	Calculated MW: 16 kDa	
	Observed MW: 16 kDa	

Applications

Tested Applications: IF/ICC, WB, ELISA	Positive Controls: WB : HEK-293 cells, IF : HEK-293 cells,
Cited Applications: WB	
Species Specificity: human, mouse, rat	
Cited Species: HUMAN	

Background Information

Notable Publications

Author	Pubmed ID	Journal	Application
Alexandre Janer	27390132	EMBO Mol Med	WB

Storage

Storage:
Store at -20°C. Stable for one year after shipment.
Storage Buffer:
PBS with 0.02% sodium azide and 50% glycerol pH 7.3.
Aliquoting is unnecessary for -20°C storage

For technical support and original validation data for this product please contact:

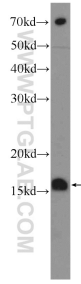
T: 4006900926

E: Proteintech-CN@ptglab.com

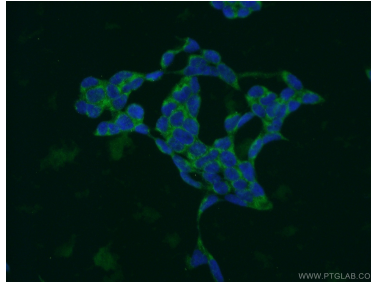
W: ptgcn.com

This product is exclusively available under Proteintech Group brand and is not available to purchase from any other manufacturer.

Selected Validation Data



HEK-293 cells were subjected to SDS PAGE followed by western blot with 15040-1-AP (MRPL14 Antibody) at dilution of 1:300 incubated at 4 degree celsius over night.



Immunofluorescent analysis of HEK-293 cells using 15040-1-AP (MRPL14 antibody) at dilution of 1:50 and Alexa Fluor 488-conjugated AffiniPure Goat Anti-Rabbit IgG(H+L).