

OSGEP Polyclonal antibody

Catalog Number: 15033-1-AP

1 Publications

Basic Information

Catalog Number:

15033-1-AP

Size:

450 µg/ml

Source:

Rabbit

Isotype:

IgG

Immunogen Catalog Number:

AG4308

GenBank Accession Number:

BC032310

GeneID (NCBI):

55644

UNIPROT ID:

Q9NPF4

Full Name:

O-sialoglycoprotein endopeptidase

Calculated MW:

36 kDa

Observed MW:

36 kDa

Purification Method:

Antigen affinity purification

Recommended Dilutions:

WB 1:1000-1:4000

IHC 1:50-1:500

Applications

Tested Applications:

IHC, WB, ELISA

Cited Applications:

WB

Species Specificity:

human, mouse

Cited Species:

human

Note-IHC: suggested antigen retrieval with TE buffer pH 9.0; (*) Alternatively, antigen retrieval may be performed with citrate buffer pH 6.0

Positive Controls:

WB: PC-3 cells, human heart tissue, Raji cells, mouse colon tissue

IHC: human kidney tissue, human heart tissue, human pancreas cancer tissue

Background Information

OSGEP(O-sialoglycoprotein endopeptidase) is also named as hOSGEP, GCPL1 and belongs to the KAE1 / YgjD family. The deduced 335-amino acid OSGEP protein has a predicted molecular mass of 36.4 kDa. It is a protease whose target is O-linked sialic acid-containing glycoproteins, such as episialin(PMID:10859271). It is involved in the metabolism of glycosylated proteins as a glycoprotein-related chaperon protease(PMID: 20824107).

Notable Publications

| Author | Pubmed ID | Journal | Application |
|--------------|-----------|-------------------|-------------|
| Jin-Tao Wang | 35104889 | Nucleic Acids Res | WB |

Storage

Storage:

Store at -20°C. Stable for one year after shipment.

Storage Buffer:

PBS with 0.02% sodium azide and 50% glycerol pH 7.3.

Aliquoting is unnecessary for -20°C storage

For technical support and original validation data for this product please contact:

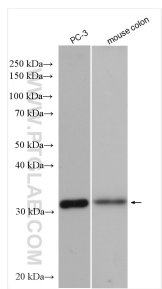
T: 4006900926

E: Proteintech-CN@ptglab.com

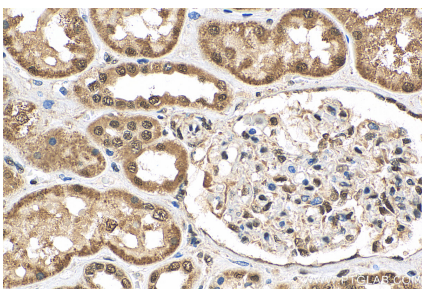
W: ptgcn.com

This product is exclusively available under Proteintech Group brand and is not available to purchase from any other manufacturer.

Selected Validation Data



PC-3 cells were subjected to SDS PAGE followed by western blot with 15033-1-AP (OSGEP antibody) at dilution of 1:2000 incubated at room temperature for 1.5 hours.



Immunohistochemical analysis of paraffin-embedded human kidney tissue slide using 15033-1-AP (OSGEP antibody) at dilution of 1:200 (under 40x lens). Heat mediated antigen retrieval with Tris-EDTA buffer (pH 9.0).