

For Research Use Only

CPSF4 Polyclonal antibody

Catalog Number: 15023-1-AP

Featured Product

13 Publications



Basic Information

Catalog Number:

15023-1-AP

Concentration:

550 ug/ml

Source:

Rabbit

Isotype:

IgG

Immunogen Catalog Number:

AG7103

GenBank Accession Number:

BC003101

GeneID (NCBI):

10898

UNIPROT ID:

O95639

Full Name:

cleavage and polyadenylation
specific factor 4, 30kDa

Calculated MW:

30 kDa

Observed MW:

27-30 kDa

Purification Method:

Antigen affinity purification

Recommended Dilutions:

WB 1:500-1:1000

IP 0.5-4.0 ug for 1.0-3.0 mg of total
protein lysate

IHC 1:20-1:200

IF/ICC 1:20-1:200

Applications

Tested Applications:

WB, IHC, IF/ICC, IP, ELISA

Cited Applications:

WB, IHC, IF, IP

Species Specificity:

human, mouse

Cited Species:

human, pig

Positive Controls:

WB : Jurkat cells, HepG2 cells, HeLa cells, HEK-293
cells

IP : HeLa cells,

IHC : human endometrial cancer tissue,

IF/ICC : HepG2 cells,

**Note-IHC: suggested antigen retrieval with
TE buffer pH 9.0; (*) Alternatively, antigen
retrieval may be performed with citrate
buffer pH 6.0**

Background Information

The mature 3-prime ends of cellular mRNAs are produced by endonucleolytic cleavage of the primary transcripts, followed by polyadenylation of the upstream cleavage products. The cleavage and polyadenylation specificity factor (CPSF) has a essential role in pre-mRNA 3-prime end processing in that it is required in both the cleavage step and subsequent poly(A) addition [PMID: 9651582]. CPSF4 is a component of the cleavage and polyadenylation specificity factor (CPSF) complex, whose other components are CPSF1, CPSF2, CPSF3 and FIP1L1.

Notable Publications

Author	Pubmed ID	Journal	Application
Liutao Chen	36094741	EMBO Rep	WB
Zhipeng Tang	26628108	Mol Oncol	WB,IF
Sadaf Ashraf	30886197	Sci Rep	IHC,IF

Storage

Storage:

Store at -20°C. Stable for one year after shipment.

Storage Buffer:

PBS with 0.02% sodium azide and 50% glycerol pH 7.3.

Aliquoting is unnecessary for -20°C storage

For technical support and original validation data for this product please contact:

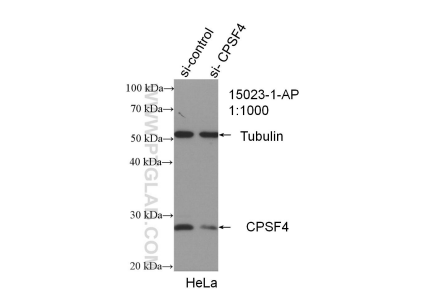
T: 4006900926

E: Proteintech-CN@ptglab.com

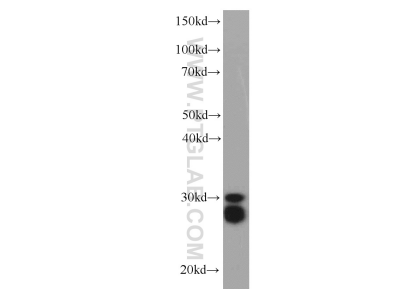
W: ptgcn.com

This product is exclusively available under Proteintech Group brand and is not available to purchase from any other manufacturer.

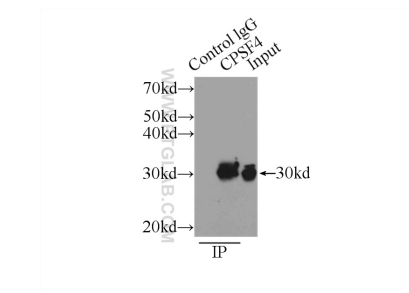
Selected Validation Data



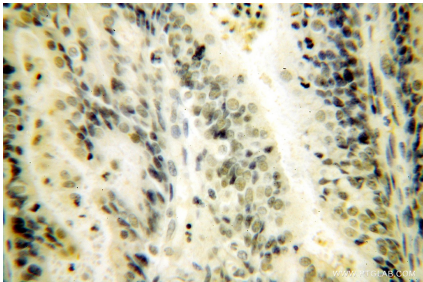
WB result of CPSF4 antibody (15023-1-AP; 1:1000; incubated at room temperature for 1.5 hours) with sh-Control and sh-CPSF4 transfected HEK-293 cells.



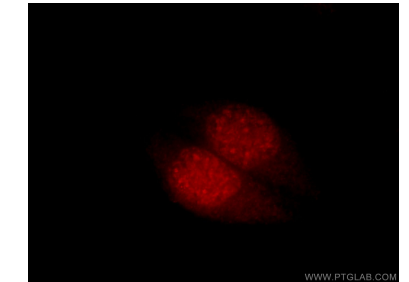
Jurkat cells were subjected to SDS PAGE followed by western blot with 15023-1-AP (CPSF4 antibody) at dilution of 1:300 incubated at room temperature for 1.5 hours.



IP result of anti-CPSF4 (IP:15023-1-AP, 3ug; Detection:15023-1-AP 1:400) with HeLa cells lysate 1000ug.



Immunohistochemical analysis of paraffin-embedded human endometrial cancer using 15023-1-AP (CPSF4 antibody) at dilution of 1:50 (under 40x lens).



Immunofluorescent analysis of HepG2 cells, using CPSF4 antibody 15023-1-AP at 1:50 dilution and Rhodamine-labeled goat anti-rabbit IgG (red).