

For Research Use Only

# IFT27 Polyclonal antibody

Catalog Number: 15017-1-AP

Featured Product

3 Publications



## Basic Information

Catalog Number:

15017-1-AP

Size:

750 µg/ml

Source:

Rabbit

Isotype:

IgG

Immunogen Catalog Number:

AG6967

GenBank Accession Number:

BC000566

GeneID (NCBI):

11020

UNIPROT ID:

Q9BW83

Full Name:

RAB, member of RAS oncogene family-like 4

Calculated MW:

20 kDa

Observed MW:

20 kDa

Purification Method:

Antigen affinity purification

Recommended Dilutions:

WB 1:500-1:1000

IHC 1:20-1:200

IF/ICC 1:10-1:100

## Applications

Tested Applications:

WB, IHC, IF/ICC, ELISA

Cited Applications:

WB

Species Specificity:

human

Cited Species:

human

**Note-IHC: suggested antigen retrieval with TE buffer pH 9.0; (\*) Alternatively, antigen retrieval may be performed with citrate buffer pH 6.0**

Positive Controls:

WB : human RPE cells,

IHC : human brain tissue, human testis tissue

IF/ICC : hTERT-RPE1 cells,

## Background Information

RABL4, also named as IFT27, is a GTP-binding protein that is a core component of the intraflagellar transport complex B. It plays a role in the cargo loading of the retrograde transport machinery.

## Notable Publications

Author	Pubmed ID	Journal	Application
Malavika Raman	26389662	Nat Cell Biol	WB
Zi Gao	36264766	Anal Chem	WB
Tina Beyer	29615496	Mol Cell Proteomics	WB

## Storage

Storage:

Store at -20°C. Stable for one year after shipment.

Storage Buffer:

PBS with 0.02% sodium azide and 50% glycerol pH 7.3.

Aliquoting is unnecessary for -20°C storage

For technical support and original validation data for this product please contact:

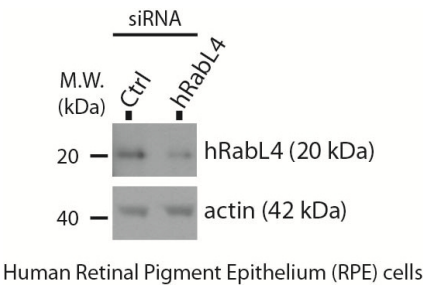
T: 4006900926

E: [Proteintech-CN@ptglab.com](mailto:Proteintech-CN@ptglab.com)

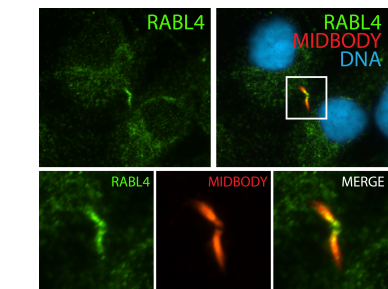
W: [ptgcn.com](http://ptgcn.com)

This product is exclusively available under Proteintech Group brand and is not available to purchase from any other manufacturer.

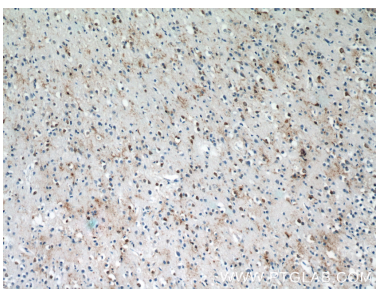
Selected Validation Data



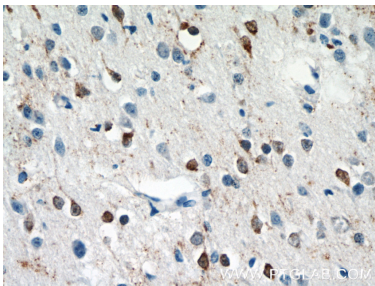
WB result of anti-RABL4 (15017-1-AP) with human RPE cells (siRNA and control) by Dr. Gerald Liew, Maxence Nachury's lab.



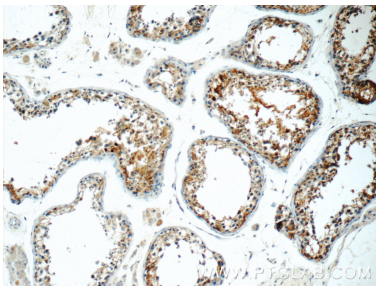
IF result (cytoplasm and the spindle midzone stain) of anti-RABL4 (IFT27, 15017-1-AP, 1:50) with telophase hTERT-RPE1 (MeOH fixed) by Dr. Moshe Kim.



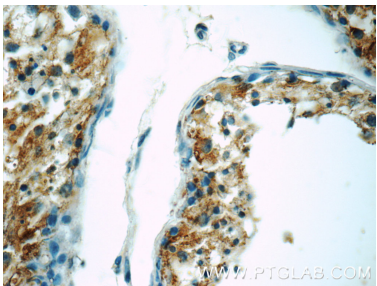
Immunohistochemical analysis of paraffin-embedded human brain tissue slide using 15017-1-AP (IFT27 antibody at dilution of 1:50 (under 10x lens).



Immunohistochemical analysis of paraffin-embedded human brain tissue slide using 15017-1-AP (IFT27 antibody at dilution of 1:50 (under 40x lens).



Immunohistochemical analysis of paraffin-embedded human testis tissue slide using 15017-1-AP (IFT27 antibody at dilution of 1:50 (under 10x lens).



Immunohistochemical analysis of paraffin-embedded human testis tissue slide using 15017-1-AP (IFT27 antibody at dilution of 1:50 (under 40x lens).