

For Research Use Only

ARIH2 Polyclonal antibody, PBS Only

Catalog Number: 15006-1-PBS

Featured Product



Basic Information

Catalog Number:

15006-1-PBS

Concentration:

1 mg/ml

Source:

Rabbit

Isotype:

IgG

Immunogen Catalog Number:

AG6507

GenBank Accession Number:

BC000422

GeneID (NCBI):

10425

UNIPROT ID:

O95376

Full Name:

ariadne homolog 2 (Drosophila)

Calculated MW:

58 kDa

Observed MW:

59 kDa

Purification Method:

Antigen affinity purification

Applications

Tested Applications:

WB, IF/ICC, IP, Indirect ELISA

Species Specificity:

human, mouse, rat

Background Information

ARIH2 (Protein ariadne-2 homolog) is also named as ARI2, TRIAD1 and belongs to the RBR family and ariadne subfamily. It mediates 'Lys-48'- and 'Lys-63'-linked polyubiquitination and subsequent proteasomal degradation of modified proteins.

Storage

Storage:

Store at -80°C.

The product is shipped with ice packs. Upon receipt, store it immediately at -80°C

Storage Buffer:

PBS only, pH7.3

For technical support and original validation data for this product please contact:

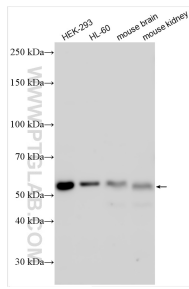
T: 4006900926

E: Proteintech-CN@ptglab.com

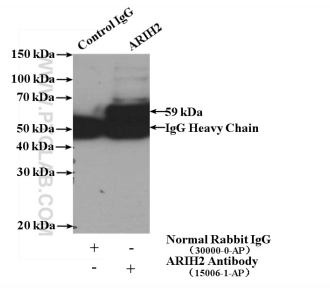
W: ptgcn.com

This product is exclusively available under Proteintech Group brand and is not available to purchase from any other manufacturer.

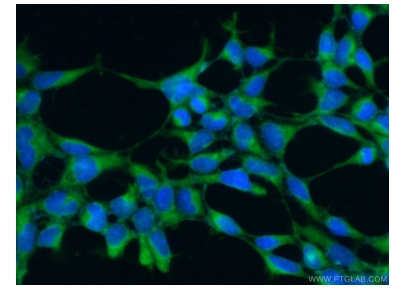
Selected Validation Data



Various lysates were subjected to SDS PAGE followed by western blot with 15006-1-AP (ARIH2 antibody) at dilution of 1:2000 incubated at room temperature for 1.5 hours. This data was developed using the same antibody clone with 15006-1-PBS in a different storage buffer formulation.



IP result of anti-ARIH2 (IP:15006-1-AP, 4ug; Detection:15006-1-AP 1:500) with HeLa cells lysate 1200ug. This data was developed using the same antibody clone with 15006-1-PBS in a different storage buffer formulation.



Immunofluorescent analysis of (-20°C Ethanol) fixed HEK-293 cells using 15006-1-AP (ARIH2 antibody) at dilution of 1:50 and Alexa Fluor 488-conjugated AffiniPure Goat Anti-Rabbit IgG(H+L). This data was developed using the same antibody clone with 15006-1-PBS in a different storage buffer formulation.