

For Research Use Only

# ARIH2 Polyclonal antibody

Catalog Number: 15006-1-AP

Featured Product

3 Publications



## Basic Information

### Catalog Number:

15006-1-AP

### Size:

260 µg/ml

### Source:

Rabbit

### Isotype:

IgG

### Immunogen Catalog Number:

AG6507

### GenBank Accession Number:

BC000422

### GeneID (NCBI):

10425

### UNIPROT ID:

O95376

### Full Name:

ariadne homolog 2 (Drosophila)

### Calculated MW:

58 kDa

### Observed MW:

59 kDa

### Purification Method:

Antigen affinity purification

### Recommended Dilutions:

WB 1:1000-1:4000

IP 0.5-4.0 µg for 1.0-3.0 mg of total protein lysate

IF/ICC 1:20-1:200

## Applications

### Tested Applications:

WB, IF/ICC, IP, ELISA

### Cited Applications:

WB, IHC, IP

### Species Specificity:

human, mouse, rat

### Cited Species:

human, mouse

### Positive Controls:

WB : HEK-293 cells, HL-60 cells, mouse brain tissue, mouse kidney tissue

IP : HeLa cells,

IF/ICC : HEK-293 cells,

## Background Information

ARIH2 (Protein ariadne-2 homolog) is also named as ARI2, TRIAD1 and belongs to the RBR family and ariadne subfamily. It mediates 'Lys-48'- and 'Lys-63'-linked polyubiquitination and subsequent proteasomal degradation of modified proteins.

## Notable Publications

Author	Pubmed ID	Journal	Application
Shengjun Geng	35732617	Cell Death Dis	WB, IHC, IP
Hao Wang	29459712	Oncogene	WB
Lin Amy E AE	23179078	Nat Immunol	WB, IP

## Storage

### Storage:

Store at -20°C. Stable for one year after shipment.

### Storage Buffer:

PBS with 0.02% sodium azide and 50% glycerol pH 7.3.

Aliquoting is unnecessary for -20°C storage

For technical support and original validation data for this product please contact:

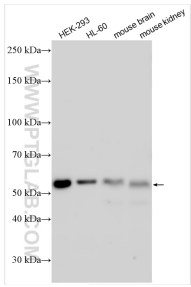
T: 4006900926

E: [Proteintech-CN@ptglab.com](mailto:Proteintech-CN@ptglab.com)

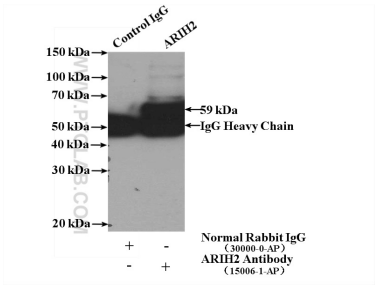
W: [ptgcn.com](http://ptgcn.com)

This product is exclusively available under Proteintech Group brand and is not available to purchase from any other manufacturer.

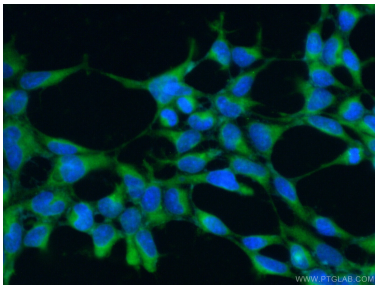
Selected Validation Data



Various lysates were subjected to SDS PAGE followed by western blot with 15006-1-AP (ARIH2 antibody) at dilution of 1:2000 incubated at room temperature for 1.5 hours.



IP result of anti-ARIH2 (IP:15006-1-AP, 4ug; Detection:15006-1-AP 1:500) with HeLa cells lysate 1200ug.



Immunofluorescent analysis of (-20℃ Ethanol) fixed HEK-293 cells using 15006-1-AP (ARIH2 antibody) at dilution of 1:50 and Alexa Fluor 488-conjugated AffiniPure Goat Anti-Rabbit IgG(H+L).