

For Research Use Only

PDCL3 Polyclonal antibody

Catalog Number: 14997-1-AP

1 Publications



Basic Information

Catalog Number:

14997-1-AP

Size:

200 ug/ml

Source:

Rabbit

Isotype:

IgG

Immunogen Catalog Number:

AG6983

GenBank Accession Number:

BC001021

GeneID (NCBI):

79031

UNIPROT ID:

Q9H2J4

Full Name:

phosducin-like 3

Calculated MW:

28 kDa

Observed MW:

35 kDa

Purification Method:

Antigen affinity purification

Recommended Dilutions:

WB 1:500-1:3000

IF/ICC 1:200-1:800

Applications

Tested Applications:

WB, IF/ICC, ELISA

Cited Applications:

WB, IHC

Species Specificity:

human, mouse

Cited Species:

human

Positive Controls:

WB : A2780 cells, COLO 320 cells, MCF-7 cells

IF/ICC : HepG2 cells, MCF-7 cells, HeLa cells

Background Information

Notable Publications

Author	Pubmed ID	Journal	Application
Wenzhi Jin	38494503	Eur J Med Res	WB,IHC

Storage

Storage:

Store at -20°C. Stable for one year after shipment.

Storage Buffer:

PBS with 0.02% sodium azide and 50% glycerol pH 7.3.

Aliquoting is unnecessary for -20°C storage

For technical support and original validation data for this product please contact:

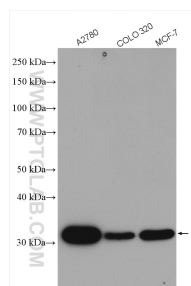
T: 4006900926

E: Proteintech-CN@ptglab.com

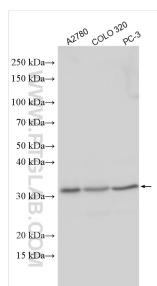
W: ptgcn.com

This product is exclusively available under Proteintech Group brand and is not available to purchase from any other manufacturer.

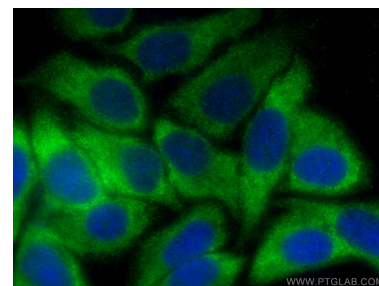
Selected Validation Data



Various lysates were subjected to SDS PAGE followed by western blot with 14997-1-AP (PDCL3 antibody) at dilution of 1:1500 incubated at room temperature for 1.5 hours.



Various lysates were subjected to SDS PAGE followed by western blot with 14997-1-AP (PDCL3 antibody) at dilution of 1:3000 incubated at room temperature for 1.5 hours.



Immunofluorescent analysis of (-20°C Ethanol) fixed HepG2 cells using PDCL3 antibody (14997-1-AP) at dilution of 1:400 and CoraLite®488-Conjugated AffiniPure Goat Anti-Rabbit IgG(H+L).