

For Research Use Only

METTL1 Polyclonal antibody

Catalog Number: 14994-1-AP

Featured Product

26 Publications



Basic Information

Catalog Number:

14994-1-AP

Size:

600 ug/ml

Source:

Rabbit

Isotype:

IgG

Immunogen Catalog Number:

AG6980

GenBank Accession Number:

BC000550

GeneID (NCBI):

4234

UNIPROT ID:

Q9UBP6

Full Name:

methyltransferase like 1

Calculated MW:

31 kDa

Observed MW:

31 kDa

Purification Method:

Antigen affinity purification

Recommended Dilutions:

WB 1:1000-1:4000

IP 0.5-4.0 ug for 1.0-3.0 mg of total protein lysate

IHC 1:1000-1:4000

IF/ICC 1:50-1:500

Applications

Tested Applications:

WB, IHC, IF/ICC, IP, ELISA

Cited Applications:

WB, IHC, IF

Species Specificity:

human, mouse, rat

Cited Species:

human, mouse

Note-IHC: suggested antigen retrieval with TE buffer pH 9.0; (*) Alternatively, antigen retrieval may be performed with citrate buffer pH 6.0

Positive Controls:

WB: A549 cells, HuH-7 cells, HeLa cells, rat brain tissue, mouse brain tissue

IP: A2780 cells,

IHC: human liver cancer tissue,

IF/ICC: HepG2 cells,

Background Information

METTL1 methyltransferase mediates m7G methylation within miRNAs and regulates cell migration via its catalytic activity. METTL1 can be inactivated by phosphorylation at Ser27 by protein kinase B (PKB α). Overexpression of METTL1 is widely observed among human cancers. It is also crucial for the regulation of chemoresistance in cancer treatment. In addition, mutations in the human N7-methylguanosine (m7G) methyltransferase complex METTL1/WDR4 cause primordial dwarfism and brain malformation.

Notable Publications

Author	Pubmed ID	Journal	Application
Lionel Malbec	31520064	Cell Res	WB
Ying Huang	36071474	Biomark Res	WB, IHC
Mayumi Okamoto	25233213	PLoS Genet	WB

Storage

Storage:

Store at -20°C. Stable for one year after shipment.

Storage Buffer:

PBS with 0.02% sodium azide and 50% glycerol pH 7.3.

Aliquoting is unnecessary for -20°C storage

For technical support and original validation data for this product please contact:

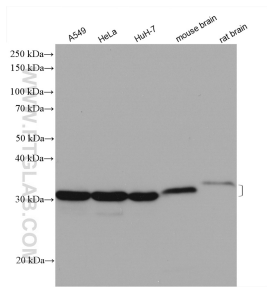
T: 4006900926

E: Proteintech-CN@ptglab.com

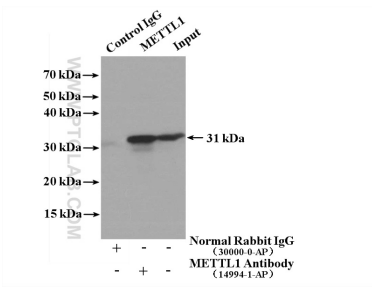
W: ptgcn.com

This product is exclusively available under Proteintech Group brand and is not available to purchase from any other manufacturer.

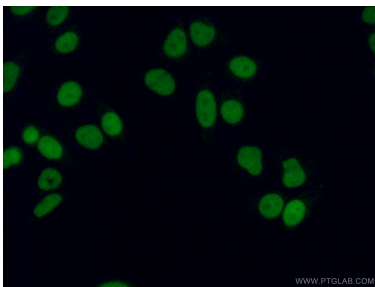
Selected Validation Data



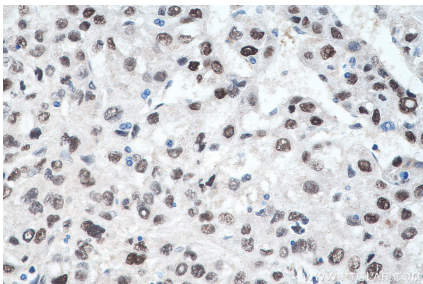
Various lysates were subjected to SDS PAGE followed by western blot with 14994-1-AP (METTL1 antibody) at dilution of 1:2000 incubated at room temperature for 1.5 hours.



IP result of anti-METTL1 (IP:14994-1-AP, 4ug; Detection:14994-1-AP 1:300) with A2780 cells lysate 3600 ug.



Immunofluorescent analysis of (4% PFA) fixed HepG2 cells using 14994-1-AP (METTL1 antibody) at dilution of 1:50 and Alexa Fluor 488-conjugated Goat Anti-Rabbit IgG(H+L).



Immunohistochemical analysis of paraffin-embedded human liver cancer tissue slide using 14994-1-AP (METTL1 antibody) at dilution of 1:2000 (under 40x lens). Heat mediated antigen retrieval with Tris-EDTA buffer (pH 9.0).