

# RPL27 Polyclonal antibody

Catalog Number: 14980-1-AP

7 Publications

## Basic Information

## Catalog Number:

14980-1-AP

## Size:

450 µg/ml

## Source:

Rabbit

## Isotype:

IgG

## Immunogen Catalog Number:

AG6893

## GenBank Accession Number:

BC001700

## GeneID (NCBI):

6155

## UNIPROT ID:

P61353

## Full Name:

ribosomal protein L27

## Calculated MW:

16 kDa

## Observed MW:

18 kDa

## Purification Method:

Antigen affinity purification

## Recommended Dilutions:

WB 1:500-1:1000

IHC 1:20-1:200

## Applications

## Tested Applications:

IHC, WB, ELISA

## Cited Applications:

WB, IF, IHC

## Species Specificity:

human, mouse, rat

## Cited Species:

human, rat, mouse

**Note-IHC: suggested antigen retrieval with TE buffer pH 9.0; (\*) Alternatively, antigen retrieval may be performed with citrate buffer pH 6.0**

## Positive Controls:

WB : mouse liver tissue, human liver tissue

IHC : human liver cancer tissue,

## Background Information

RPL27, also named as 60S ribosomal protein L27, is a 136 amino acid protein, which contains one KOW domain and belongs to the ribosomal protein L27e family. The function of RPL27 is still non-known. RPL27 may play a role in protein translation. Like most ribosomal proteins, Ribosomal Protein L27 exists as multiple processed pseudogenes that are scattered throughout the genome.

## Notable Publications

Author	Pubmed ID	Journal	Application
Muhammad U Cheema	24303148	Physiol Rep	WB
Zhenyuan Wei	35615641	J Orthop Translat	WB, IHC
James P Hewitson	30833344	EMBO Rep	WB

## Storage

## Storage:

Store at -20°C. Stable for one year after shipment.

## Storage Buffer:

PBS with 0.02% sodium azide and 50% glycerol pH 7.3.

Aliquoting is unnecessary for -20°C storage

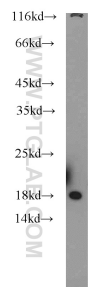
For technical support and original validation data for this product please contact:

T: 4006900926

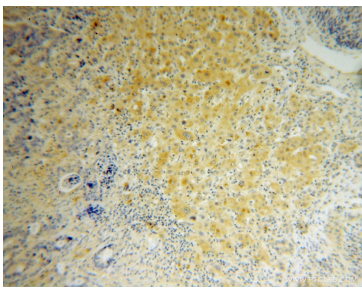
E: [Proteintech-CN@ptglab.com](mailto:Proteintech-CN@ptglab.com)W: [ptgcn.com](http://ptgcn.com)

This product is exclusively available under Proteintech Group brand and is not available to purchase from any other manufacturer.

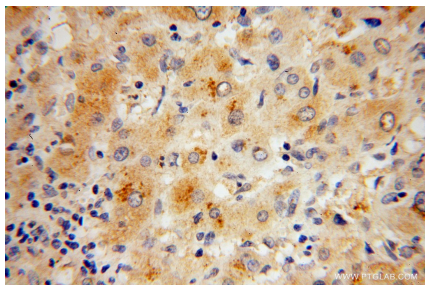
# Selected Validation Data



mouse liver tissue were subjected to SDS PAGE followed by western blot with 14980-1-AP (RPL27 antibody) at dilution of 1:500 incubated at room temperature for 1.5 hours.



Immunohistochemical analysis of paraffin-embedded human liver cancer using 14980-1-AP (RPL27 antibody) at dilution of 1:100 (under 10x lens).



Immunohistochemical analysis of paraffin-embedded human liver cancer using 14980-1-AP (RPL27 antibody) at dilution of 1:100 (under 40x lens).