

For Research Use Only

# SNRPF Polyclonal antibody

Catalog Number: 14977-1-AP

1 Publications



## Basic Information

Catalog Number:

14977-1-AP

Source:

Rabbit

Isotype:

IgG

Immunogen Catalog Number:

AG6889

GenBank Accession Number:

BC002505

GeneID (NCBI):

6636

UNIPROT ID:

P62306

Full Name:

small nuclear ribonucleoprotein polypeptide F

Calculated MW:

10 kDa

Observed MW:

10 kDa

Purification Method:

Antigen affinity purification

Recommended Dilutions:

WB: 1:500-1:3000

IHC: 1:20-1:200

IF/ICC: 1:50-1:500

## Applications

Tested Applications:

WB, IHC, IF/ICC, ELISA

Cited Applications:

WB

Species Specificity:

human, mouse, rat

Cited Species:

human

**Note-IHC: suggested antigen retrieval with TE buffer pH 9.0; (\*) Alternatively, antigen retrieval may be performed with citrate buffer pH 6.0**

Positive Controls:

WB : human heart tissue, HeLa cells, HepG2 cells, MCF-7 cells, mouse kidney tissue, mouse liver tissue

IHC : human breast cancer tissue,

IF/ICC : HeLa cells,

## Background Information

The 4 major small nuclear ribonucleoprotein particles (snRNPs), U1, U2, U4/U6, and U5, are essential components of the eukaryotic pre-mRNA splicing machinery. These snRNPs share 8 proteins which form the snRNP structural core: B/B-prime (SNRPB), D1 (SNRPD1), D2 (SNRPD2), D3 (SNRPD3), E (SNRPE), F (SNRPF), and G (SNRPG). These proteins have a role in the biogenesis of the snRNPs.

## Notable Publications

Author	Pubmed ID	Journal	Application
Joseph D DeAngelo	41086806	Mol Cell	WB

## Storage

Storage:

Store at -20°C. Stable for one year after shipment.

Storage Buffer:

PBS with 0.02% sodium azide and 50% glycerol, pH7.3

Aliquoting is unnecessary for -20°C storage

For technical support and original validation data for this product please contact:

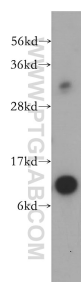
T: 4006900926

E: [Proteintech-CN@ptglab.com](mailto:Proteintech-CN@ptglab.com)

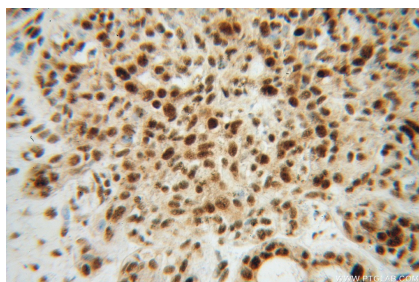
W: [ptgcn.com](http://ptgcn.com)

This product is exclusively available under Proteintech Group brand and is not available to purchase from any other manufacturer.

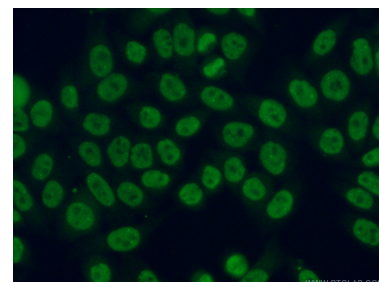
## Selected Validation Data



human heart tissue were subjected to SDS PAGE followed by western blot with 14977-1-AP (SNRPF antibody) at dilution of 1:500 incubated at room temperature for 1.5 hours.



Immunohistochemical analysis of paraffin-embedded human breast cancer using 14977-1-AP (SNRPF antibody) at dilution of 1:100 (under 40x lens).



Immunofluorescent analysis of (4% PFA) fixed HeLa cells using 14977-1-AP (SNRPF antibody) at dilution of 1:50 and Alexa Fluor 488-conjugated AffiniPure Goat Anti-Rabbit IgG(H+L).