

For Research Use Only

KATNB1 Polyclonal antibody

Catalog Number: 14969-1-AP

Featured Product

11 Publications



Basic Information

Catalog Number:

14969-1-AP

Size:

450 µg/ml

Source:

Rabbit

Isotype:

IgG

Immunogen Catalog Number:

AG6836

GenBank Accession Number:

BC001353

GeneID (NCBI):

10300

UNIPROT ID:

Q9BVA0

Full Name:

katanin p80 (WD repeat containing)

subunit B 1

Calculated MW:

72 kDa

Observed MW:

72-80 kDa

Purification Method:

Antigen affinity purification

Recommended Dilutions:

WB 1:1000-1:6000

IP 0.5-4.0 µg for 1.0-3.0 mg of total

protein lysate

IF 1:50-1:500

Applications

Tested Applications:

IF/ICC, IP, WB, ELISA

Cited Applications:

IF, WB

Species Specificity:

human, mouse, rat

Cited Species:

human, mouse

Positive Controls:

WB: A431 cells, mouse skeletal muscle tissue, HepG2 cells

IP: HeLa cells,

IF: HeLa cells,

Background Information

Katanin p80 WD40-containing subunit B1 is a protein that in humans is encoded by the KATNB1 gene. Microtubules, polymers of alpha and beta tubulin subunits, form the mitotic spindle of a dividing cell and help to organize membranous organelles during interphase. Katanin is a heterodimer that consists of a 60 kDa ATPase (p60 subunit A 1) and an 80 kDa accessory protein (p80 subunit B 1). The p60 subunit acts to sever and disassemble microtubules, while the p80 subunit targets the enzyme to the centrosome. Katanin is a member of the AAA family of ATPases.

Notable Publications

Author	Pubmed ID	Journal	Application
Michael D Chua	31595676	Anat Rec (Hoboken)	
Michael Dominic Chua	30415487	Cell Microbiol	IF
Feng Gao	31185410	Eur J Med Chem	WB

Storage

Storage:

Store at -20°C. Stable for one year after shipment.

Storage Buffer:

PBS with 0.02% sodium azide and 50% glycerol pH 7.3.

Aliquoting is unnecessary for -20°C storage

For technical support and original validation data for this product please contact:

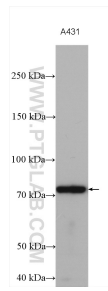
T: 4006900926

E: Proteintech-CN@ptglab.com

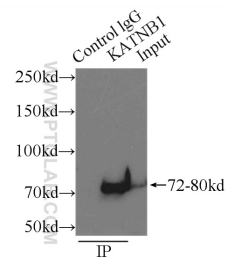
W: ptgcn.com

This product is exclusively available under Proteintech Group brand and is not available to purchase from any other manufacturer.

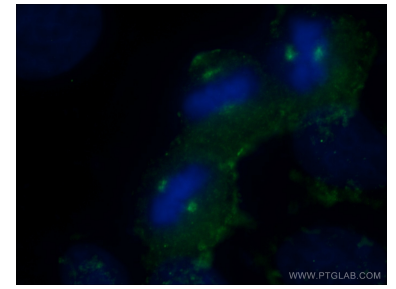
Selected Validation Data



A431 cells were subjected to SDS PAGE followed by western blot with 14969-1-AP (KATNB1 antibody) at dilution of 1:3000 incubated at room temperature for 1.5 hours.



IP result of anti-KATNB1 (IP:14969-1-AP, 3ug; Detection:14969-1-AP 1:500) with HeLa cells lysate 3000ug.



Immunofluorescent analysis of (-20°C Ethanol) fixed HeLa cells using 14969-1-AP (KATNB1 antibody) at dilution of 1:50 and Alexa Fluor 488-conjugated AffiniPure Goat Anti-Rabbit IgG(H+L).