

For Research Use Only

# DDAH2 Polyclonal antibody, PBS Only

Catalog Number: 14966-1-PBS

Featured Product



## Basic Information

Catalog Number:

14966-1-PBS

Source:

Rabbit

Isotype:

IgG

Immunogen Catalog Number:

AG6831

GenBank Accession Number:

BC001435

GeneID (NCBI):

23564

UNIPROT ID:

O95865

Full Name:

dimethylarginine

dimethylaminohydrolase 2

Calculated MW:

29 kDa

Observed MW:

30 kDa

Purification Method:

Antigen affinity purification

## Applications

Tested Applications:

WB, IHC, IP, Indirect ELISA

Species Specificity:

human, mouse, rat

## Background Information

The DDAH family of proteins is formed by two isoforms, DDAH-1 and DDAH-2, both of which utilize ADMA as their substrate and increase NOS activity. DDAH-2, also named as DDAH, G6A, NG30, is the most prevalent isoform in blood vessels and endothelium and is important for embryonic development. It has also been linked to other diseases, such as hypertension, cerebral hemorrhage, cardiac disease, and diabetes. In cultured human endothelial cells, DDAH-2 had been found only in the cytosol, but in the nuclei of rat vascular smooth muscle cells. (PMID:21898353).

## Storage

Storage:

Store at -80°C.

**The product is shipped with ice packs. Upon receipt, store it immediately at -80°C**

Storage Buffer:

PBS only, pH7.3

For technical support and original validation data for this product please contact:

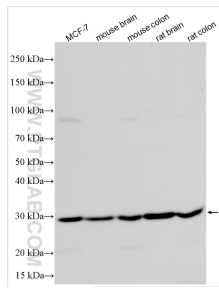
T: 4006900926

E: [Proteintech-CN@ptglab.com](mailto:Proteintech-CN@ptglab.com)

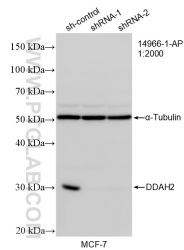
W: [ptgcn.com](http://ptgcn.com)

**This product is exclusively available under Proteintech Group brand and is not available to purchase from any other manufacturer.**

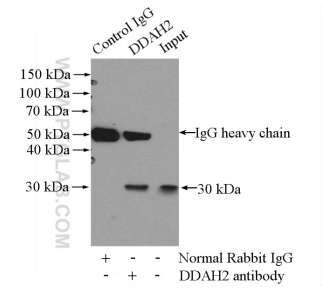
## Selected Validation Data



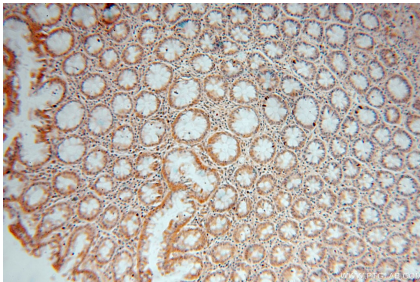
Various lysates were subjected to SDS PAGE followed by western blot with 14966-1-AP (DDAH2 antibody) at dilution of 1:6000 incubated at room temperature for 1.5 hours. This data was developed using the same antibody clone with 14966-1-PBS in a different storage buffer formulation.



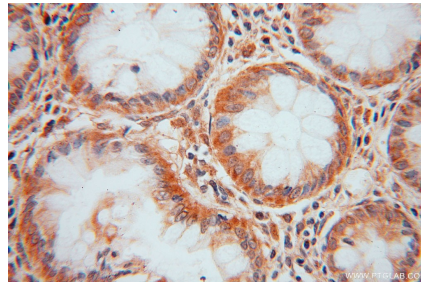
WB result of DDAH2 antibody (14966-1-AP; 1:2000; incubated at room temperature for 1.5 hours) with sh-Control and sh-DDAH2 transfected MCF-7 cells. This data was developed using the same antibody clone with 14966-1-PBS in a different storage buffer formulation.



IP result of anti-DDAH2 (IP:14966-1-AP, 3ug; Detection:14966-1-AP 1:500) with COLO 320 cells lysate 2000ug. This data was developed using the same antibody clone with 14966-1-PBS in a different storage buffer formulation.



Immunohistochemical analysis of paraffin-embedded human colon cancer using 14966-1-AP (DDAH2 antibody) at dilution of 1:50 (under 10x lens). This data was developed using the same antibody clone with 14966-1-PBS in a different storage buffer formulation.



Immunohistochemical analysis of paraffin-embedded human colon cancer using 14966-1-AP (DDAH2 antibody) at dilution of 1:50 (under 40x lens). This data was developed using the same antibody clone with 14966-1-PBS in a different storage buffer formulation.