

For Research Use Only

SERPINB6 Polyclonal antibody

Catalog Number: 14962-1-AP

Featured Product

5 Publications



Basic Information

Catalog Number:

14962-1-AP

Concentration:

1000 ug/ml

Source:

Rabbit

Isotype:

IgG

Immunogen Catalog Number:

AG6824

GenBank Accession Number:

BC001394

GeneID (NCBI):

5269

UNIPROT ID:

P35237

Full Name:

serpin peptidase inhibitor, clade B (ovalbumin), member 6

Calculated MW:

43 kDa

Observed MW:

42 kDa

Purification Method:

Antigen affinity purification

Recommended Dilutions:

WB 1:2000-1:18000

IP 0.5-4.0 ug for 1.0-3.0 mg of total protein lysate

IHC 1:20-1:200

IF/ICC 1:50-1:500

Applications

Tested Applications:

WB, IHC, IF/ICC, IP, ELISA

Cited Applications:

WB, IHC

Species Specificity:

human, mouse

Cited Species:

human, mouse

Note-IHC: suggested antigen retrieval with TE buffer pH 9.0; (*) Alternatively, antigen retrieval may be performed with citrate buffer pH 6.0

Positive Controls:

WB : HeLa cells, human placenta tissue, mouse skeletal muscle tissue, HepG2 cells, MCF-7 cells

IP : human placenta tissue,

IHC : human skeletal muscle tissue,

IF/ICC : HeLa cells,

Background Information

Notable Publications

Author	Pubmed ID	Journal	Application
Flora Cozzolino	32886703	PLoS One	WB
Yu-Jie Zhou	36216310	Cell Mol Gastroenterol Hepatol	WB, IHC
Hiroki Nakata	28455723	Cell Tissue Res	WB

Storage

Storage:

Store at -20°C. Stable for one year after shipment.

Storage Buffer:

PBS with 0.02% sodium azide and 50% glycerol pH 7.3.

Aliquoting is unnecessary for -20°C storage

For technical support and original validation data for this product please contact:

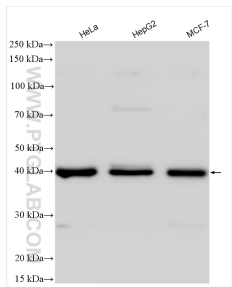
T: 4006900926

E: Proteintech-CN@ptglab.com

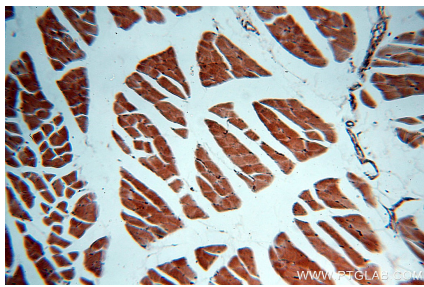
W: ptgcn.com

This product is exclusively available under Proteintech Group brand and is not available to purchase from any other manufacturer.

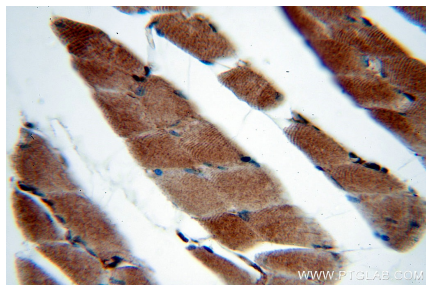
Selected Validation Data



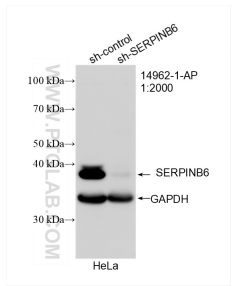
Various lysates were subjected to SDS PAGE followed by western blot with 14962-1-AP (SERPINB6 antibody) at dilution of 1:9000 incubated at room temperature for 1.5 hours.



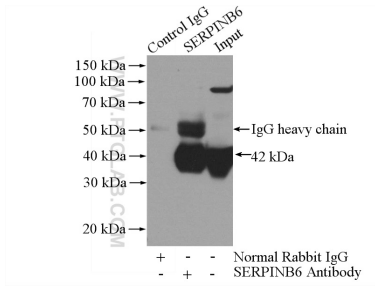
Immunohistochemical analysis of paraffin-embedded human skeletal muscle using 14962-1-AP (SERPINB6 antibody) at dilution of 1:50 (under 10x lens).



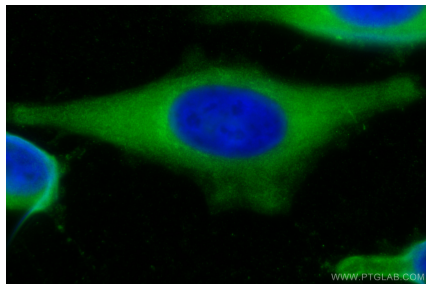
Immunohistochemical analysis of paraffin-embedded human skeletal muscle using 14962-1-AP (SERPINB6 antibody) at dilution of 1:50 (under 40x lens).



WB result of SERPINB6 antibody (14962-1-AP; 1:2000; incubated at room temperature for 1.5 hours) with sh-Control and sh-SERPINB6 transfected HeLa cells.



IP result of anti-SERPINB6 (IP:14962-1-AP, 4ug; Detection:14962-1-AP 1:500) with human placenta tissue lysate 1520ug.



Immunofluorescent analysis of (-20°C Methanol) fixed HeLa cells using SERPINB6 antibody (14962-1-AP) at dilution of 1:200 and CoraLite®488-Conjugated AffiniPure Goat Anti-Rabbit IgG(H+L).