

For Research Use Only

# RBM8A,Y14 Polyclonal antibody

Catalog Number: 14958-1-AP

Featured Product

4 Publications



## Basic Information

**Catalog Number:**

14958-1-AP

**Size:**

850 µg/ml

**Source:**

Rabbit

**Isotype:**

IgG

**Immunogen Catalog Number:**

AG6800

**GenBank Accession Number:**

BC017088

**GeneID (NCBI):**

9939

**UNIPROT ID:**

Q9Y5S9

**Full Name:**

RNA binding motif protein 8A

**Calculated MW:**

20 kDa

**Observed MW:**

24 kDa

**Purification Method:**

Antigen affinity purification

**Recommended Dilutions:**

WB 1:500-1:3000

IP 0.5-4.0 µg for 1.0-3.0 mg of total protein lysate

IHC 1:50-1:500

IF 1:50-1:500

## Applications

**Tested Applications:**

IF/ICC, IHC, IP, WB, ELISA

**Cited Applications:**

IF, IHC, WB

**Species Specificity:**

human, mouse, rat

**Cited Species:**

human, mouse

**Note-IHC: suggested antigen retrieval with TE buffer pH 9.0; (\*) Alternatively, antigen retrieval may be performed with citrate buffer pH 6.0**

**Positive Controls:**

**WB:** HEK-293T cells, Jurkat cells, HeLa cells, MDA-MB-453s cells

**IP:** HeLa cells,

**IHC:** human brain tissue, human spleen tissue, human testis tissue, human ovary tissue

**IF:** HeLa cells,

## Background Information

### Notable Publications

Author	Pubmed ID	Journal	Application
Yan Lin	34804926	Front Oncol	WB,IHC
Xiaojin Song	35568705	Cell Death Discov	WB
Mi Kyung Park	34879239	Cell Metab	WB

## Storage

**Storage:**

Store at -20°C. Stable for one year after shipment.

**Storage Buffer:**

PBS with 0.02% sodium azide and 50% glycerol pH 7.3.

Aliquoting is unnecessary for -20°C storage

For technical support and original validation data for this product please contact:

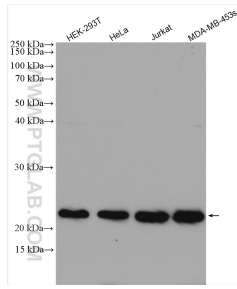
T: 4006900926

E: Proteintech-CN@ptglab.com

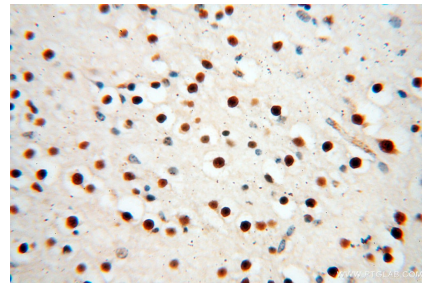
W: ptgcn.com

**This product is exclusively available under Proteintech Group brand and is not available to purchase from any other manufacturer.**

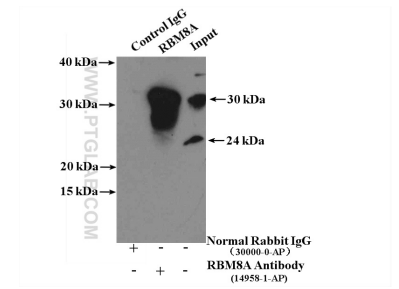
## Selected Validation Data



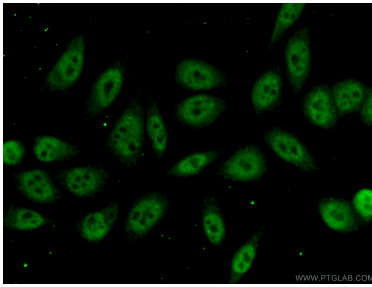
Various lysates were subjected to SDS PAGE followed by western blot with 14958-1-AP (RBM8A,Y14 antibody) at dilution of 1:1500 incubated at room temperature for 1.5 hours.



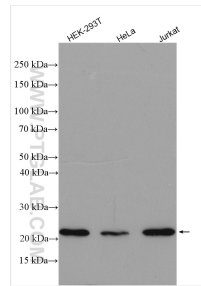
Immunohistochemical analysis of paraffin-embedded human brain using 14958-1-AP (RBM8A,Y14 antibody) at dilution of 1:100 (under 40x lens).



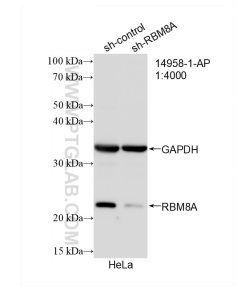
IP result of anti-RBM8A,Y14 (IP:14958-1-AP, 4ug; Detection:14958-1-AP 1:500) with HeLa cells lysate 3200ug.



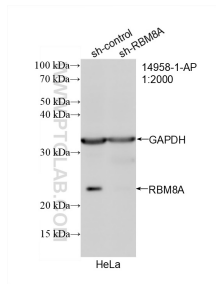
Immunofluorescent analysis of (10% Formaldehyde) fixed HeLa cells using 14958-1-AP (RBM8A,Y14 antibody) at dilution of 1:50 and Alexa Fluor 488-conjugated AffiniPure Goat Anti-Rabbit IgG(H+L).



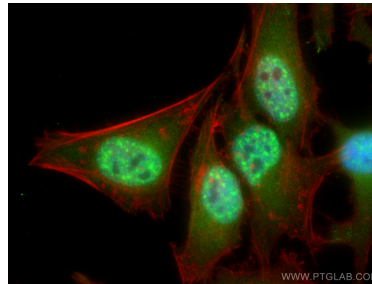
Various lysates were subjected to SDS PAGE followed by western blot with 14958-1-AP (RBM8A,Y14 antibody) at dilution of 1:3000 incubated at room temperature for 1.5 hours.



WB result of RBM8A,Y14 antibody (14958-1-AP; 1:4000; incubated at room temperature for 1.5 hours) with sh-Control and sh-RBM8A,Y14 transfected HeLa cells.



WB result of RBM8A,Y14 antibody (14958-1-AP; 1:2000; incubated at room temperature for 1.5 hours) with sh-Control and sh-RBM8A,Y14 transfected HeLa cells.



Immunofluorescent analysis of (4% PFA) fixed HeLa cells using RBM8A,Y14 antibody (14958-1-AP) at dilution of 1:400 and CoraLite@488-Conjugated AffiniPure Goat Anti-Rabbit IgG(H+L), CL594-phalloidin (red).