

For Research Use Only

# RPS27A Polyclonal antibody, PBS Only

Catalog Number: 14946-1-PBS



## Basic Information

Catalog Number:

14946-1-PBS

Source:

Rabbit

Isotype:

IgG

Immunogen Catalog Number:

AG6750

GenBank Accession Number:

BC001392

GeneID (NCBI):

6233

UNIPROT ID:

P62979

Full Name:

ribosomal protein S27a

Calculated MW:

18 kDa

Observed MW:

9 kDa, 18 kDa

Purification Method:

Antigen affinity purification

## Applications

Tested Applications:

WB, IHC, IF/ICC, FC (Intra), Indirect ELISA

Species Specificity:

human, mouse

## Background Information

RPS27A, also named as UBA80 and UBCEP1, can be cleaved into two chains Ubiquitin and 40S ribosomal protein S27a. Ubiquitin is a highly conserved 76-amino acid protein that plays a key role in protein degradation. Ubiquitin is synthesized as precursor proteins that consist either of polyubiquitin chains that are cleaved into moieties of the UBB or UBC types, or single ubiquitin moieties fused 5-prime to unrelated carboxyl extension proteins (UBA type) such as UBA52 and UBA80 (RPS27A) [PMID:10772958]

## Storage

Storage:

Store at -80°C.

**The product is shipped with ice packs. Upon receipt, store it immediately at -80°C**

Storage Buffer:

PBS only, pH7.3

For technical support and original validation data for this product please contact:

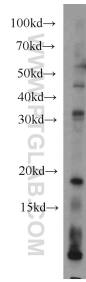
T: 4006900926

E: [Proteintech-CN@ptglab.com](mailto:Proteintech-CN@ptglab.com)

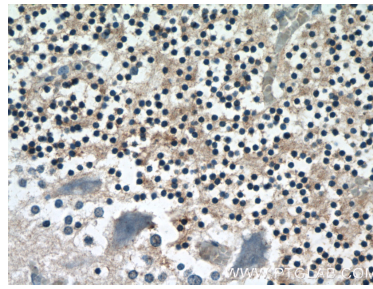
W: [ptgcn.com](http://ptgcn.com)

**This product is exclusively available under Proteintech Group brand and is not available to purchase from any other manufacturer.**

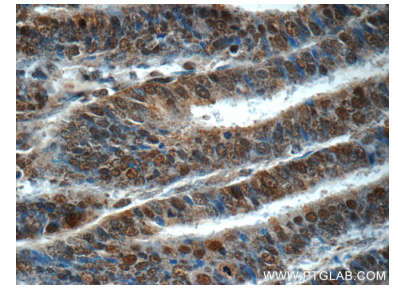
## Selected Validation Data



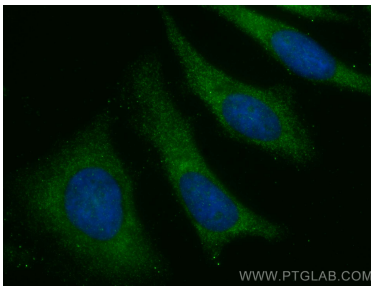
mouse cerebellum tissue were subjected to SDS PAGE followed by western blot with 14946-1-AP (RPS27A antibody) at dilution of 1:300 incubated at room temperature for 1.5 hours. This data was developed using the same antibody clone with 14946-1-PBS in a different storage buffer formulation.



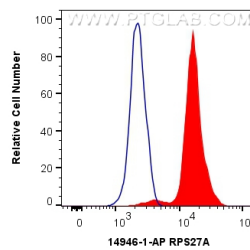
Immunohistochemical analysis of paraffin-embedded human cerebellum tissue slide using 14946-1-AP (RPS27A Antibody) at dilution of 1:50 (under 40x lens). This data was developed using the same antibody clone with 14946-1-PBS in a different storage buffer formulation.



Immunohistochemical analysis of paraffin-embedded human endometrial cancer tissue slide using 14946-1-AP (RPS27A Antibody) at dilution of 1:50 (under 40x lens). This data was developed using the same antibody clone with 14946-1-PBS in a different storage buffer formulation.



Immunofluorescent analysis of (-20°C Methanol) fixed HeLa cells using RPS27A antibody (14946-1-AP) at dilution of 1:200 and CoraLite®488-Conjugated AffiniPure Goat Anti-Rabbit IgG(H+L). This data was developed using the same antibody clone with 14946-1-PBS in a different storage buffer formulation.



1X10<sup>6</sup> HeLa cells were intracellularly stained with 0.4 ug Anti-Human RPS27A (14946-1-AP) and CoraLite®488-Conjugated AffiniPure Goat Anti-Rabbit IgG(H+L) at dilution 1:1000 (red), or 0.4 ug Isotype Control. Cells were fixed with 4% PFA and permeabilized with Flow Cytometry Perm Buffer. This data was developed using the same antibody clone with 14946-1-PBS in a different storage buffer formulation.