

For Research Use Only

GGPS1 Polyclonal antibody

Catalog Number: 14944-1-AP

Featured Product

12 Publications



Basic Information

Catalog Number:

14944-1-AP

Size:

600 µg/ml

Source:

Rabbit

Isotype:

IgG

Immunogen Catalog Number:

AG6745

GenBank Accession Number:

BC067768

GeneID (NCBI):

9453

UNIPROT ID:

O95749

Full Name:

geranylgeranyl diphosphate synthase

1

Calculated MW:

35 kDa

Observed MW:

35 kDa

Purification Method:

Antigen affinity purification

Recommended Dilutions:

WB 1:500-1:1000

IP 0.5-4.0 µg for 1.0-3.0 mg of total protein lysate

IHC 1:20-1:200

Applications

Tested Applications:

WB, IP, IHC, ELISA

Cited Applications:

WB, IHC, IF

Species Specificity:

human, mouse

Cited Species:

human, mouse

Note-IHC: suggested antigen retrieval with TE buffer pH 9.0; (*) Alternatively, antigen retrieval may be performed with citrate buffer pH 6.0

Positive Controls:

WB : mouse brain tissue, human placenta tissue, human testis tissue, mouse bladder tissue, human heart tissue

IP : mouse brain tissue,

IHC : human kidney tissue, human liver tissue, human testis tissue

Background Information

GGPS1 (Geranylgeranyl pyrophosphate synthase) belongs to the FPP/GGPP synthase family and catalyzes the synthesis of GGPP, an important molecule responsible for the C20-prenylation of protein and for the regulation of a nuclear hormone receptor. GGPP synthase purified from bovine brain is reported to be a homo-oligomer (150-195 kDa) with a molecular mass of 37.5 kDa for the monomer. This is consistent with the calculated molecular mass (35 kDa) of mouse and human GGPP synthases (PMID:10101267).

Notable Publications

Author	Pubmed ID	Journal	Application
Dahuan Li	34530204	Int Immunopharmacol	FC
Xiaoxia Wang	29377583	J Cell Mol Med	WB, IHC
Wujian Xu	30652497	Am J Physiol Lung Cell Mol Physiol	IHC, WB

Storage

Storage:

Store at -20°C. Stable for one year after shipment.

Storage Buffer:

PBS with 0.02% sodium azide and 50% glycerol pH 7.3.

Aliquoting is unnecessary for -20°C storage

For technical support and original validation data for this product please contact:

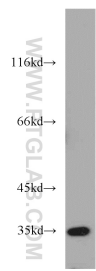
T: 4006900926

E: Proteintech-CN@ptglab.com

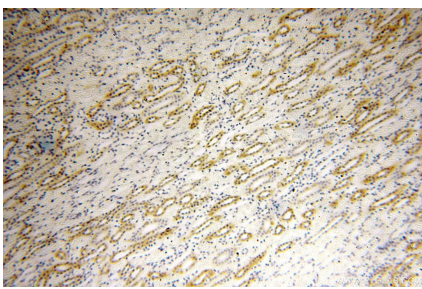
W: ptgcn.com

This product is exclusively available under Proteintech Group brand and is not available to purchase from any other manufacturer.

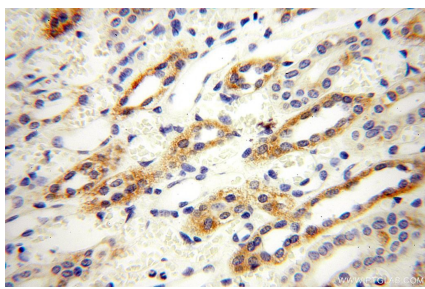
Selected Validation Data



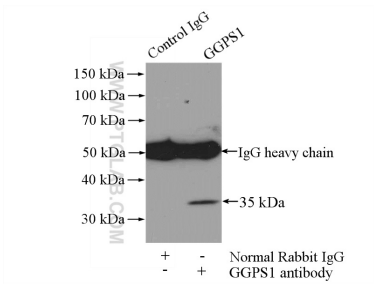
mouse brain tissue were subjected to SDS PAGE followed by western blot with 14944-1-AP (GGPS1 antibody) at dilution of 1:500 incubated at room temperature for 1.5 hours.



Immunohistochemical analysis of paraffin-embedded human kidney using 14944-1-AP (GGPS1 antibody) at dilution of 1:100 (under 10x lens).



Immunohistochemical analysis of paraffin-embedded human kidney using 14944-1-AP (GGPS1 antibody) at dilution of 1:100 (under 40x lens).



IP result of anti-GGPS1 (IP:14944-1-AP, 4ug; Detection:14944-1-AP 1:500) with mouse brain tissue lysate 2640ug.