

For Research Use Only

CLIC2 Polyclonal antibody, PBS Only

Catalog Number:14935-1-PBS



Basic Information

Catalog Number:

14935-1-PBS

Source:

Rabbit

Isotype:

IgG

Immunogen Catalog Number:

AG6766

GenBank Accession Number:

BC005367

GeneID (NCBI):

1193

UNIPROT ID:

O15247

Full Name:

chloride intracellular channel 2

Calculated MW:

28 kDa

Observed MW:

28-30 kDa

Purification Method:

Antigen affinity purification

Applications

Tested Applications:

WB, IHC, Indirect ELISA

Species Specificity:

human

Background Information

CLIC2 (chloride intracellular channel 2), also known as CLCNL2. It is expected to be located in cytoplasm and membrane. CLIC-2 exists as a monomer. It also has an unusual enzyme activity profile. While the CXXC active site motif is conserved between CLIC-2 and the glutaredoxins, no thiol transferase activity was detected. In contrast, low glutathione peroxidase activity was recorded. CLIC-2 was found to be widely distributed in tissues including heart and skeletal muscle. Functional studies showed that CLIC-2 inhibited cardiac ryanodine receptor Ca²⁺ release channels in lipid bilayers when added to the cytoplasmic side of the channels and inhibited Ca²⁺ release from cardiac sarcoplasmic reticulum vesicles. The calculated molecular weight of CLIC2 is 28 kDa.

Storage

Storage:

Store at -80°C.

The product is shipped with ice packs. Upon receipt, store it immediately at -80°C

Storage Buffer:

PBS only, pH7.3

For technical support and original validation data for this product please contact:

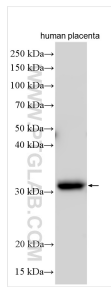
T: 4006900926

E: Proteintech-CN@ptglab.com

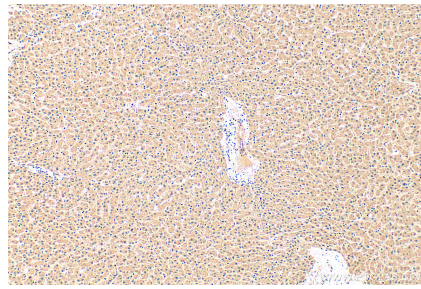
W: ptgcn.com

This product is exclusively available under Proteintech Group brand and is not available to purchase from any other manufacturer.

Selected Validation Data



Various lysates were subjected to SDS PAGE followed by western blot with 14935-1-AP (CLIC2 antibody) at dilution of 1:1000 incubated at room temperature for 1.5 hours. This data was developed using the same antibody clone with 14935-1-PBS in a different storage buffer formulation.



Immunohistochemical analysis of paraffin-embedded human liver tissue slide using 14935-1-AP (CLIC2 antibody) at dilution of 1:200 (under 10x lens). Heat mediated antigen retrieval with Tris-EDTA buffer (pH 9.0). This data was developed using the same antibody clone with 14935-1-PBS in a different storage buffer formulation.