

For Research Use Only

TIM22 Polyclonal antibody, PBS Only

Catalog Number: 14927-1-PBS

Featured Product



Basic Information

Catalog Number:

14927-1-PBS

Source:

Rabbit

Isotype:

IgG

Immunogen Catalog Number:

AG6689

GenBank Accession Number:

BC002324

GeneID (NCBI):

29928

UNIPROT ID:

Q9Y584

Full Name:

translocase of inner mitochondrial membrane 22 homolog (yeast)

Calculated MW:

20 kDa

Observed MW:

20 kDa

Purification Method:

Antigen affinity purification

Applications

Tested Applications:

WB, IHC, IF-P, IP, Indirect ELISA

Species Specificity:

human, mouse, rat

Background Information

TIM22 is a translocase localized in mitochondrial inner membrane. It is implicated in import of nuclear-encoded mitochondrial preproteins to the mitochondria. TIM22 is the essential core of protein insertion complex (TIM22 complex) that consists of TIM22, TIM54, TIM18, and TIM12.

Storage

Storage:

Store at -80°C.

The product is shipped with ice packs. Upon receipt, store it immediately at -80°C

Storage Buffer:

PBS only, pH7.3

For technical support and original validation data for this product please contact:

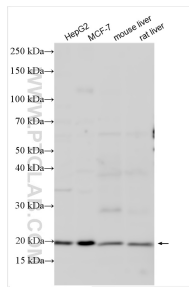
T: 4006900926

E: Proteintech-CN@ptglab.com

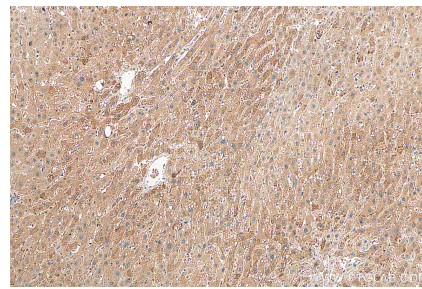
W: ptgcn.com

This product is exclusively available under Proteintech Group brand and is not available to purchase from any other manufacturer.

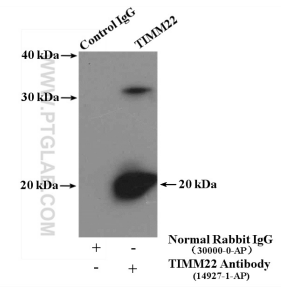
Selected Validation Data



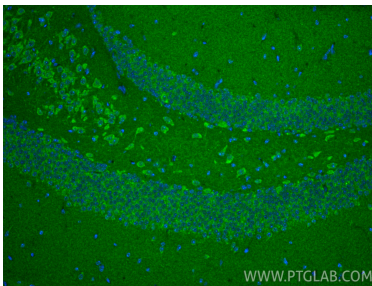
Various lysates were subjected to SDS PAGE followed by western blot with 14927-1-AP (TIM22 antibody) at dilution of 1:4000 incubated at room temperature for 1.5 hours. This data was developed using the same antibody clone with 14927-1-PBS in a different storage buffer formulation.



Immunohistochemical analysis of paraffin-embedded human liver tissue slide using 14927-1-AP (TIM22 antibody) at dilution of 1:200 (under 10x lens). Heat mediated antigen retrieval with Tris-EDTA buffer (pH 9.0). This data was developed using the same antibody clone with 14927-1-PBS in a different storage buffer formulation.



IP result of anti-TIM22 (IP:14927-1-AP, 4ug; Detection:14927-1-AP 1:1000) with mouse liver tissue lysate 4000ug. This data was developed using the same antibody clone with 14927-1-PBS in a different storage buffer formulation.



Immunofluorescent analysis of (4% PFA) fixed paraffin-embedded mouse brain tissue using TIM22 antibody (14927-1-AP) at dilution of 1:200 and CoraLite®488-Conjugated Goat Anti-Rabbit IgG(H+L) (SA00013-2). Heat mediated antigen retrieval with Tris-EDTA buffer (pH 9.0). This data was developed using the same antibody clone with 14927-1-PBS in a different storage buffer formulation.