

For Research Use Only

THUMPD1 Polyclonal antibody, PBS Only

Catalog Number: 14921-1-PBS



Basic Information

Catalog Number: 14921-1-PBS	GenBank Accession Number: BC000448	Purification Method: Antigen affinity purification
Source: Rabbit	GeneID (NCBI): 55623	
Isotype: IgG	UNIPROT ID: Q9NXG2	
Immunogen Catalog Number: AG6739	Full Name: THUMP domain containing 1	
	Calculated MW: 39 kDa	
	Observed MW: 49 kDa	

Applications

Tested Applications:
WB, IHC, IF/ICC, Indirect ELISA

Species Specificity:
human, mouse, rat

Background Information

THUMPD1, a THUMP domain-containing RNA-binding protein, partners with NAT10 to mediate N4-acetylcytidine (ac4C) modification, enhancing RNA stability, export, and translation. Dysregulated THUMPD1 promotes proliferation, migration, invasion, and EMT.

Storage

Storage:
Store at -80°C.
The product is shipped with ice packs. Upon receipt, store it immediately at -80°C

Storage Buffer:
PBS only, pH7.3

For technical support and original validation data for this product please contact:

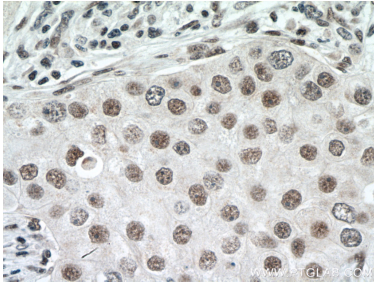
T: 4006900926

E: Proteintech-CN@ptglab.com

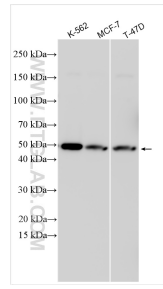
W: ptgcn.com

This product is exclusively available under Proteintech Group brand and is not available to purchase from any other manufacturer.

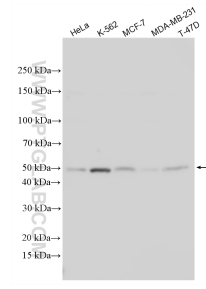
Selected Validation Data



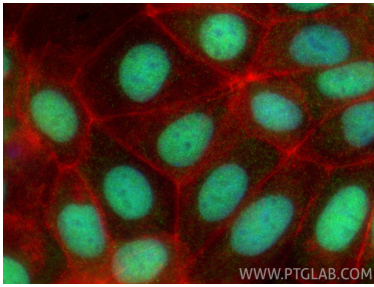
Immunohistochemical analysis of paraffin-embedded human breast cancer tissue slide using 14921-1-AP (THUMPD1 antibody) at dilution of 1:200 (under 40x lens. Heat mediated antigen retrieval with Tris-EDTA buffer (pH 9.0). This data was developed using the same antibody clone with 14921-1-PBS in a different storage buffer formulation.



Various lysates were subjected to SDS PAGE followed by western blot with 14921-1-AP (THUMPD1 antibody) at dilution of 1:10000 incubated at room temperature for 1.5 hours. This data was developed using the same antibody clone with 14921-1-PBS in a different storage buffer formulation.



Various lysates were subjected to SDS PAGE followed by western blot with 14921-1-AP (THUMPD1 antibody) at dilution of 1:30000 incubated at room temperature for 1.5 hours. This data was developed using the same antibody clone with 14921-1-PBS in a different storage buffer formulation.



Immunofluorescent analysis of (4% PFA) fixed MCF-7 cells using THUMPD1 antibody (14921-1-AP) at dilution of 1:1000 and CoraLite@488-Conjugated Goat Anti-Rabbit IgG(H+L) (SA00013-2), CL594-Phalloidin (red). This data was developed using the same antibody clone with 14921-1-PBS in a different storage buffer formulation.