

For Research Use Only

# MEPCE Polyclonal antibody

Catalog Number: 14917-1-AP

Featured Product

8 Publications



## Basic Information

**Catalog Number:**

14917-1-AP

**Size:**

850 µg/ml

**Source:**

Rabbit

**Isotype:**

IgG

**Immunogen Catalog Number:**

AG6733

**GenBank Accession Number:**

BC000556

**GeneID (NCBI):**

56257

**UNIPROT ID:**

Q7L2J0

**Full Name:**

methylphosphate capping enzyme

**Calculated MW:**

74 kDa

**Observed MW:**

74 kDa

**Purification Method:**

Antigen affinity purification

**Recommended Dilutions:**

WB 1:1000-1:4000

IP 0.5-4.0 µg for 1.0-3.0 mg of total protein lysate

IF 1:20-1:200

## Applications

**Tested Applications:**

IF/ICC, IP, WB, ELISA

**Cited Applications:**

WB, IP

**Species Specificity:**

human

**Cited Species:**

human

**Positive Controls:**

WB : MCF7 cells, MCF-7 cells

IP : MCF-7 cells,

IF : MCF-7 cells,

## Background Information

MEPCE is a component of the 7SK snRNP complex, and a S-adenosyl-L-methionine-dependent methyltransferase that adds a methylphosphate cap at the 5'-end of 7SK snRNA, which leads to its stabilization.

## Notable Publications

Author	Pubmed ID	Journal	Application
Nur Firdaus Isa	34696162	Vaccines (Basel)	WB
Ahmed S Warda	29051200	EMBO Rep	WB
Taketoshi Mizutani	24607481	FEBS Lett	WB

## Storage

**Storage:**

Store at -20°C. Stable for one year after shipment.

**Storage Buffer:**

PBS with 0.02% sodium azide and 50% glycerol pH 7.3.

Aliquoting is unnecessary for -20°C storage

For technical support and original validation data for this product please contact:

T: 4006900926

E: Proteintech-CN@ptglab.com

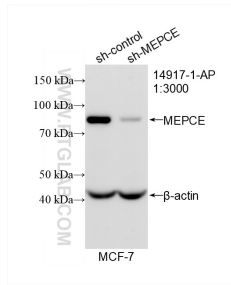
W: ptgcn.com

This product is exclusively available under Proteintech Group brand and is not available to purchase from any other manufacturer.

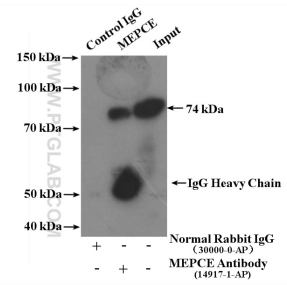
## Selected Validation Data



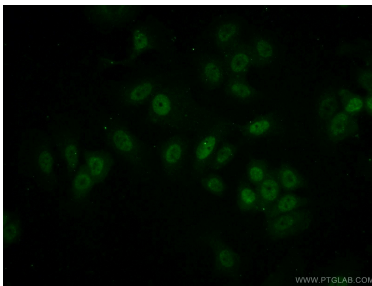
MCF7 cells were subjected to SDS PAGE followed by western blot with 14917-1-AP (MEPCE antibody) at dilution of 1:2000 incubated at room temperature for 1.5 hours.



WB result of MEPCE antibody (14917-1-AP; 1:3000; incubated at room temperature for 1.5 hours) with sh-Control and sh-MEPCE transfected MCF-7 cells.



IP result of anti-MEPCE (IP:14917-1-AP, 4ug; Detection:14917-1-AP 1:400) with MCF-7 cells lysate 3200ug.



Immunofluorescent analysis of (-20°C Ethanol) fixed MCF-7 cells using 14917-1-AP (MEPCE antibody) at dilution of 1:50 and Alexa Fluor 488-conjugated AffiniPure Goat Anti-Rabbit IgG(H+L).