

For Research Use Only

# RPS26 Polyclonal antibody, PBS Only

Catalog Number: 14909-1-PBS

Featured Product



## Basic Information

Catalog Number:

14909-1-PBS

Concentration:

1 mg/ml

Source:

Rabbit

Isotype:

IgG

Immunogen Catalog Number:

AG6706

GenBank Accession Number:

BC002604

GeneID (NCBI):

6231

UNIPROT ID:

P62854

Full Name:

ribosomal protein S26

Calculated MW:

13 kDa

Observed MW:

18-21 kDa

Purification Method:

Antigen affinity purification

## Applications

Tested Applications:

WB, IHC, IF/ICC, IP, Indirect ELISA

Species Specificity:

human, mouse, rat

## Background Information

Diamond-Blackfan anemia (DBA) is a congenital red cell aplasia that is usually diagnosed during early infancy, and strikingly, in addition to defects in red cell maturation the disorder is associated with various physical anomalies in about 40% of patients. To date, heterozygous mutations in nine RP genes have been conclusively associated with DBA, and RPS26 is one of them. There are nine mutations found in RPS26 from DBA patients.

## Storage

Storage:

Store at -80°C.

The product is shipped with ice packs. Upon receipt, store it immediately at -80°C

Storage Buffer:

PBS Only

For technical support and original validation data for this product please contact:

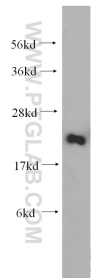
T: 4006900926

E: [Proteintech-CN@ptglab.com](mailto:Proteintech-CN@ptglab.com)

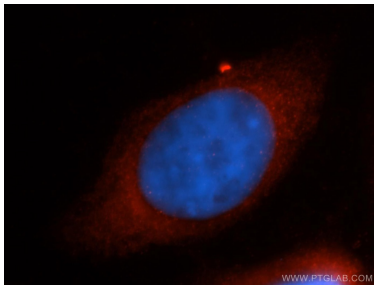
W: [ptgcn.com](http://ptgcn.com)

This product is exclusively available under Proteintech Group brand and is not available to purchase from any other manufacturer.

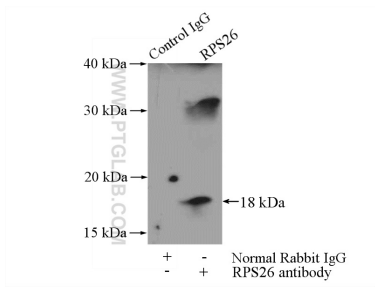
Selected Validation Data



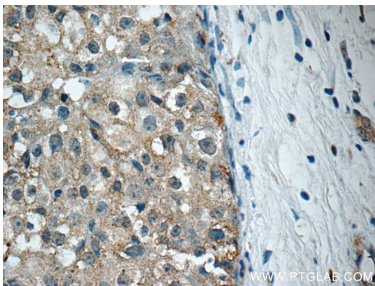
mouse ovary tissue were subjected to SDS PAGE followed by western blot with 14909-1-AP (RPS26 antibody) at dilution of 1:200 incubated at room temperature for 1.5 hours. This data was developed using the same antibody clone with 14909-1-PBS in a different storage buffer formulation.



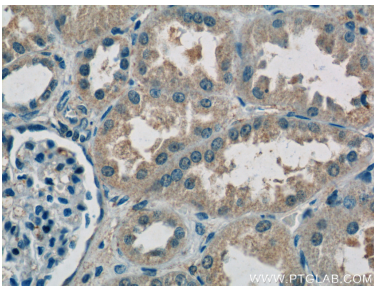
Immunofluorescent analysis of MCF-7 cells, using RPS26 antibody 14909-1-AP at 1:50 dilution and Rhodamine-labeled goat anti-rabbit IgG (red). Blue pseudocolor = DAPI (fluorescent DNA dye). This data was developed using the same antibody clone with 14909-1-PBS in a different storage buffer formulation.



IP result of anti-RPS26 (IP:14909-1-AP, 4ug; Detection:14909-1-AP 1:500) with mouse lung tissue lysate 4000ug. This data was developed using the same antibody clone with 14909-1-PBS in a different storage buffer formulation.



Immunohistochemical analysis of paraffin-embedded human breast cancer tissue slide using 14909-1-AP (RPS26 Antibody) at dilution of 1:50 (under 40x lens). This data was developed using the same antibody clone with 14909-1-PBS in a different storage buffer formulation.



Immunohistochemical analysis of paraffin-embedded human kidney tissue slide using 14909-1-AP (RPS26 Antibody) at dilution of 1:50 (under 40x lens). This data was developed using the same antibody clone with 14909-1-PBS in a different storage buffer formulation.