

HKR1 Polyclonal antibody

Catalog Number: 14902-1-AP

Basic Information

Catalog Number:

14902-1-AP

Size:

500 µg/ml

Source:

Rabbit

Isotype:

IgG

Immunogen Catalog Number:

AG6694

GenBank Accession Number:

BC053845

GeneID (NCBI):

284459

UNIPROT ID:

P10072

Full Name:

GLI-Kruppel family member HKR1

Calculated MW:

73 kDa, 75 kDa

Observed MW:

70-75 kDa

Purification Method:

Antigen affinity purification

Recommended Dilutions:

WB 1:200-1:1000

Applications

Tested Applications:

WB, ELISA

Species Specificity:

human

Positive Controls:

WB : COLO 320 cells, HEK-293 cells, HeLa cells

Background Information

HKR1, also named as ZNF875, belongs to the krueppel C2H2-type zinc-finger protein family. HKR1 is a modular protein that comprises a photosensory rhodopsin, a histidine kinase, a response regulator and a putative guanylyl cyclase domain. HKR1 is related to the protonation state of the Schiff base function that provides the linkage of the retinal chromophore with a Lys side chain of the protein (PMID: 25836735). HKR1 has 2 isoforms with the molecular mass of 73-75 kDa.

Storage

Storage:

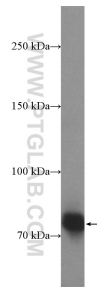
Store at -20°C. Stable for one year after shipment.

Storage Buffer:

PBS with 0.02% sodium azide and 50% glycerol pH 7.3.

Aliquoting is unnecessary for -20°C storage

Selected Validation Data



COLO 320 cells were subjected to SDS PAGE followed by western blot with 14902-1-AP (HKR1 Antibody) at dilution of 1:300 incubated at 4 degree celsius over night.