

For Research Use Only

# RBX1 Polyclonal antibody

Catalog Number: 14895-1-AP **10 Publications**



## Basic Information

<b>Catalog Number:</b> 14895-1-AP	<b>GenBank Accession Number:</b> BC001466	<b>Purification Method:</b> Antigen affinity purification
<b>Size:</b> 400 µg/ml	<b>GeneID (NCBI):</b> 9978	<b>Recommended Dilutions:</b> WB 1:500-1:1000 IP 0.5-4.0 µg for 1.0-3.0 mg of total protein lysate IHC 1:50-1:500
<b>Source:</b> Rabbit	<b>UNIPROT ID:</b> P62877	
<b>Isotype:</b> IgG	<b>Full Name:</b> ring-box 1	
<b>Immunogen Catalog Number:</b> AG6685	<b>Calculated MW:</b> 12 kDa	
	<b>Observed MW:</b> 15 kDa	

## Applications

<b>Tested Applications:</b> IHC, IP, WB, ELISA	<b>Positive Controls:</b> WB : HeLa cells, Jurkat cells IP : HeLa cells, IHC : human heart tissue,
<b>Cited Applications:</b> WB, IP, IF	
<b>Species Specificity:</b> human	
<b>Cited Species:</b> human, rat, mouse, Eriocheir sinensis	
<b>Note-IHC: suggested antigen retrieval with TE buffer pH 9.0; (*) Alternatively, antigen retrieval may be performed with citrate buffer pH 6.0</b>	

## Background Information

RBX1(RING-box protein 1) is also named as RNF75, ROC1 and is a requisite component of the multi- subunit SCF family E3s36-40.It mediates the ubiquitination and subsequent proteasomal degradation of target proteins, including proteins involved in cell cycle progression, signal transduction, transcription and transcription-coupled nucleotide excision repair.

## Notable Publications

Author	Pubmed ID	Journal	Application
Chenjia Guo	33227565	Neurobiol Aging	WB
Pingzhao Zhang	34743205	Cell Death Differ	WB
Jia-Shun Zhang	29775751	Gene	WB,IF

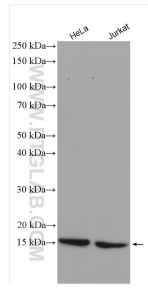
## Storage

**Storage:**  
Store at -20°C. Stable for one year after shipment.  
**Storage Buffer:**  
PBS with 0.02% sodium azide and 50% glycerol pH 7.3.  
Aliquoting is unnecessary for -20°C storage

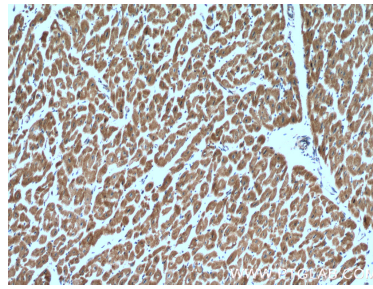
For technical support and original validation data for this product please contact:  
T: 4006900926 E: Proteintech-CN@ptglab.com W: ptgcn.com

This product is exclusively available under Proteintech Group brand and is not available to purchase from any other manufacturer.

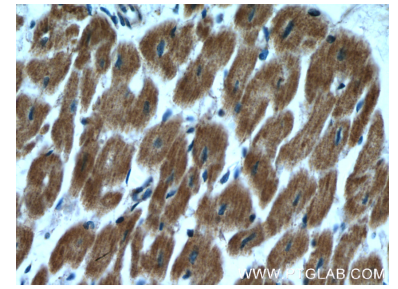
## Selected Validation Data



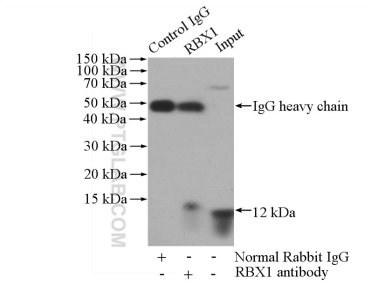
Various lysates were subjected to SDS PAGE followed by western blot with 14895-1-AP (RBX1 antibody) at dilution of 1:600 incubated at room temperature for 1.5 hours.



Immunohistochemical analysis of paraffin-embedded human heart tissue slide using 14895-1-AP (RBX1 antibody) at dilution of 1:200 (under 10x lens).



Immunohistochemical analysis of paraffin-embedded human heart tissue slide using 14895-1-AP (RBX1 antibody) at dilution of 1:200 (under 40x lens).



IP result of anti-RBX1 (IP:14895-1-AP, 4ug; Detection:14895-1-AP 1:500) with HeLa cells lysate 1520ug.