

For Research Use Only

# PCK1/2 Polyclonal antibody, PBS Only

Catalog Number:14892-1-PBS



## Basic Information

Catalog Number:

14892-1-PBS

Source:

Rabbit

Isotype:

IgG

Immunogen Catalog Number:

AG6681

GenBank Accession Number:

BC001454

GeneID (NCBI):

5106

UNIPROT ID:

Q16822

Full Name:

phosphoenolpyruvate carboxykinase  
2 (mitochondrial)

Calculated MW:

71 kDa

Observed MW:

66-71 kDa

Purification Method:

Antigen affinity purification

## Applications

Tested Applications:

WB, IHC, IF/ICC, FC (Intra), ELISA

Species Specificity:

human, mouse, rat

## Background Information

PCK2(phosphoenolpyruvate carboxykinase [GTP], mitochondrial) is also named as PEPCK2, PEPCK-M and belongs to the phosphoenolpyruvate carboxykinase [GTP] family. It catalyses the irreversible conversion of oxaloacetate to phosphoenolpyruvate, an important initial step in hepatic gluconeogenesis. Defects in PCK2 are the cause of mitochondrial phosphoenolpyruvate carboxykinase deficiency (M-PEPCKD). It has 2 isoforms produced by alternative splicing with the molecular weight of 71 kDa and 48 kDa. This antibody has weak cross-reactivity with PCK1 protein due to high sequence homology between PCK1 and PCK2.

## Storage

Storage:

Store at -80°C.

**The product is shipped with ice packs. Upon receipt, store it immediately at -80°C**

Storage Buffer:

PBS only, pH7.3

For technical support and original validation data for this product please contact:

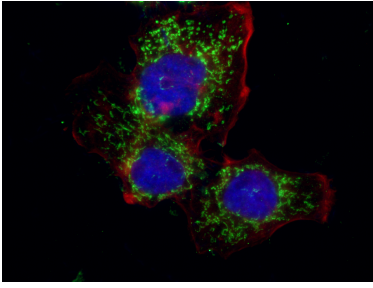
T: 4006900926

E: [Proteintech-CN@ptglab.com](mailto:Proteintech-CN@ptglab.com)

W: [ptgcn.com](http://ptgcn.com)

**This product is exclusively available under Proteintech Group brand and is not available to purchase from any other manufacturer.**

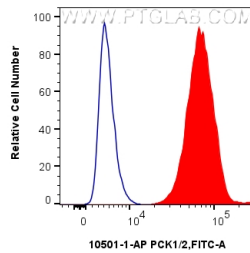
## Selected Validation Data



Immunofluorescent analysis of (4% PFA) fixed MCF-7 cells using 14892-1-AP (PCK1/2 antibody), at dilution of 1:200 and CoraLite®488-Conjugated AffiniPure Goat Anti-Rabbit IgG(H+L). This data was developed using the same antibody clone with 14892-1-PBS in a different storage buffer formulation.



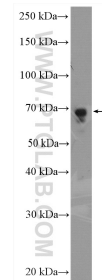
Immunohistochemical analysis of paraffin-embedded human breast cancer tissue slide using 14892-1-AP (PCK2 antibody) at dilution of 1:200 (under 40x lens. Heat mediated antigen retrieval with Tris-EDTA buffer (pH 9.0).



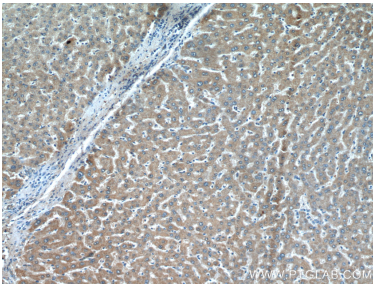
$1 \times 10^6$  HepG2 cells were intracellularly stained with 0.25 ug PCK1/2 Polyclonal antibody (14892-1-AP) and CoraLite®488-Conjugated Goat Anti-Rabbit IgG(H+L) (SA00013-2)(red), or 0.25 ug Isotype Control (blue). Cells were fixed and permeabilized with Intracellular Flow Cytometry Fixation & Permeabilization Buffer Kit (PF00019). This data was developed using the same antibody clone with 14892-1-PBS in a different storage buffer formulation.



Immunohistochemical analysis of paraffin-embedded human breast cancer tissue slide using 14892-1-AP (PCK2 antibody) at dilution of 1:200 (under 10x lens. Heat mediated antigen retrieval with Tris-EDTA buffer (pH 9.0).



mouse liver tissue were subjected to SDS PAGE followed by western blot with 14892-1-AP (PCK1/2 antibody) at dilution of 1:600 incubated at room temperature for 1.5 hours. This data was developed using the same antibody clone with 14892-1-PBS in a different storage buffer formulation.



Immunohistochemical analysis of paraffin-embedded human liver cancer tissue slide using 14892-1-AP (PCK1/2 antibody) at dilution of 1:200 (under 10x lens). This data was developed using the same antibody clone with 14892-1-PBS in a different storage buffer formulation.