

For Research Use Only

# PCK1/2 Polyclonal antibody

Catalog Number: 14892-1-AP

33 Publications



## Basic Information

Catalog Number:

14892-1-AP

Size:

300 ug/ml

Source:

Rabbit

Isotype:

IgG

Immunogen Catalog Number:

AG6681

GenBank Accession Number:

BC001454

GeneID (NCBI):

5106

UNIPROT ID:

Q16822

Full Name:

phosphoenolpyruvate carboxykinase  
2 (mitochondrial)

Calculated MW:

71 kDa

Observed MW:

66-71 kDa

Purification Method:

Antigen affinity purification

Recommended Dilutions:

WB 1:500-1:1000

IHC 1:100-1:1000

IF/ICC 1:50-1:500

## Applications

Tested Applications:

WB, IHC, IF/ICC, ELISA

Cited Applications:

WB, IHC, IF, CoIP

Species Specificity:

human, mouse, rat

Cited Species:

human, mouse, rat, pig

**Note-IHC: suggested antigen retrieval with  
TE buffer pH 9.0; (\*) Alternatively, antigen  
retrieval may be performed with citrate  
buffer pH 6.0**

Positive Controls:

WB : mouse brain tissue, rat brain tissue, mouse liver  
tissue

IHC : human breast cancer tissue, mouse kidney tissue,  
human liver cancer tissue

IF/ICC : MCF-7 cells,

## Background Information

PCK2(phosphoenolpyruvate carboxykinase [GTP], mitochondrial) is also named as PEPCK2, PEPCK-M and belongs to the phosphoenolpyruvate carboxykinase [GTP] family. It catalyses the irreversible conversion of oxaloacetate to phosphoenolpyruvate, an important initial step in hepatic gluconeogenesis. Defects in PCK2 are the cause of mitochondrial phosphoenolpyruvate carboxykinase deficiency (M-PEPCKD). It has 2 isoforms produced by alternative splicing with the molecular weight of 71 kDa and 48 kDa. This antibody has weak cross-reactivity with PCK1 protein due to high sequence homology between PCK1 and PCK2.

## Notable Publications

Author	Pubmed ID	Journal	Application
Teresa W-M Fan	36150727	J Immunol	
Shuyue Wang	31526292	Am J Physiol Endocrinol Metab	WB
Yiru Wang	36058294	Exp Cell Res	WB

## Storage

Storage:

Store at -20°C. Stable for one year after shipment.

Storage Buffer:

PBS with 0.02% sodium azide and 50% glycerol pH 7.3.

Aliquoting is unnecessary for -20°C storage

For technical support and original validation data for this product please contact:

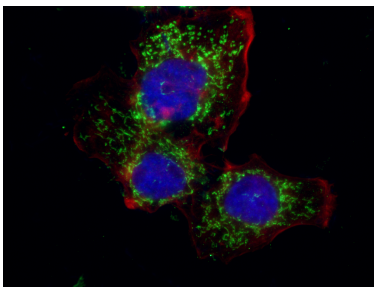
T: 4006900926

E: Proteintech-CN@ptglab.com

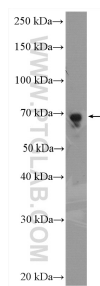
W: ptgcn.com

**This product is exclusively available under Proteintech  
Group brand and is not available to purchase from any  
other manufacturer.**

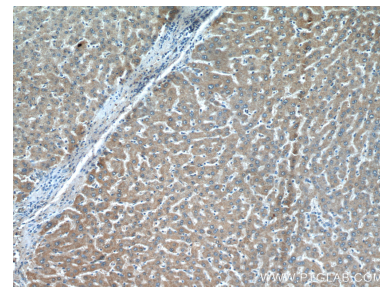
## Selected Validation Data



Immunofluorescent analysis of (4% PFA) fixed MCF-7 cells using 14892-1-AP (PCK1/2 antibody), at dilution of 1:200 and CoraLite® 488-Conjugated AffiniPure Goat Anti-Rabbit IgG(H+L).



mouse liver tissue were subjected to SDS PAGE followed by western blot with 14892-1-AP (PCK1/2 antibody) at dilution of 1:600 incubated at room temperature for 1.5 hours.



Immunohistochemical analysis of paraffin-embedded human liver cancer tissue slide using 14892-1-AP (PCK1/2 antibody) at dilution of 1:200 (under 10x lens).