

For Research Use Only

Aldolase C Polyclonal antibody

Catalog Number: 14884-1-AP

Featured Product

26 Publications



Basic Information

Catalog Number:

14884-1-AP

Source:

Rabbit

Isotype:

IgG

Immunogen Catalog Number:

AG6659

GenBank Accession Number:

BC003613

GeneID (NCBI):

230

UNIPROT ID:

P09972

Full Name:

aldolase C, fructose-bisphosphate

Calculated MW:

39 kDa

Observed MW:

39 kDa

Purification Method:

Antigen affinity purification

Recommended Dilutions:

IHC: 1:50-1:500

IF-P: 1:50-1:500

Applications

Tested Applications:

IHC, IF-P, ELISA

Cited Applications:

WB, IHC, IF, IP, ELISA

Species Specificity:

human, mouse, rat

Cited Species:

human, mouse, chicken

Note-IHC: suggested antigen retrieval with TE buffer pH 9.0; (*) Alternatively, antigen retrieval may be performed with citrate buffer pH 6.0

Positive Controls:

IHC: mouse brain tissue,

IF-P: mouse brain tissue,

Background Information

Fructose-bisphosphate aldolase C (ALDOC) reversibly cleaves FBP and F1-P to glyceraldehyde 3-phosphate and dihydroxyacetone phosphate and is strongly expressed in mammalian brain together with ALDOA and is also present in the heart and spleen of some species (PMID:9363598). It is involved in glycolysis as an important enzyme. Phospholipase D2 and inositol 1,4,5-triphosphate interact with ALDOC in signal transduction. Meanwhile, the protein expression of ALDOC has been reported to be regulated in brain tumor, hepatomas, and lung cancer (PMID:21548097). 14884-1-AP can recognize Aldolase A and Aldolase C.

Notable Publications

Author	Pubmed ID	Journal	Application
Scott P Allen	31647549	Brain	WB
Minzhe Zhu	33059001	Biochim Biophys Acta Mol Basis Dis	WB
J J David Ho	32472050	Nat Commun	WB

Storage

Storage:

Store at -20°C. Stable for one year after shipment.

Storage Buffer:

PBS with 0.02% sodium azide and 50% glycerol, pH7.3

Aliquoting is unnecessary for -20°C storage

For technical support and original validation data for this product please contact:

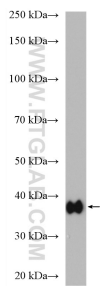
T: 4006900926

E: Proteintech-CN@ptglab.com

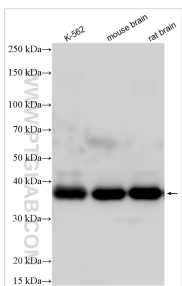
W: ptgcn.com

This product is exclusively available under Proteintech Group brand and is not available to purchase from any other manufacturer.

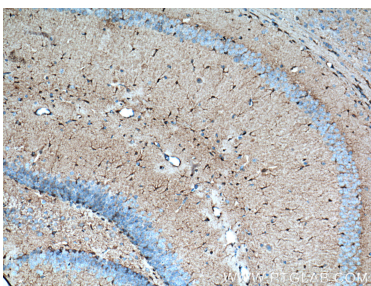
Selected Validation Data



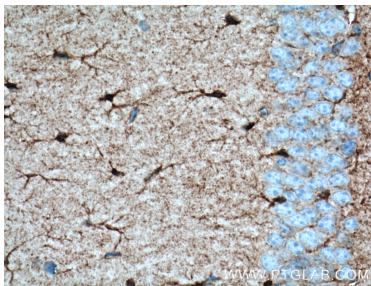
mouse cerebellum tissue were subjected to SDS PAGE followed by western blot with 14884-1-AP (Aldolase C antibody) at dilution of 1:10000 incubated at room temperature for 1.5 hours.



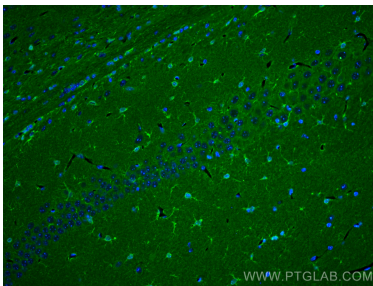
Various lysates were subjected to SDS PAGE followed by western blot with 14884-1-AP (Aldolase C antibody) at dilution of 1:30000 incubated at room temperature for 1.5 hours.



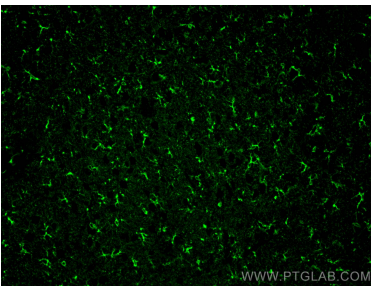
Immunohistochemical analysis of paraffin-embedded mouse brain tissue slide using 14884-1-AP (Aldolase C antibody at dilution of 1:200 (under 10x lens). Heat mediated antigen retrieval with Tris-EDTA buffer (pH 9.0).



Immunohistochemical analysis of paraffin-embedded mouse brain tissue slide using 14884-1-AP (Aldolase C antibody at dilution of 1:200 (under 40x lens). Heat mediated antigen retrieval with Tris-EDTA buffer (pH 9.0).



Immunofluorescent analysis of (4% PFA) fixed mouse brain tissue using Aldolase C antibody (14884-1-AP) at dilution of 1:200 and CoraLite® 488-Conjugated AffiniPure Goat Anti-Rabbit IgG(H+L).



Immunofluorescent analysis of (4% PFA) fixed mouse brain tissue using Aldolase C antibody (14884-1-AP) at dilution of 1:400 and CoraLite® 488-Conjugated AffiniPure Goat Anti-Rabbit IgG(H+L).