

For Research Use Only

# KLHL12 Polyclonal antibody

Catalog Number: 14883-1-AP

Featured Product

2 Publications



## Basic Information

### Catalog Number:

14883-1-AP

### Size:

600 µg/ml

### Source:

Rabbit

### Isotype:

IgG

### Immunogen Catalog Number:

AG6658

### GenBank Accession Number:

BC004175

### GeneID (NCBI):

59349

### UNIPROT ID:

Q53G59

### Full Name:

kelch-like 12 (Drosophila)

### Calculated MW:

63 kDa

### Observed MW:

53-56 kDa, 63-67 kDa

### Purification Method:

Antigen affinity purification

### Recommended Dilutions:

WB 1:500-1:2000

IHC 1:20-1:200

IF/ICC 1:20-1:200

## Applications

### Tested Applications:

WB, IHC, IF/ICC, ELISA

### Cited Applications:

WB, IF

### Species Specificity:

human, mouse, rat

### Cited Species:

human

**Note-IHC: suggested antigen retrieval with TE buffer pH 9.0; (\*) Alternatively, antigen retrieval may be performed with citrate buffer pH 6.0**

### Positive Controls:

WB : PC-3 cells,

IHC : human testis tissue,

IF/ICC : PC-3 cells,

## Background Information

## Notable Publications

Author	Pubmed ID	Journal	Application
David Akopian	35120648	Mol Cell	WB, IF
Chutikarn Butkinaree	24334870	Arterioscler Thromb Vasc Biol	WB, IF

## Storage

### Storage:

Store at -20°C. Stable for one year after shipment.

### Storage Buffer:

PBS with 0.02% sodium azide and 50% glycerol pH 7.3.

Aliquoting is unnecessary for -20°C storage

For technical support and original validation data for this product please contact:

T: 4006900926

E: [Proteintech-CN@ptglab.com](mailto:Proteintech-CN@ptglab.com)

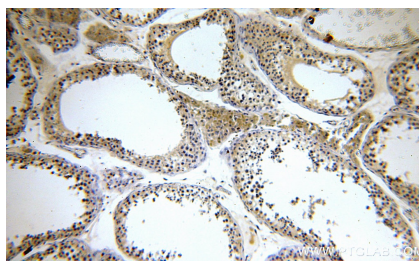
W: [ptgcn.com](http://ptgcn.com)

This product is exclusively available under Proteintech Group brand and is not available to purchase from any other manufacturer.

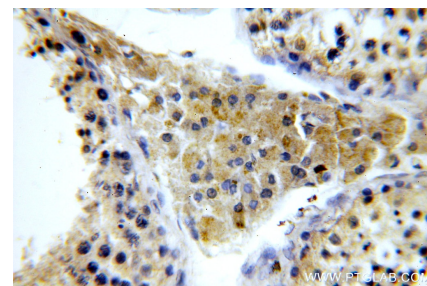
## Selected Validation Data



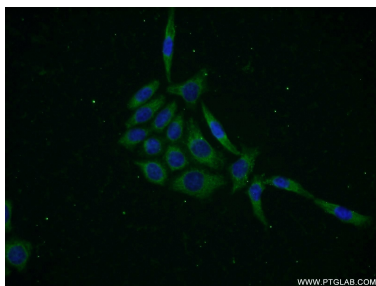
PC-3 cells were subjected to SDS PAGE followed by western blot with 14883-1-AP (KLHL12 antibody) at dilution of 1:1000 incubated at room temperature for 1.5 hours.



Immunohistochemical analysis of paraffin-embedded human testis using 14883-1-AP (KLHL12 antibody) at dilution of 1:100 (under 10x lens).



Immunohistochemical analysis of paraffin-embedded human testis using 14883-1-AP (KLHL12 antibody) at dilution of 1:100 (under 40x lens).



Immunofluorescent analysis of PC-3 cells using 14883-1-AP (KLHL12 antibody) at dilution of 1:50 and Alexa Fluor 488-conjugated AffiniPure Goat Anti-Rabbit IgG(H+L).