

For Research Use Only

SPCS2 Polyclonal antibody

Catalog Number: 14872-1-AP

Featured Product

2 Publications



Basic Information

Catalog Number:

14872-1-AP

Size:

700 ug/ml

Source:

Rabbit

Isotype:

IgG

Immunogen Catalog Number:

AG6640

GenBank Accession Number:

BC064957

GeneID (NCBI):

9789

UNIPROT ID:

Q15005

Full Name:

signal peptidase complex subunit 2 homolog (S. cerevisiae)

Calculated MW:

25 kDa

Observed MW:

25 kDa

Purification Method:

Antigen affinity purification

Recommended Dilutions:

WB 1:1000-1:4000

IP 0.5-4.0 ug for 1.0-3.0 mg of total protein lysate

IHC 1:200-1:800

Applications

Tested Applications:

WB, IHC, IP, ELISA

Cited Applications:

WB

Species Specificity:

human, mouse, rat

Cited Species:

human

Note-IHC: suggested antigen retrieval with TE buffer pH 9.0; (*) Alternatively, antigen retrieval may be performed with citrate buffer pH 6.0

Positive Controls:

WB : HeLa cells, human colon tissue, mouse stomach tissue, rat colon tissue, mouse spleen tissue, mouse colon tissue, Jurkat cells

IP : HeLa cells, mouse colon tissue

IHC : human skin cancer tissue, human stomach cancer tissue

Background Information

Signal peptidase complex subunit 2 (SPCS2) is multi-pass membrane protein as a component of the microsomal signal peptidase complex, which function to remove signal peptides from nascent proteins before translocation into the endoplasmic reticulum lumen. This protein was evidenced as a 25 kDa protein with function not well known.

Notable Publications

Author	Pubmed ID	Journal	Application
Nicolas Bloemeke	36314723	EMBO J	WB
Rong Zhang	27383988	Nature	WB

Storage

Storage:

Store at -20°C. Stable for one year after shipment.

Storage Buffer:

PBS with 0.02% sodium azide and 50% glycerol pH 7.3.

Aliquoting is unnecessary for -20°C storage

For technical support and original validation data for this product please contact:

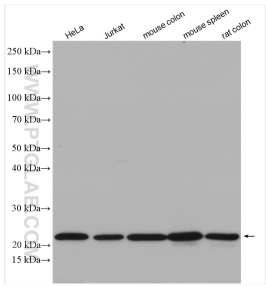
T: 4006900926

E: Proteintech-CN@ptglab.com

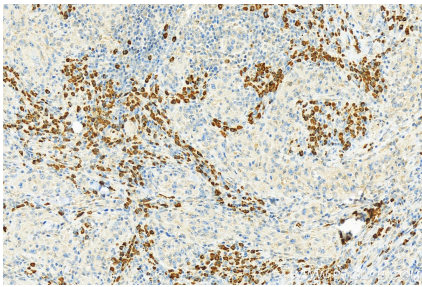
W: ptgcn.com

This product is exclusively available under Proteintech Group brand and is not available to purchase from any other manufacturer.

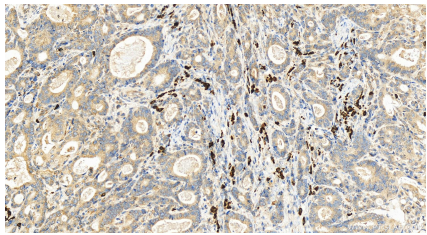
Selected Validation Data



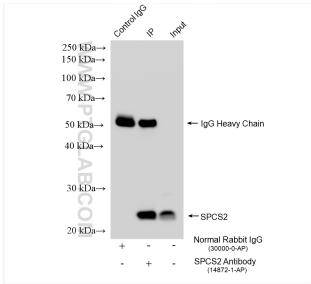
Various lysates were subjected to SDS PAGE followed by western blot with 14872-1-AP (SPCS2 antibody) at dilution of 1:2000 incubated at room temperature for 1.5 hours.



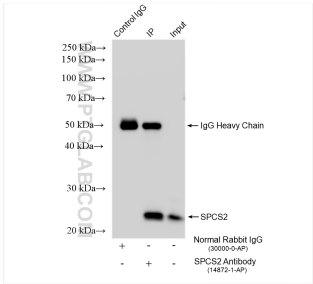
Immunohistochemical analysis of paraffin-embedded skin cancer slide using 14872-1-AP (SPCS2 antibody) at dilution of 1:400 (under 20x lens). Heat mediated antigen retrieval with Tris-EDTA buffer (pH 9.0).



Immunohistochemical analysis of paraffin-embedded human stomach cancer tissue slide using 14872-1-AP (SPCS2 antibody) at dilution of 1:200 (under 20x lens). Heat mediated antigen retrieval with Tris-EDTA buffer (pH 9.0).



IP result of anti-SPCS2 (IP:14872-1-AP, 4ug; Detection:14872-1-AP 1:2000) with HeLa cells lysate 1200 ug.



IP result of anti-SPCS2 (IP:14872-1-AP, 4ug; Detection:14872-1-AP 1:2000) with mouse colon tissue lysate 800 ug.