

For Research Use Only

PSMB8 Polyclonal antibody

Catalog Number: 14859-1-AP

Featured Product

11 Publications



Basic Information

Catalog Number:

14859-1-AP

Concentration:

600 ug/ml

Source:

Rabbit

Isotype:

IgG

Immunogen Catalog Number:

AG6660

GenBank Accession Number:

BC001114

GeneID (NCBI):

5696

UNIPROT ID:

P28062

Full Name:

proteasome (prosome, macropain)
subunit, beta type, 8 (large
multifunctional peptidase 7)

Calculated MW:

30 kDa

Observed MW:

23 kDa

Purification Method:

Antigen affinity purification

Recommended Dilutions:

WB 1:5000-1:50000

IP 0.5-4.0 ug for 1.0-3.0 mg of total
protein lysate

IHC 1:50-1:500

IF/ICC 1:200-1:800

Applications

Tested Applications:

WB, IHC, IF/ICC, IP, ELISA

Cited Applications:

WB, IHC, IF

Species Specificity:

human, mouse

Cited Species:

human, mouse

Positive Controls:

WB: Jurkat cells, mouse kidney tissue, human kidney
tissue

IP: Raji cells,

IHC: mouse spleen tissue,

IF/ICC: HepG2 cells,

**Note-IHC: suggested antigen retrieval with
TE buffer pH 9.0; (*) Alternatively, antigen
retrieval may be performed with citrate
buffer pH 6.0**

Background Information

PSMB8 (Proteasome subunit beta type-8) is also named as LMP7, PSMB5i, RING10, Y2 and belongs to the peptidase T1B family. The gene encodes the chymotrypsin-like catalytic subunit of the immunoproteasome (PMID: 19525961). PSMB8 has a role in controlling pathogenic immune responses and may be a target in autoimmune disorders. Its prosequence is not essential for incorporation of PSMB8 into the maturing proteasome, but it increased the efficiency of PSMB8 incorporation and proteasome maturation (PMID: 10926487). The pro-PSMB8 is a 276aa protein with the molecular mass of 30 kDa, and the mature form is about 23kDa due to the 72aa propeptide cleaved. Defects in PSMB8 are the cause of Nakajo syndrome (NKJO).

Notable Publications

Author	Pubmed ID	Journal	Application
Xinlong Fan	31559672	J Cell Mol Med	WB
Hiroyuki Kondo	31915251	J Biol Chem	WB, IHC
Yuwei Zhang	35219165	Int Immunopharmacol	

Storage

Storage:

Store at -20°C. Stable for one year after shipment.

Storage Buffer:

PBS with 0.02% sodium azide and 50% glycerol pH 7.3.

Aliquoting is unnecessary for -20°C storage

For technical support and original validation data for this product please contact:

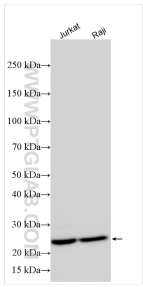
T: 4006900926

E: Proteintech-CN@ptglab.com

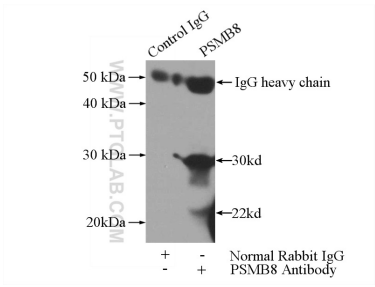
W: ptgcn.com

This product is exclusively available under Proteintech Group brand and is not available to purchase from any other manufacturer.

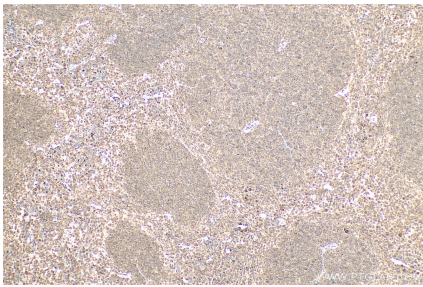
Selected Validation Data



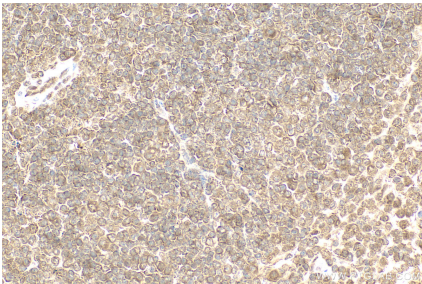
Various lysates were subjected to SDS PAGE followed by western blot with 14859-1-AP (PSMB8 antibody) at dilution of 1:20000 incubated at room temperature for 1.5 hours.



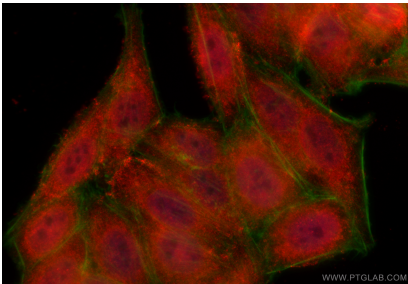
IP result of anti-PSMB8 (IP:14859-1-AP, 3ug; Detection:14859-1-AP 1:1000) with Raji cells lysate 2800ug.



Immunohistochemical analysis of paraffin-embedded mouse spleen tissue slide using 14859-1-AP (PSMB8 antibody) at dilution of 1:200 (under 10x lens). Heat mediated antigen retrieval with Tris-EDTA buffer (pH 9.0).



Immunohistochemical analysis of paraffin-embedded mouse spleen tissue slide using 14859-1-AP (PSMB8 antibody) at dilution of 1:200 (under 40x lens). Heat mediated antigen retrieval with Tris-EDTA buffer (pH 9.0).



Immunofluorescent analysis of (4% PFA) fixed HepG2 cells using PSMB8 antibody (14859-1-AP) at dilution of 1:400 and CoraLite®594-Conjugated Goat Anti-Rabbit IgG(H+L) (SA00013-4), CL488-Phalloidin (green).